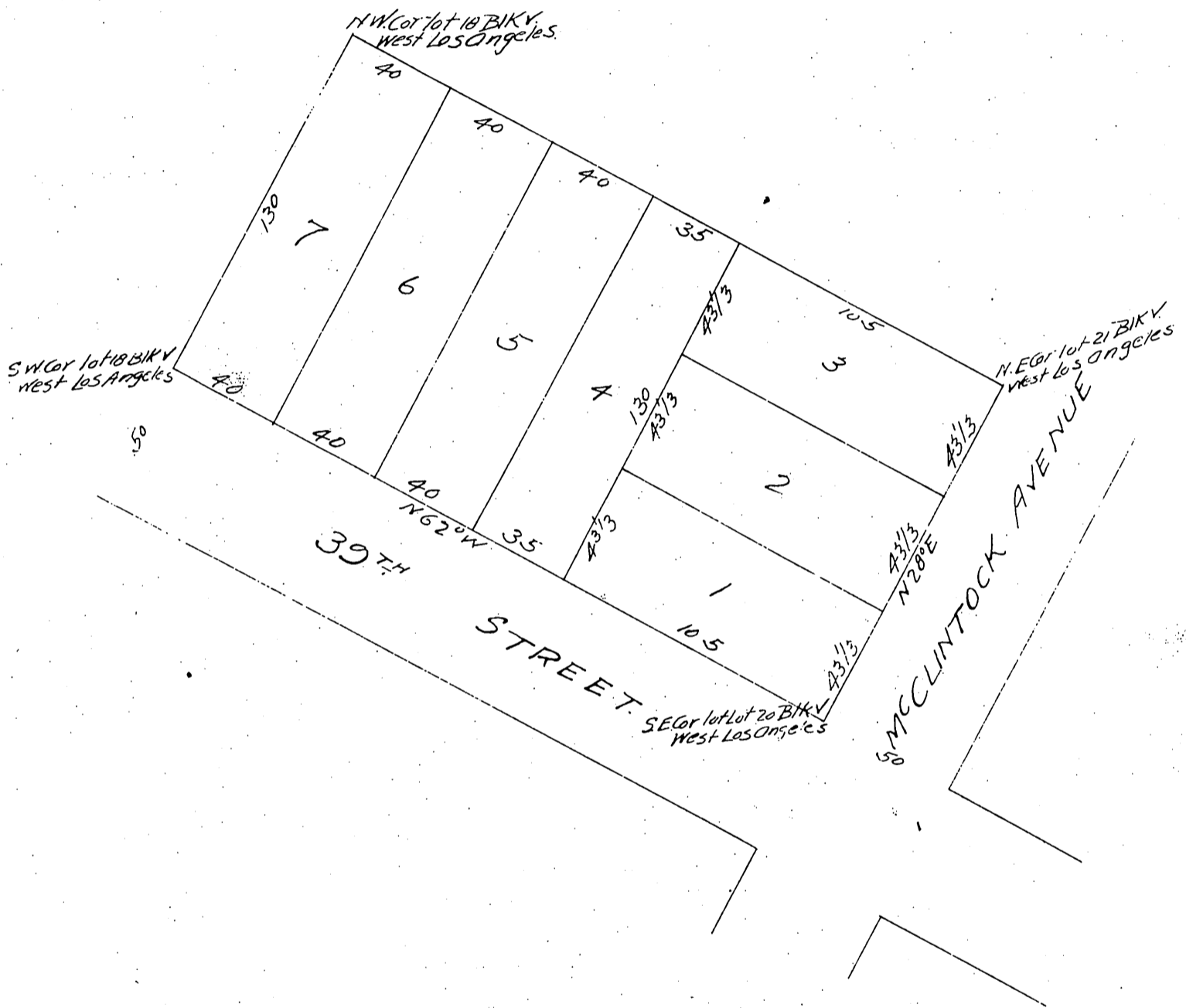


Map of
 Ewing's Replat of a part of
 Block V. West Los Angeles
 as per map recorded in Book 29 Page 19
 Miscellaneous Records
 Los Angeles County California



(Corrected Plat)

A full, true and correct copy of the original.
 (Scale 50 ft to one inch)
 Recorded, Apr 5, 1897 at 16 min past 11 o'clock
 at request of T S Ewing

EC Hodgman County Recorder
 By ET Wright Co Surveyor