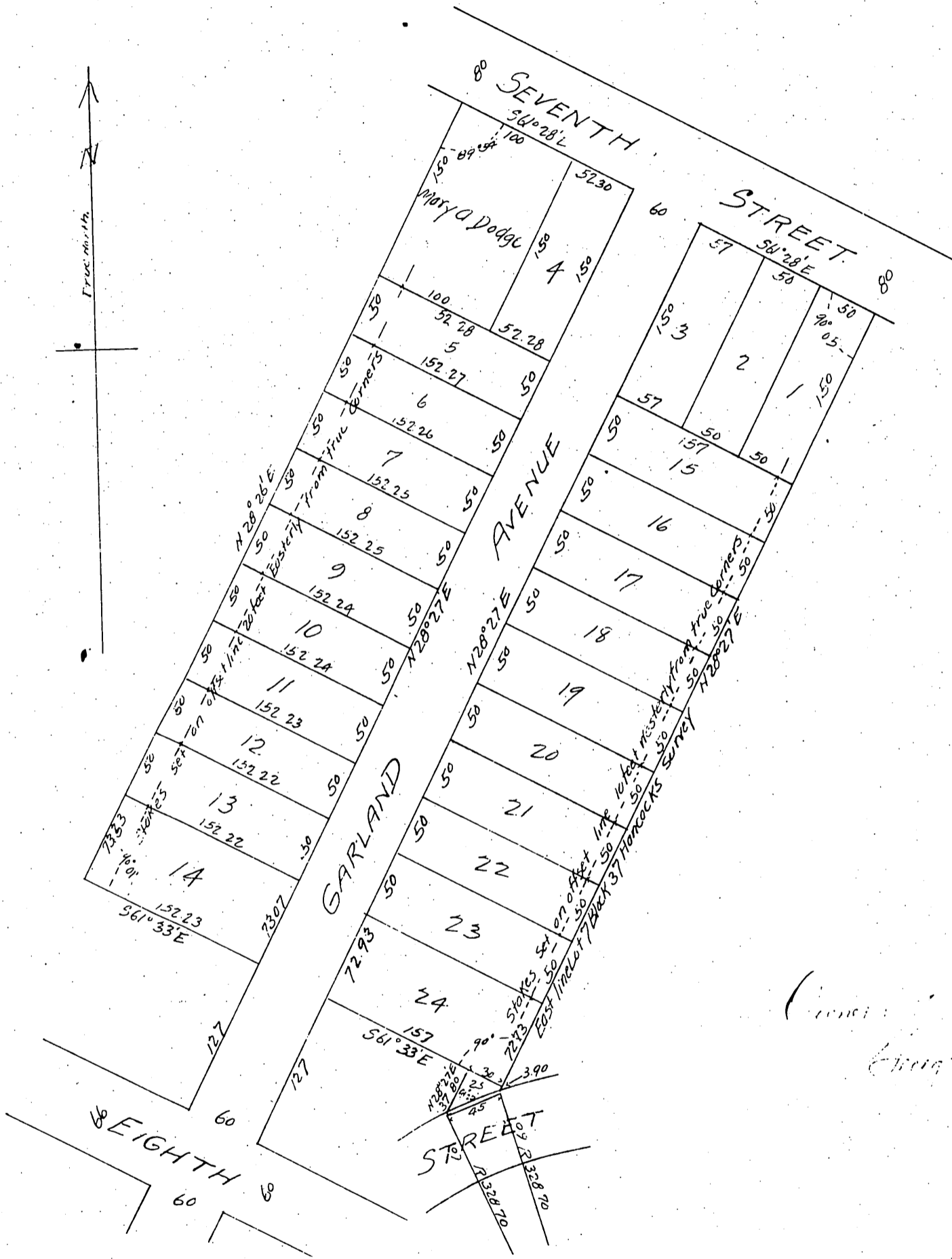


Map of the Garland Tract

being a subdivision of a portion of Lot 7, Block 37, Harcocks Survey in the City of Los Angeles, County of Los Angeles State of California.

Surveyed April 1897, by V.J. Rowan Licensed Surveyor True Courses Var 14° 30' East.

All distances in feet. Scale 50 feet to one inch.



(unclear)
Eugene A. Rowan

A full, true and correct copy of the original,
(Scale reduced to 100ft = 1 inch)
Recorded April 9, 1897 at 22 min past 2 P.M.
at request of G.D. Rowan.

EC. Hodgman County Recorder
BY ET Wright Co. Surveyor.