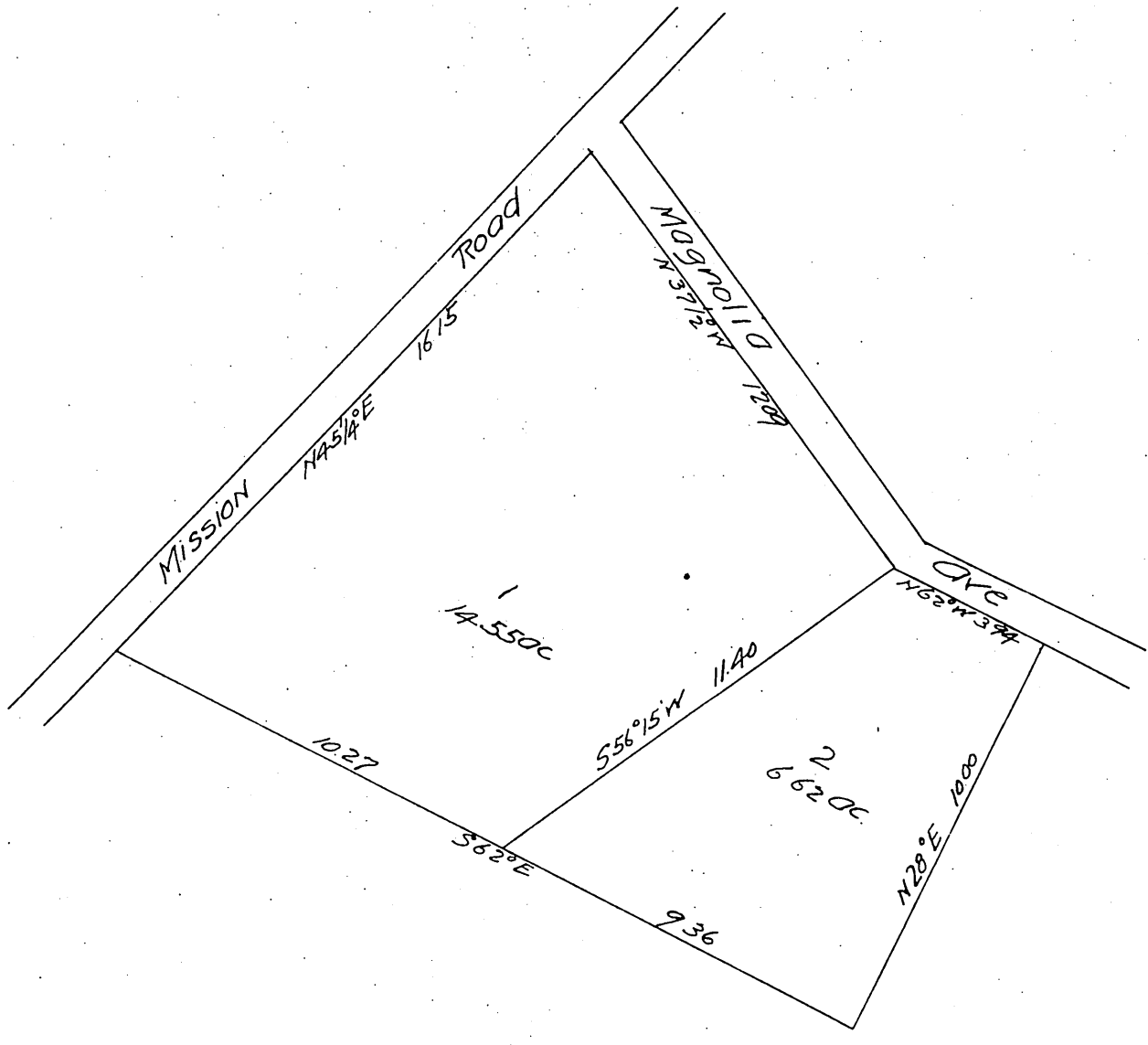


Map of  
 Lots 1 & 2 of the  
 Orange Slope Tract  
 after vacation of all streets in  
 Goss Tract  
 by Ordinance No 1310 (N5) of the Council of the  
 City of Los Angeles  
 Scale 4 chs = 1 in.  
 J. O. Marsh, Draftsman.

0090  
 90



Corrected by Marsh

A full, true and correct copy of the original.  
 Recorded Apr 15, 1897 at 1 min past 3 PM  
 at request of City Brick Co

E. C. Hodgman County Recorder  
 By E. T. Wright Co. Surveyor.