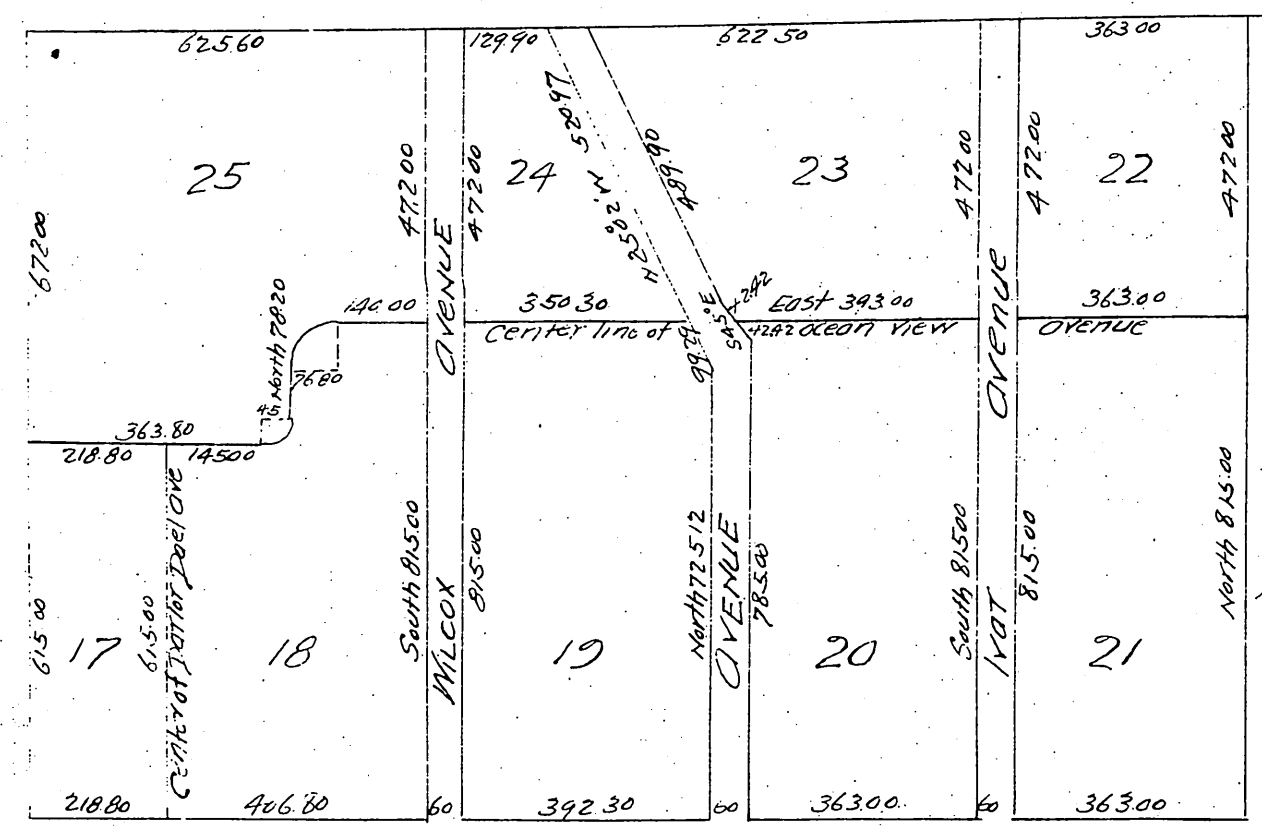


# Map of part of Hollywood (MR 28-5960)

Showing blocks after vacation  
of certain streets and Alleys

May 3, 1897  
300ft to 1 inch



NOTE  
This map is traced and courses and distances taken from map recorded in Book 28, pages 596; Miscellaneous Records and is simply intended to comply with order of vacation attached. No lots are vacated by this map but remain as shown in M.R. 28-59 except that streets vacated revert to lots fronting thereon.

NOTE  
Amended map recorded in Book 43, Page 68, Miscellaneous Records shows Blocks 1-2, 15-16 after vacation of Nat Avenue. Some map shows land after vacation of Salem Ave from Milcox Ave to west line of Hollywood as per order in supervisors Road Book 4, Page 23.

