

# Jeffers Tract

Showing

Lots A, B, C, D, E.

owned by

D.W. Jeffers

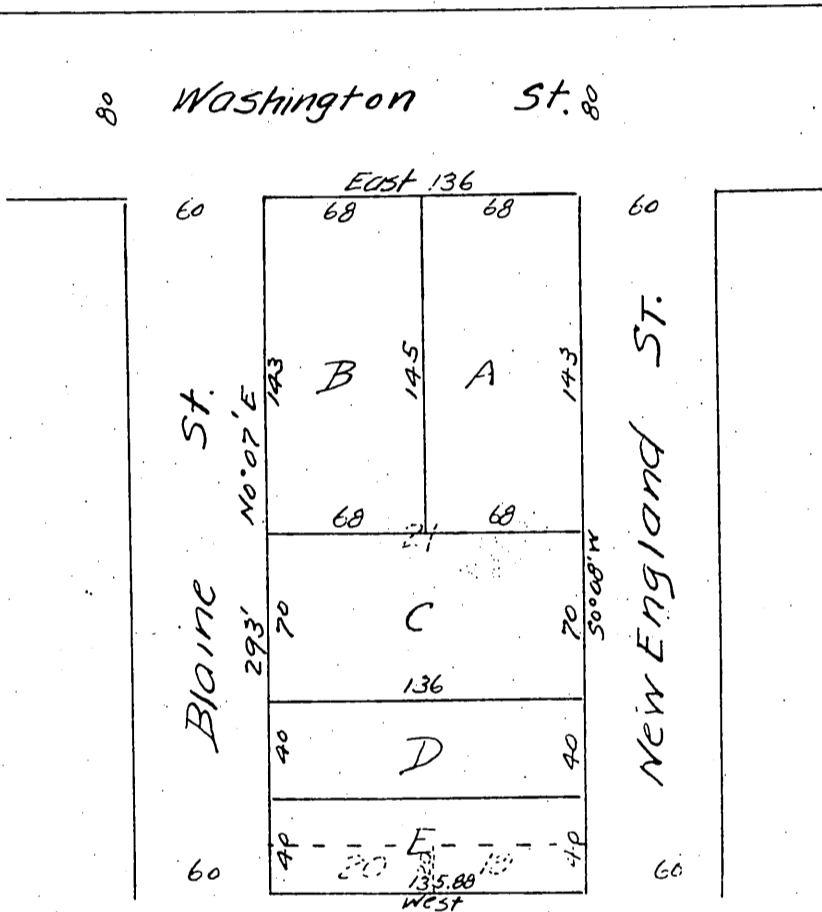
being lot 21 & part of lots 19 & 20 of the

C.W. Davis & Freeman Tract.

Scale 1 inch = 40 ft.

April 1897

Surveyed by J. De Lacy C.E.



*(Signature)*

A full true and correct copy of the original

(Scale reduced to 80 ft = 1 in.)

Recorded May 4, 1897 at 6 min past 3 P.M.

at request of D.W. Jeffers

E.C. Hodgman County Recorder  
By E.T. Wright Co. Surveyor