



Robinson's Subdivision

of L. 51, 2, 5th and 6th Blocks A

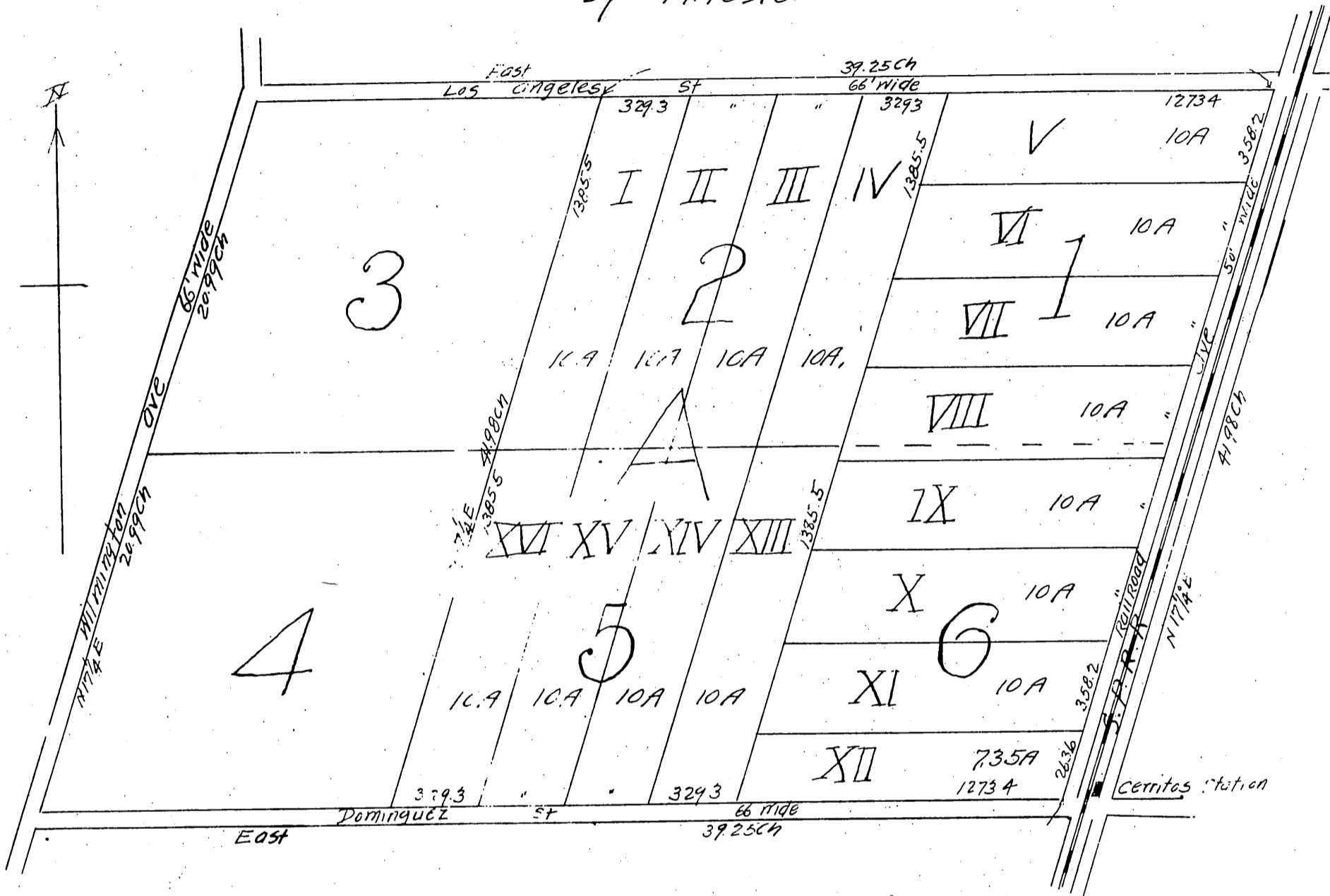
Dominguez Colony Tract

Rancho San Pedro

Los Angeles Co, California

As Surveyed Apr 9, 1897.

by W.A. Foster



(Witness John Hickey)

A full true and correct copy of the original
 (Scale reduced to 500'-1")
 Recorded Jun 4, 1897, at 12 min past 10. am
 at request of W. Robinson.

EC Hodgman County Recorder
 By E. T. Wright Co Surveyor.