



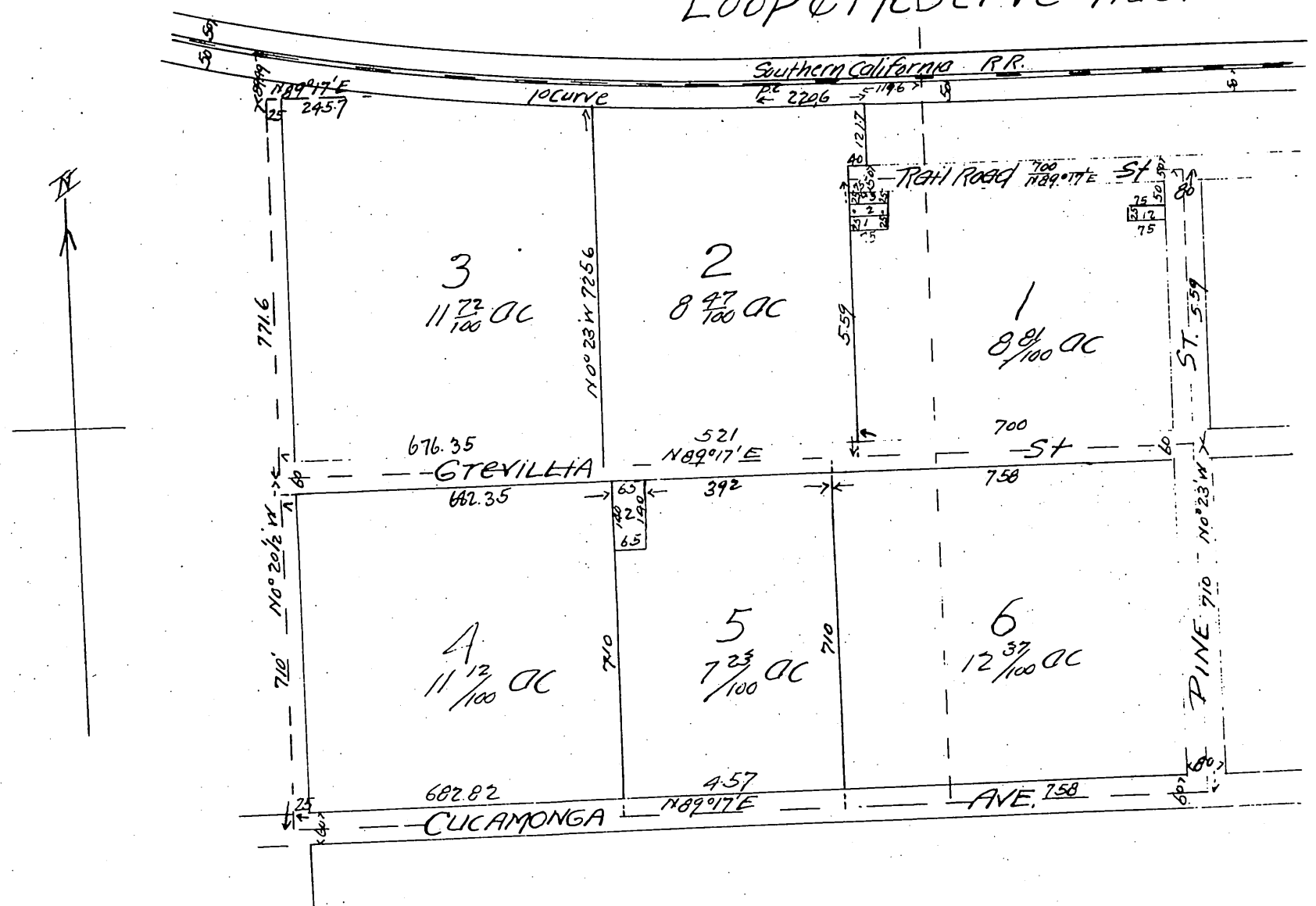
Morris M. Dewey's (Trustee)

Rearrangement of part of
Palomares Townsite.

100

situated in
Loop & Meserve Tract.
Pomona, Los Angeles Co, Cal.
W.H. Sanders C.E.
C.H. Sanders Del.

Loop & Meserve Tract



Morris M. Dewey Trust

A full, true and correct copy of the original.
 (Scale 300 ft = 1 inch)
 Recorded Jun 7, 1897 at 30 min past 1 P.M.
 at request of First Nat Bank Pomona
 E.C. Hodgman County Recorder
 By E.T. Wright Co Surveyor.