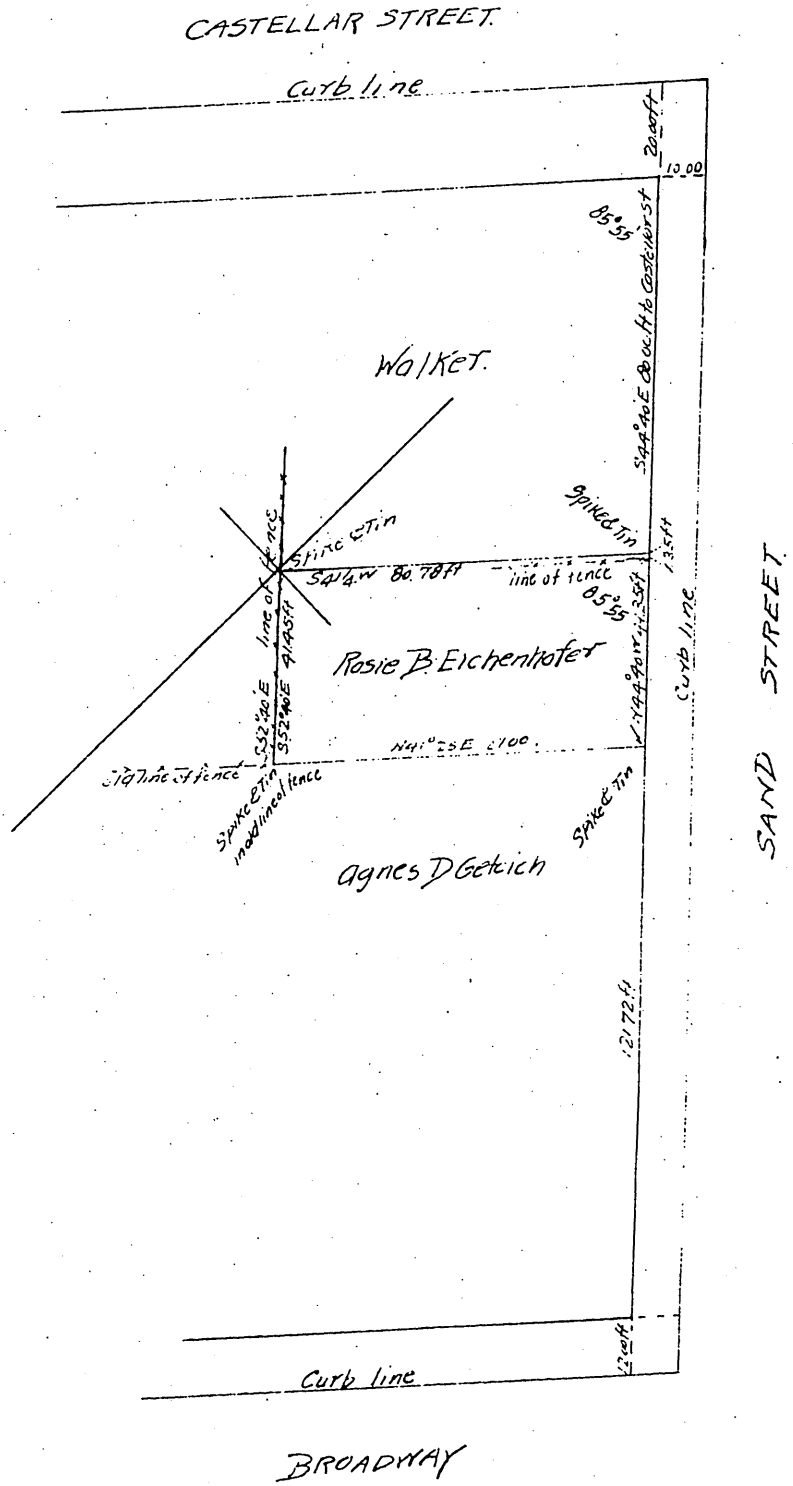


Plat of Northerly side of Block B, Fort Hill Tract

City of Los Angeles, Cal.
Surveyed by John Goldsworthy
January 2, 1897.
Scale 20ft = 1 inch.
True courses $V_6 14^{\circ} 35' E$



(11 11 11)
at New York City

A full, true and correct copy of the original
(Scale reduced to 40 feet to 1 inch)
Recorded Jan 8 1897 at 53 min past 4 P.M.
at request of R.B. Eichenhofer.

EL HAZYMAN County Recorder
By E.T. Wright Co Surveyor