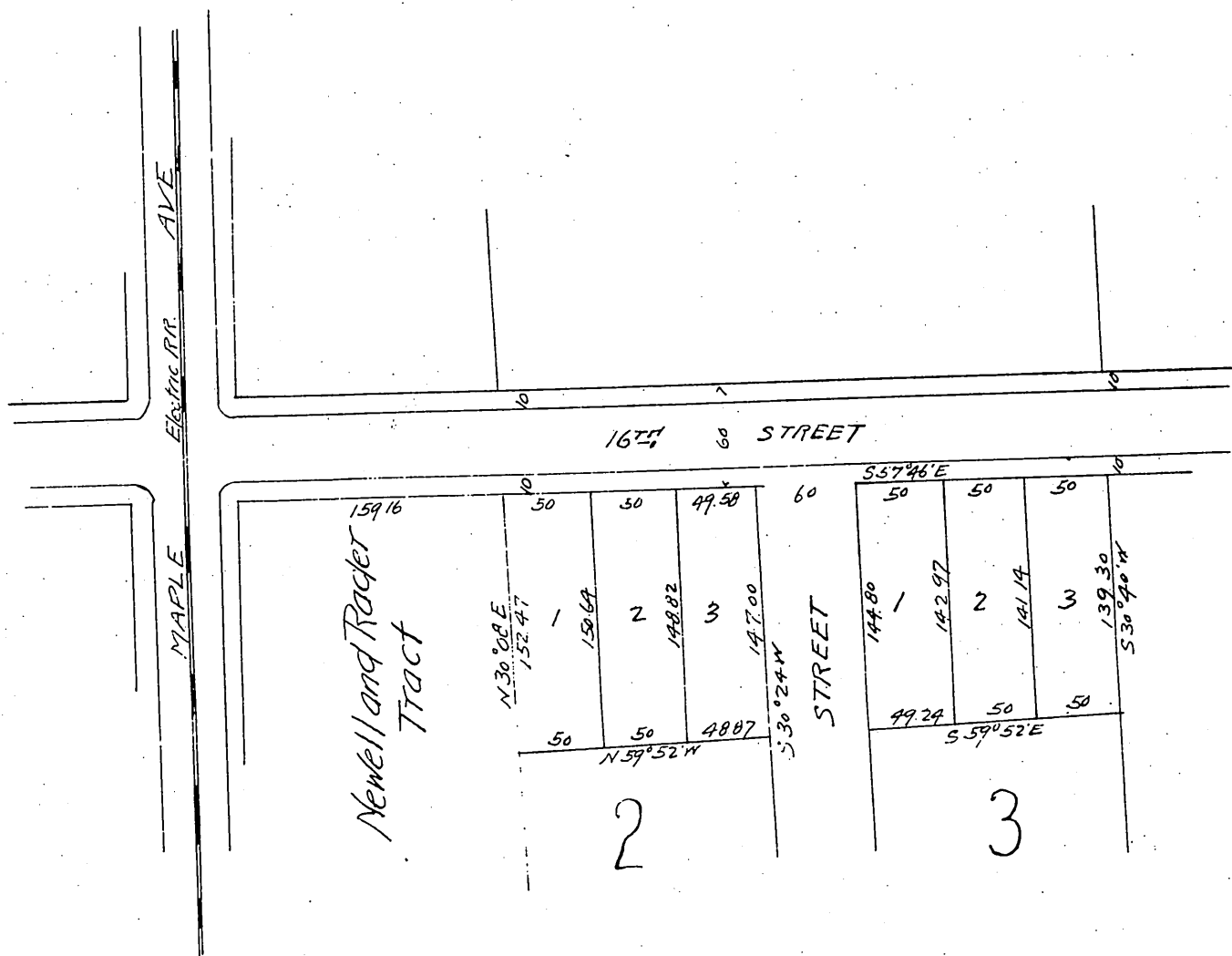


Portions of Blocks 2 and 3
of
W. Hellman's Sixteenth Street Tract
Los Angeles, California
Scale 1 in = 100 ft.
Wright and Nicholson
Nov 1896



(Signed) W. H. Hellman

A full, true and correct copy of the original.
Recorded Jan 11, 1897 at 6 Min Past 11 O'Clock
at request of W. Stanten, Agent
E.C. Hodgman County Recorder
BY E.T. Wright Co Surveyor