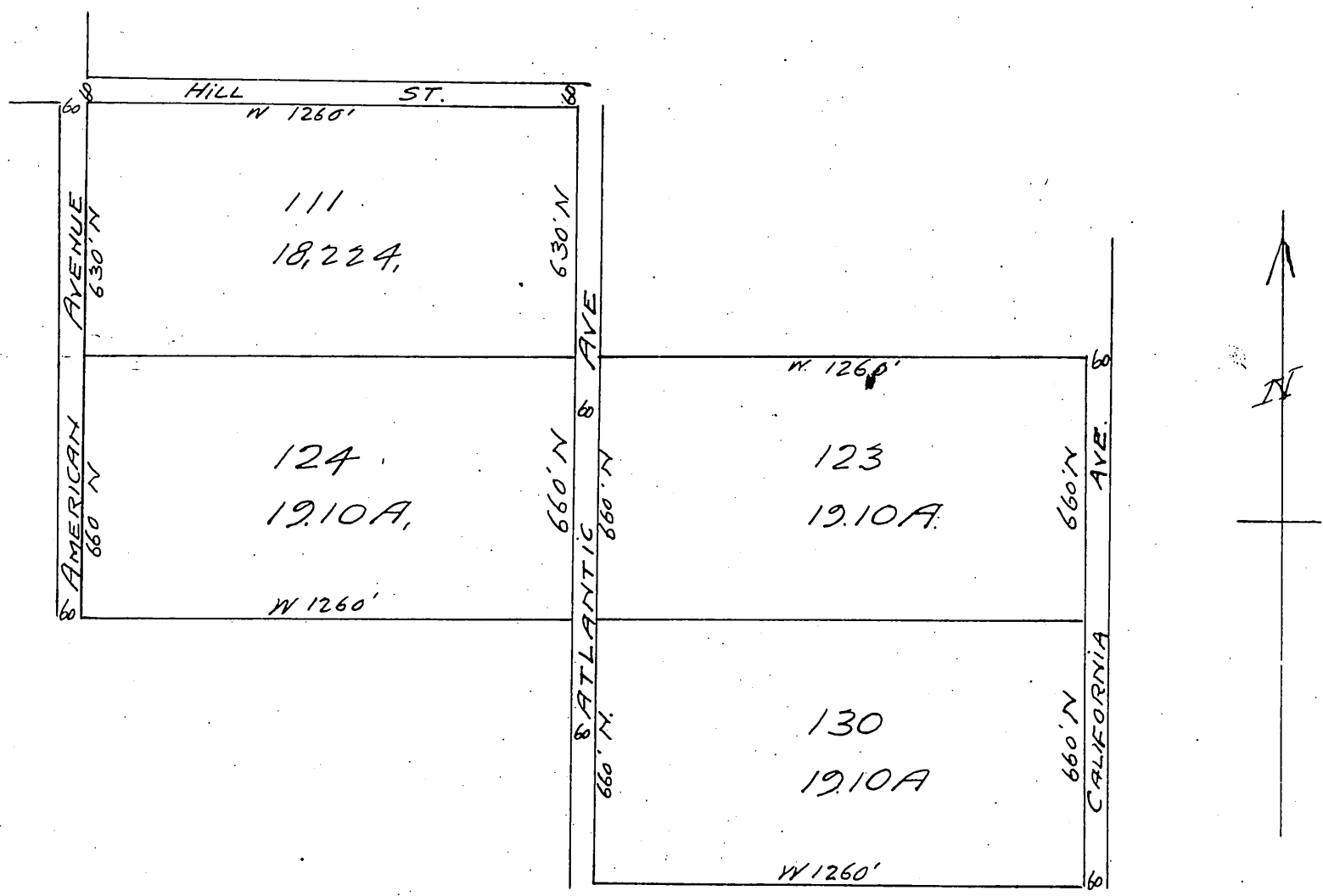


45410

Map of a portion of
 Felt & Co's First Addition to
 Long Beach,
 as reverted to acreage by order of Board of Supervisors.
 Being Lots 111, 123, 124 & 130
 of
 American Colony Tract,
 as recorded in Book 19 Pages 89 & 90 M.R.
 Scale 300' = 1"



Minute Book 24, Page 30

February 17th 1897

Inte-location of Streets and avenues and Restoration to acreage of certain lots and Blocks in Felt & Co's First Addition to Long Beach

This being the time regularly set by order of this Board and publication of notice, there at for hearing the petition of Jotham Bix by et al, herein Jotham Bix appears and is sworn and examined and no protest having been filed upon motion of Supervisor Davis duly seconded and carried, it is ordered that, the following named streets and portions of streets and avenues, in Felt and Company's First Addition to Long Beach, as per map of the same, recorded in Book 21 of Page 65 of Miscellaneous Records of Los Angeles County California, viz, The north 30 feet of Second Street, from Atlantic Avenue to California Avenue, the north 30 feet of Third Street, from American Avenue, to Atlantic Avenue, all of Third Street from Atlantic Avenue to California Avenue, all of Fourth Street, from American Avenue to Atlantic Avenue, the South 30 feet of Fourth Street, from Atlantic Avenue to California Ave, all of Pasadena Ave, from Third Street to Hill Street and all of Donney Avenue from Second Street to Fourth Street be and the same are hereby vacated and abandoned and the land there in, restored to acreage and it is further ordered that the division lines in Blocks A, B, C, D, E, F, I and U, of said Felt and Company's First Addition to Long Beach, be and the same are hereby obliterated and the said Blocks returned to acreage as Lots 111, 123, 124 and 130 of the American Colony Tract. This order is conditioned upon the filing for Record by petitioner in the office of the Recorder of Los Angeles County, California, of a certified Copy of this order attached to a map showing all property affected by the same.

a full, true and correct copy of the original,
 (Scale reduced to 400 ft. = 1 inch)
 Recorded Feb 25, 1897, at 5:10 min past 3 P.M.
 at request of J. Bix by
 EC. Hodgman County Recorder
 By E.T. Wright Co Surveyor.