



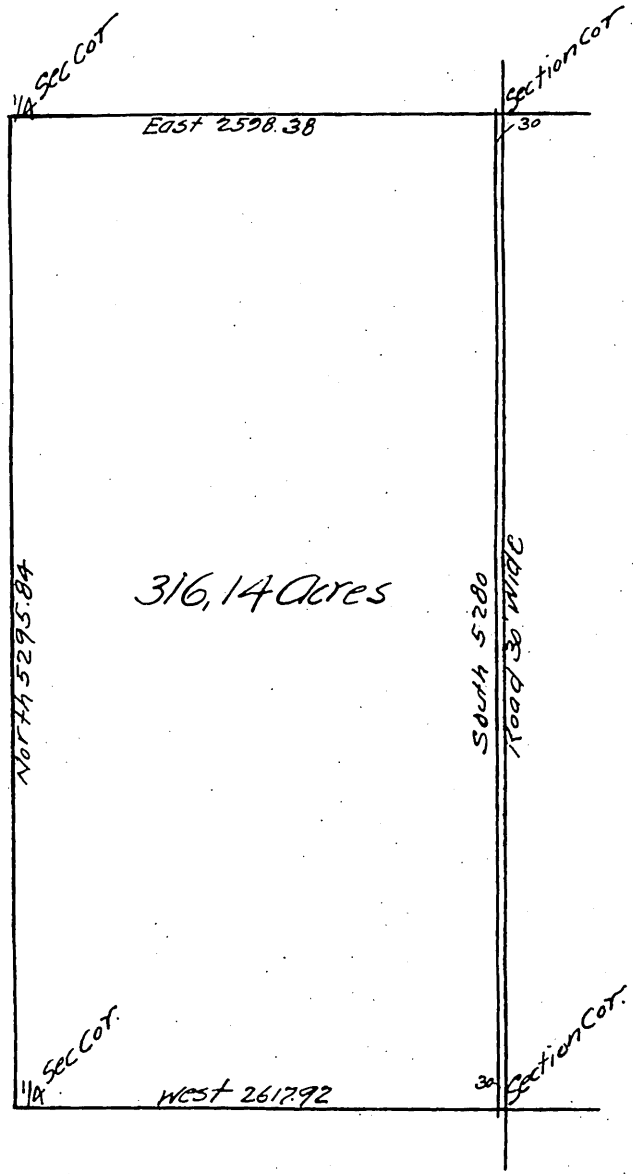
MAP

of

E 1/2 Sec. 32. T8N R15W S.B.M
as Vacated and Restored to acreage by order of
Board of Supervisors.

Feb 1897

Scale 1 in - 500 feet



Minute Book 29, page 32

February 17th 1897.

In revocation of streets and avenues in } The petition of John L. Livesey, et al, for the vacation of the
and the restoration of Government Subdivision } Streets and Avenues platted on the east 1/2 of Sec 32, T. 8 N,
of E 1/2, of Sec 32 T. 8. N. R. 15 W. S. B. M. } R. 15 W. S. B. M. being a part of the plot made by the Alameda
Colony and recorded on Pages 47 and 48 of Book 53 of the
Miscellaneous Records of Los Angeles County, California and the restoration to its original Government
Subdivisions, is presented and read, and upon motion of Supervisor Hanley duly seconded and carried
it is ordered that the prayer of the petitioners be and the same is hereby granted, conditioned upon the filing
for record by petitioners, in the office of the Recorder of Los Angeles County California of a certified copy of this
order attached to a map showing all property affected by the same.

A full, true and correct copy of the original.
(Scale reduced to 1000 ft - 1 inch)
Recorded Feb 26, 1897 at 5:30 min past 10 a m
at request of A. Scott.

EC. Hodgman County Recorder
By E.T. Wright Co Surveyor.