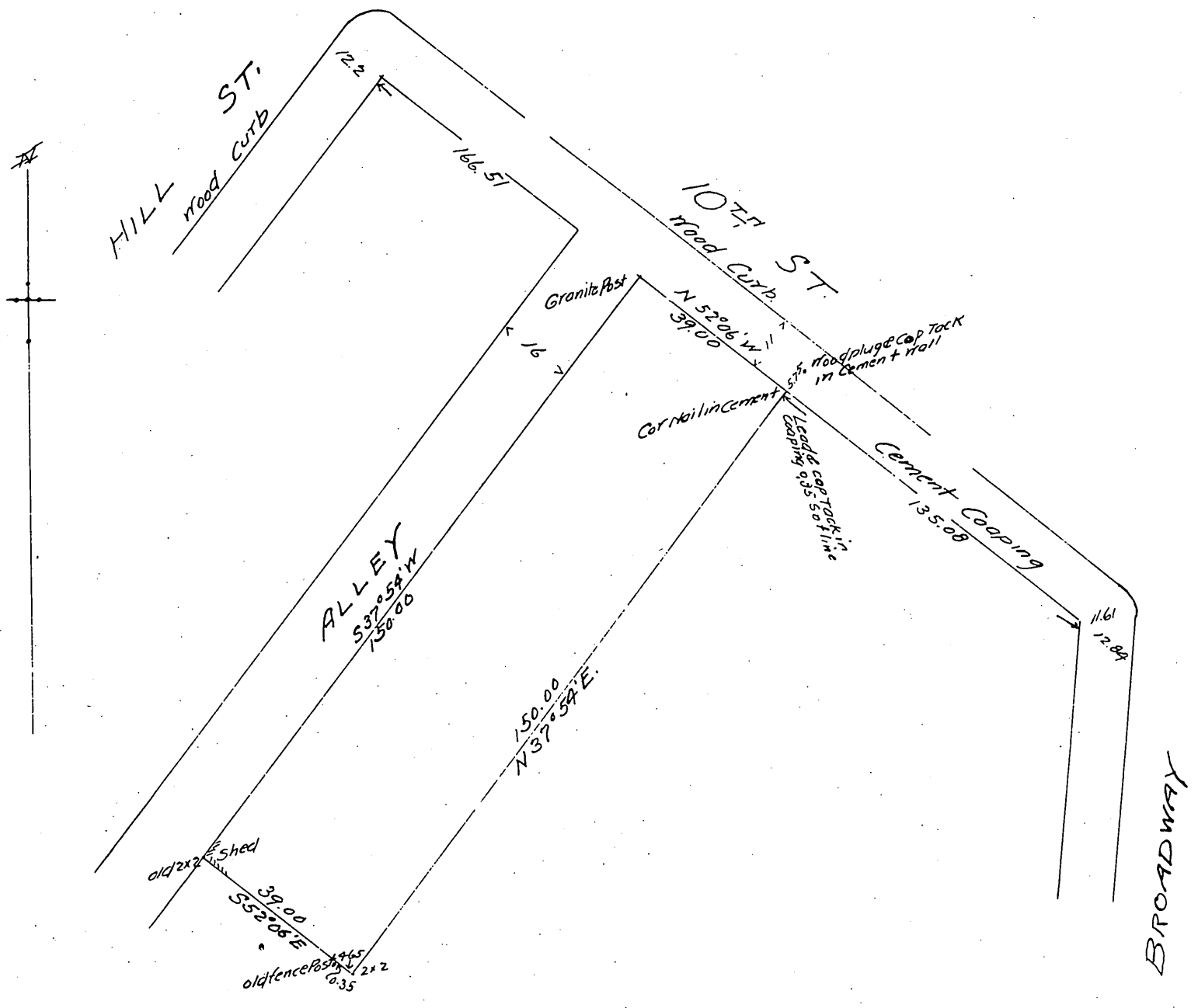


H W. Hellmans 10th St. Lot
 being part of Lots 7 & 8 of E. H Workman Tract
 Los Angeles Cal.

Surveyed by Wright & Nicholson Feb 1897



Proprietor { Herman W. Hellman.

A full, true and correct copy of the original
 (Scale reduced to 30 ft - 1 inch)
 Recorded Feb 26, 1897 at 4 P.M.
 of request of H. W. Hellman.

E.C. Hodgman, County Recorder.
 E.T. Wright, Co Surveyor.