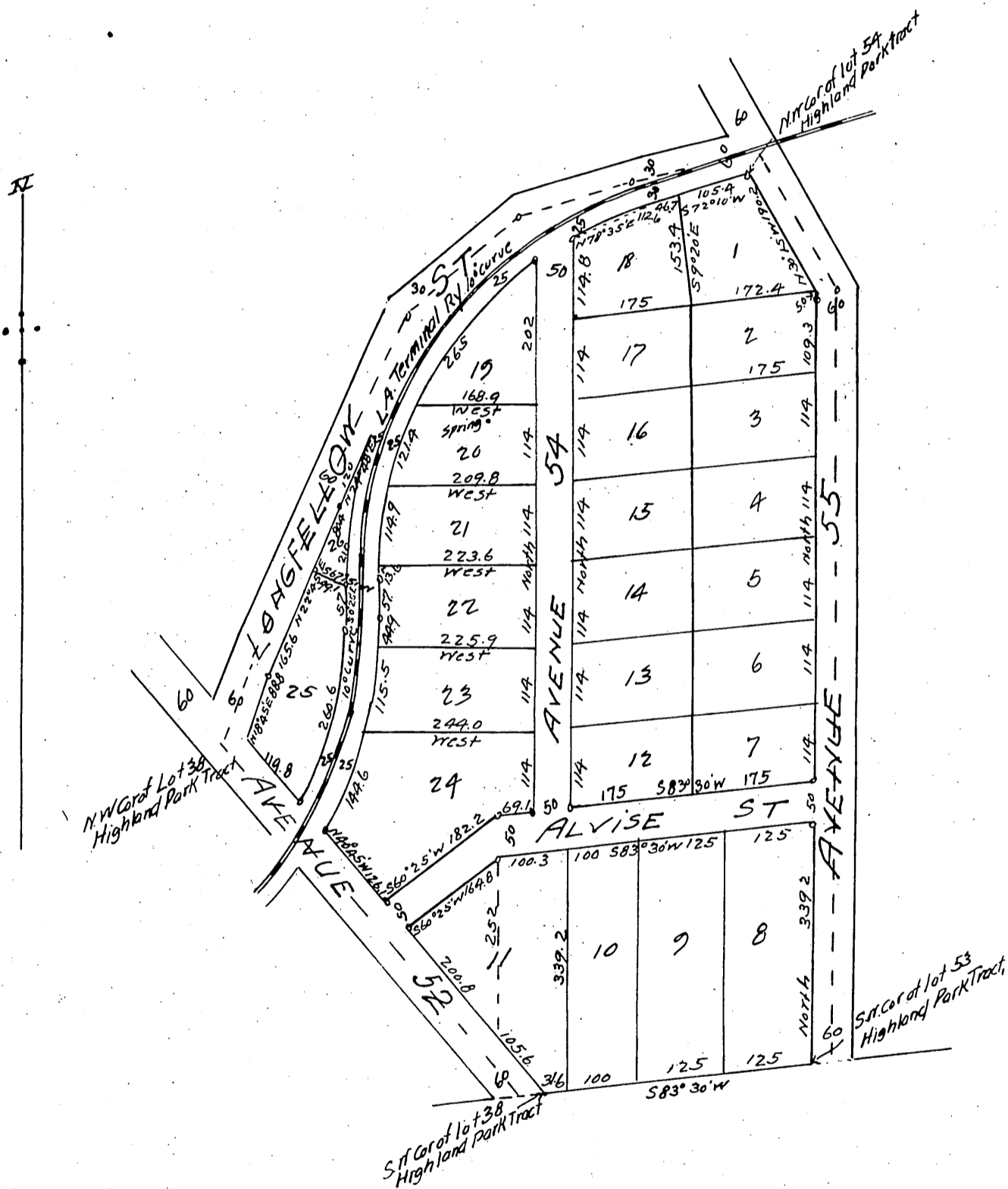


MAP  
 of  
 The Spring Tract  
 being  
 Subdivision of Lots 38, 53, 54 & 55  
 Highland Park Tract.  
 Los Angeles Cal.  
 Surveyed Feb 1897, by L. Friel C.E.  
 Scale 100 ft = 1 inch,



Mortgagee E. H. Winans.

Proprietor George W. Morgan.

A full, true and correct copy of the original  
 (Scale reduced to 200 ft = 1 in)  
 Recorded Mar 9 1897 at 41 min past 3 P.M.  
 at request of G. W. Morgan.

E. C. Hodgman, County Recorder  
 BY E. T. Wright Co Surveyor.