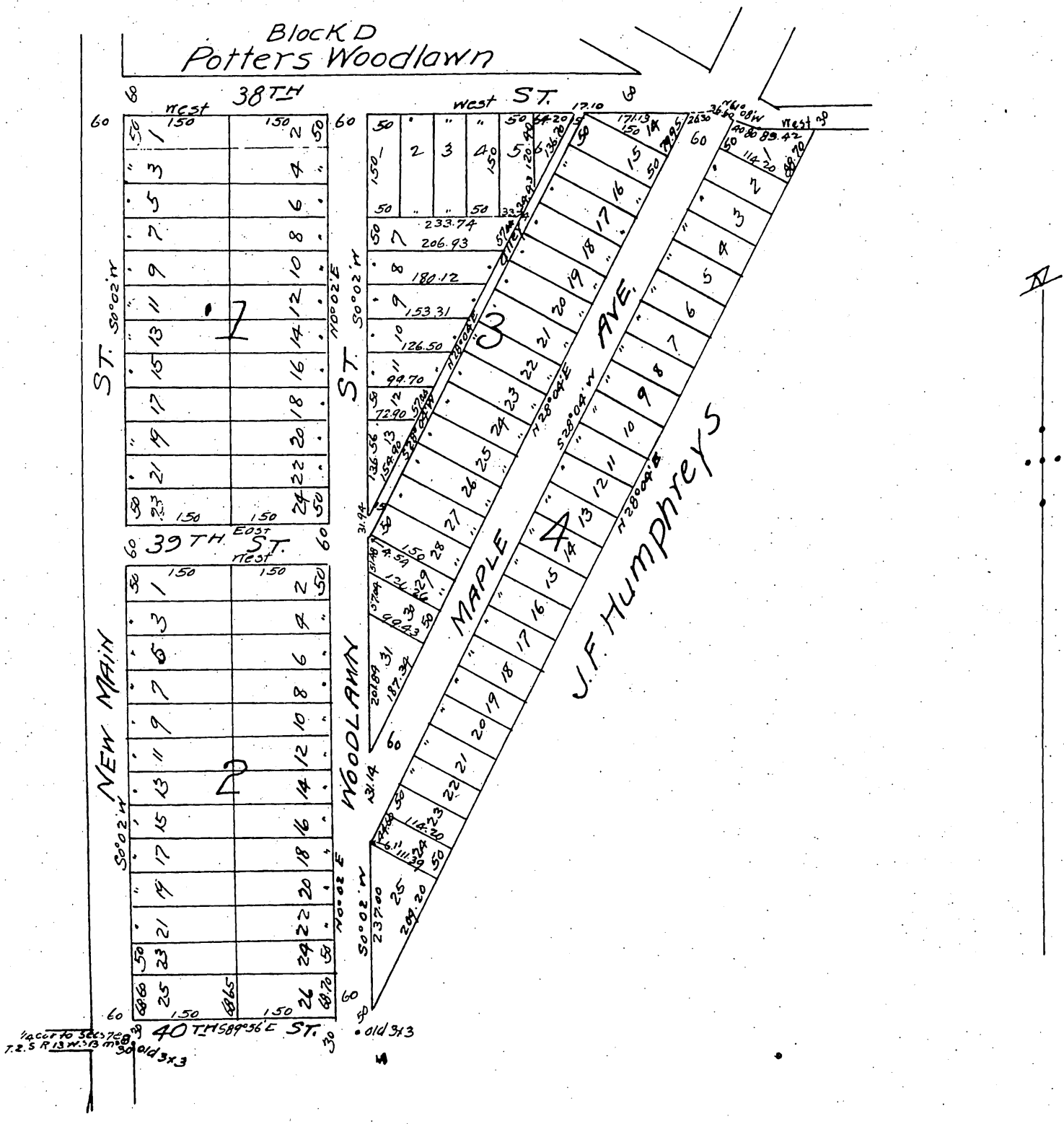




# WOODLAWN

Los Angeles Co, Cal.  
 being part of N. W. 1/4 Sec 8, T. 2, S. R. 13 W. S. B. M.  
 Scale 100 ft to 1 in.  
 Surveyed in February 1896, by Wright & Nicholson.



owners { J. B. Shepardson.  
 F. B. Hathaway.

A full true and correct copy of the original  
 (Scale reduced to 200 ft - 1 inch)  
 Recorded Map 5897 at 3:44 p.m. post 110 a.m.  
 at request of J. B. Shepardson

E. C. Hodgman, County Recorder  
 By E. T. Wright & Co. Surveyors.