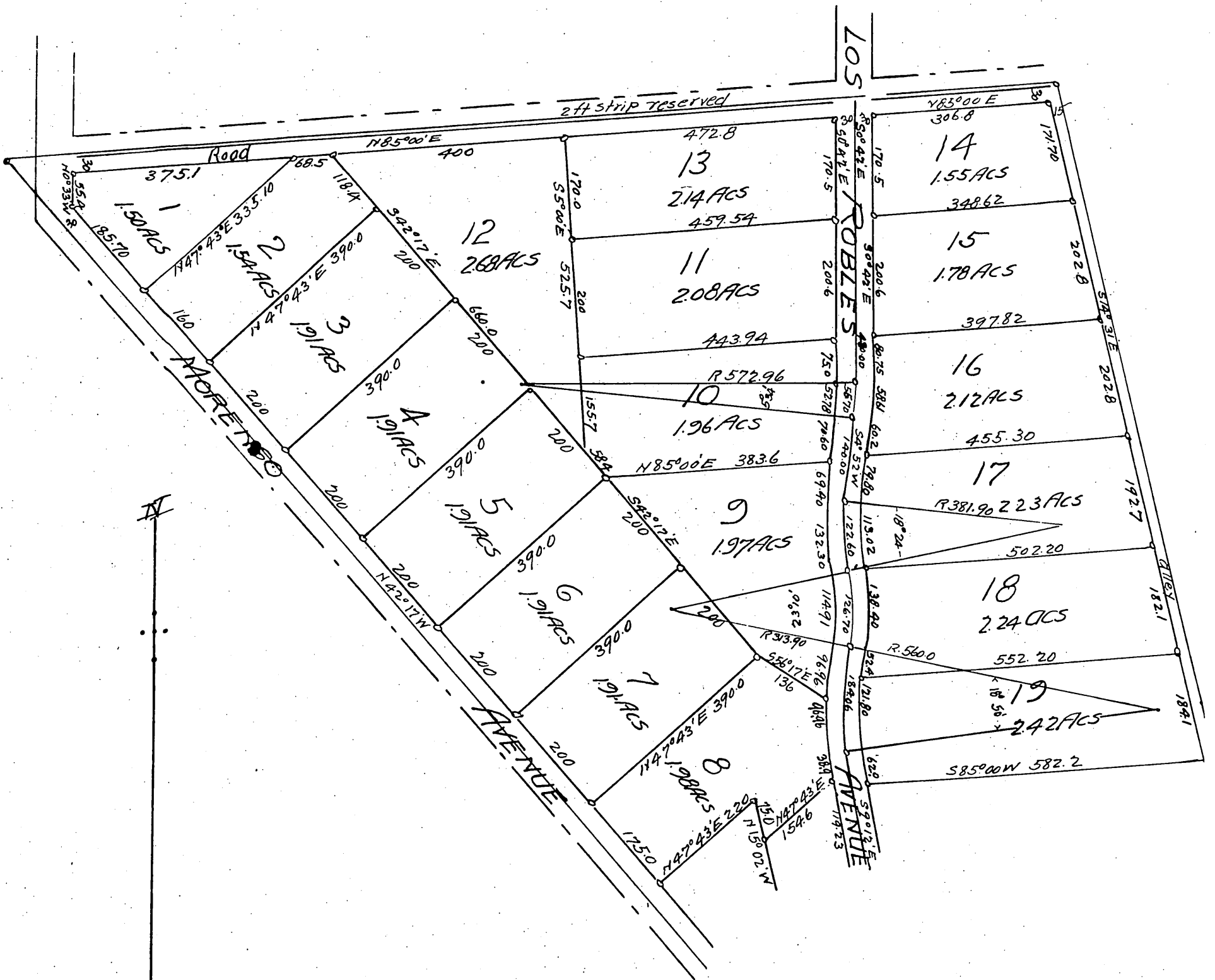
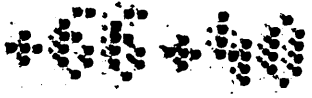


4039

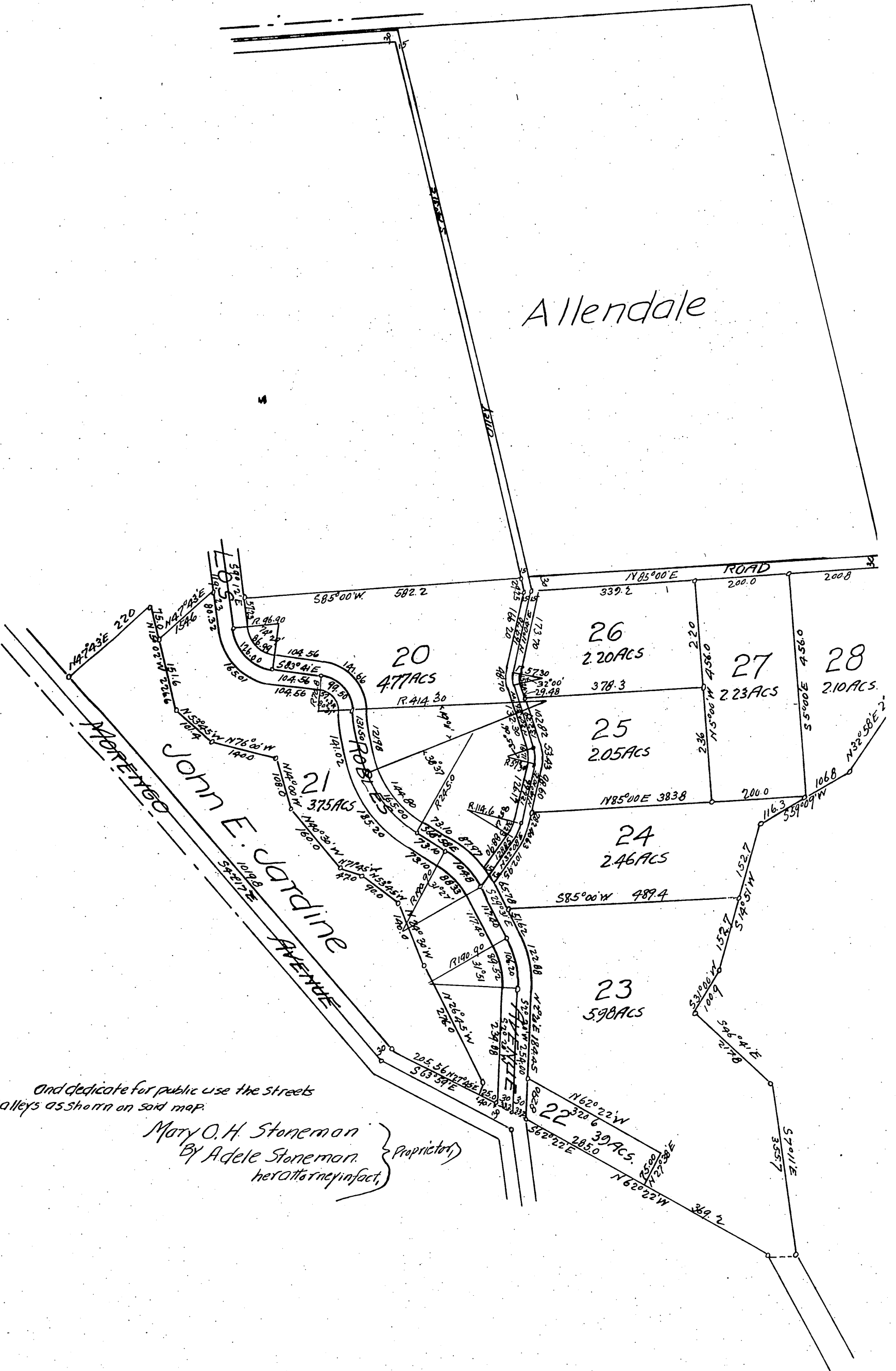
Map  
of  
**Los Robles Park**  
being a portion of  
**Los Robles Ranch**  
Los Angeles County California  
Surveyed April, 1897 by Wright & Nicholson.  
Scale 150ft=1in.  
Note book 134 pg 35

NOTE - All areas include streets except  
Lot on Los Robles Avenue





# Allendale



And dedicate for public use the streets  
and alleys as shown on said map.

Mary O. H. Stoneman } Proprietor  
By Adele Stoneman }  
her attorney in fact.

A full true and correct copy of the original  
(Scale reduced to 200ft-1in)  
Recorded May 19, 1897 at 29 Min past 2 P.M.  
at request of A. Stoneman.

E. C. Hodgman County Recorder  
By E. T. Wright Co Surveyor.