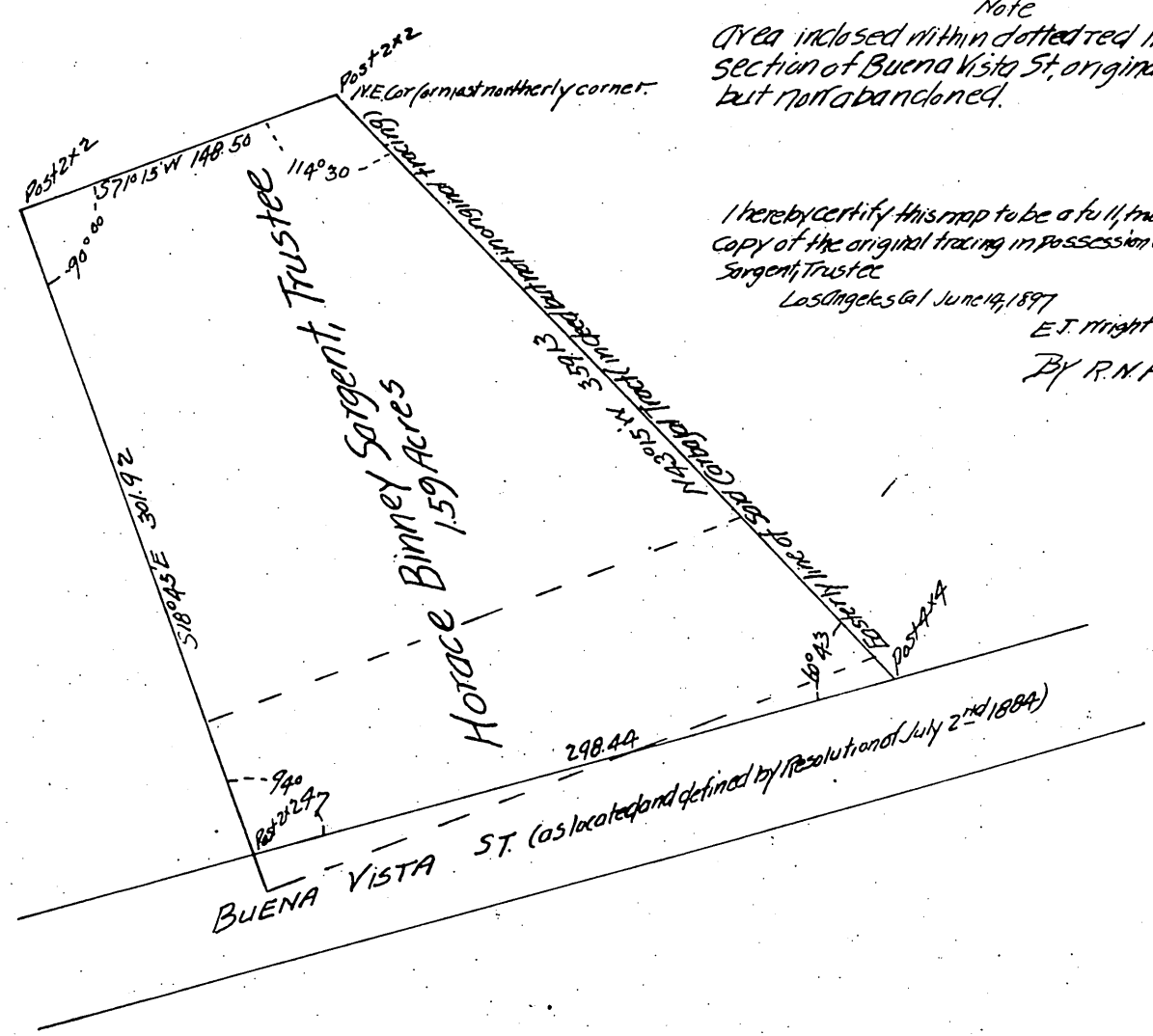


Plat  
of  
Tract of land conveyed  
by  
Mrs, Marta Carbajal  
to  
Horace Binney Sargent, Trustee  
surveyed  
Under the direction of Geo. C. Knox in Aug 1885  
Scale 50 feet to one inch

meridian



Note  
Area inclosed within dotted red lines shows  
section of Buena Vista St. originally reserved  
but not abandoned.

I hereby certify this map to be a full, true and correct  
copy of the original tracing in possession of Horace Binney  
Sargent, Trustee  
Los Angeles Cal June 14, 1897  
E.T. Wright Co, Surveyor  
By R.N. Frick Deputy

A full, true and correct copy of the original.  
(Scale reduced to 80 ft - 1 in)  
Recorded Jun 14, 1897 at 5 PM, past 3 P.M.  
at request of H. B. Sargent.  
E.C. Hodgman, County Recorder  
By E.T. Wright Co Surveyor.