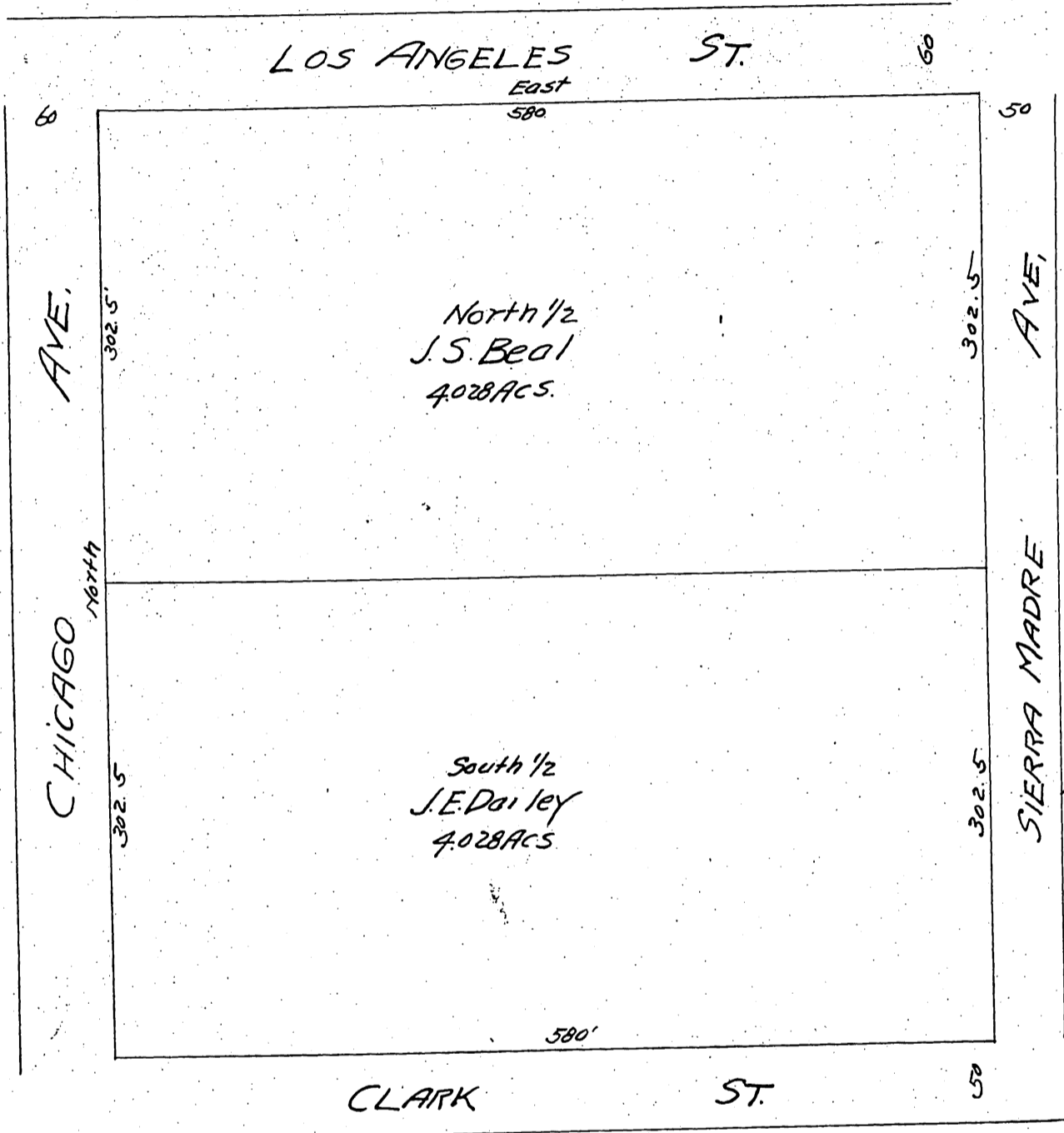


Re-plat
of
Block 20 of Vineland
as recorded in Book 24 page 9 Miscellaneous Records of
LOS ANGELES COUNTY
Scale 100ft=1in J.S. Marsh, Draftsman

Note Alley in Block 20 as shown
on map of M.R. 24.9 vacated by Board
of Supervisors Feb 21st 1891.



Owners: J.S. Beal
J.E. Dailey

A full true and correct copy of the original
Recorded Jun 15, 1897 at 4:49 PM. past 3 P.M.
at request of J.S. Beal

E.C. Hodgman County Recorder
B.Y.E.T. Wright Co Surveyor.