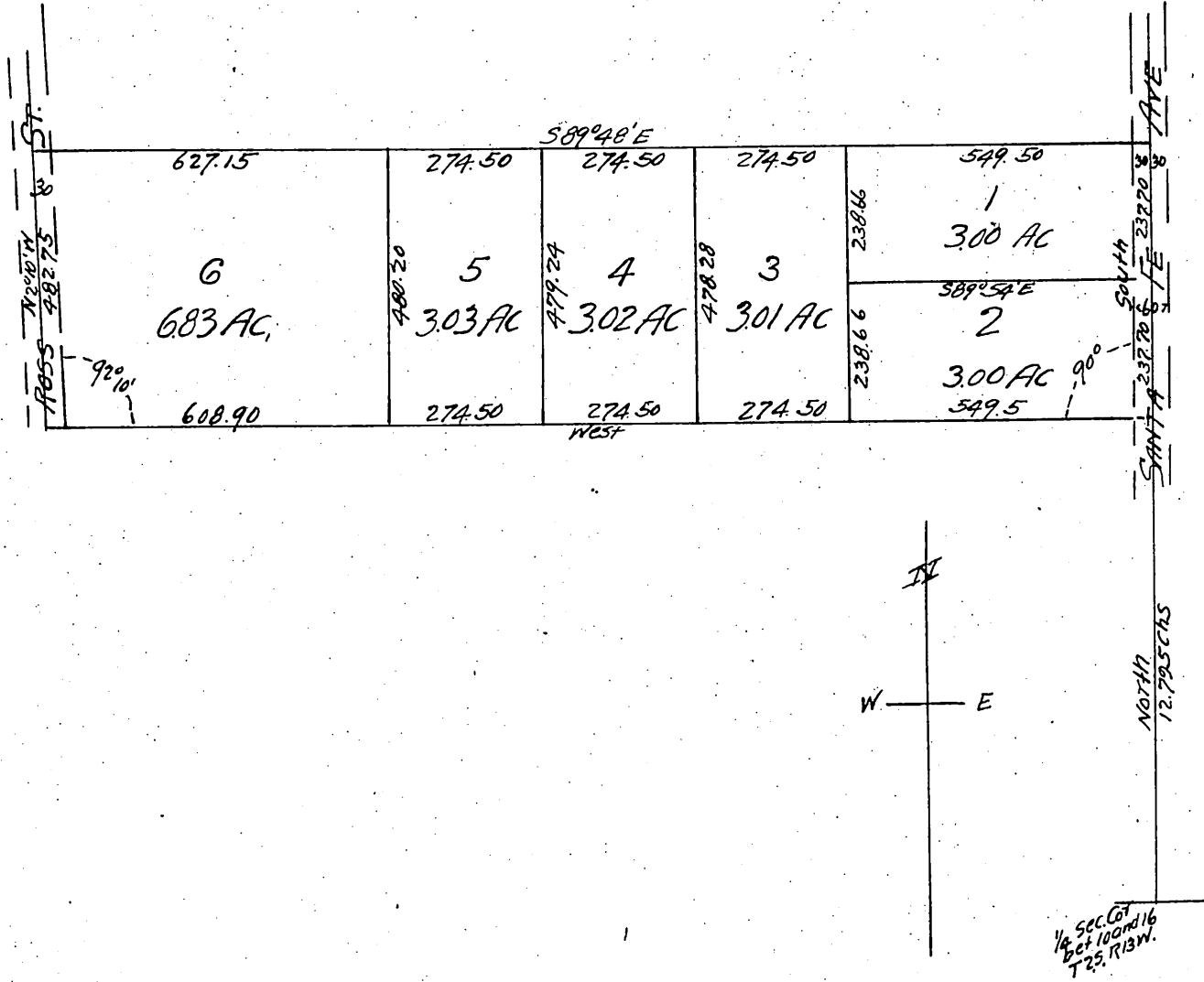


# Lopez' Subdivision

of part of the S. 1/2 of the  
S.W. 1/4 of Sec 10, T. 2 S, R. 13 W, S.B.M.

Scale 160ft = 1 inch

Note, Distances measured & Area calculated to center of streets



owners } Sobos Lopez.  
          } Jesus A. de Lopez.

A full, true and correct copy of the original.  
(Scale reduced to 300 feet to 1 inch)  
Recorded Jul. 23, 1897 at 12 Min past 11 A.M.  
at request of R.O. McKeon.

E.C. Hodgman, County Recorder.  
By E.T. Wright, Co. Surveyor.