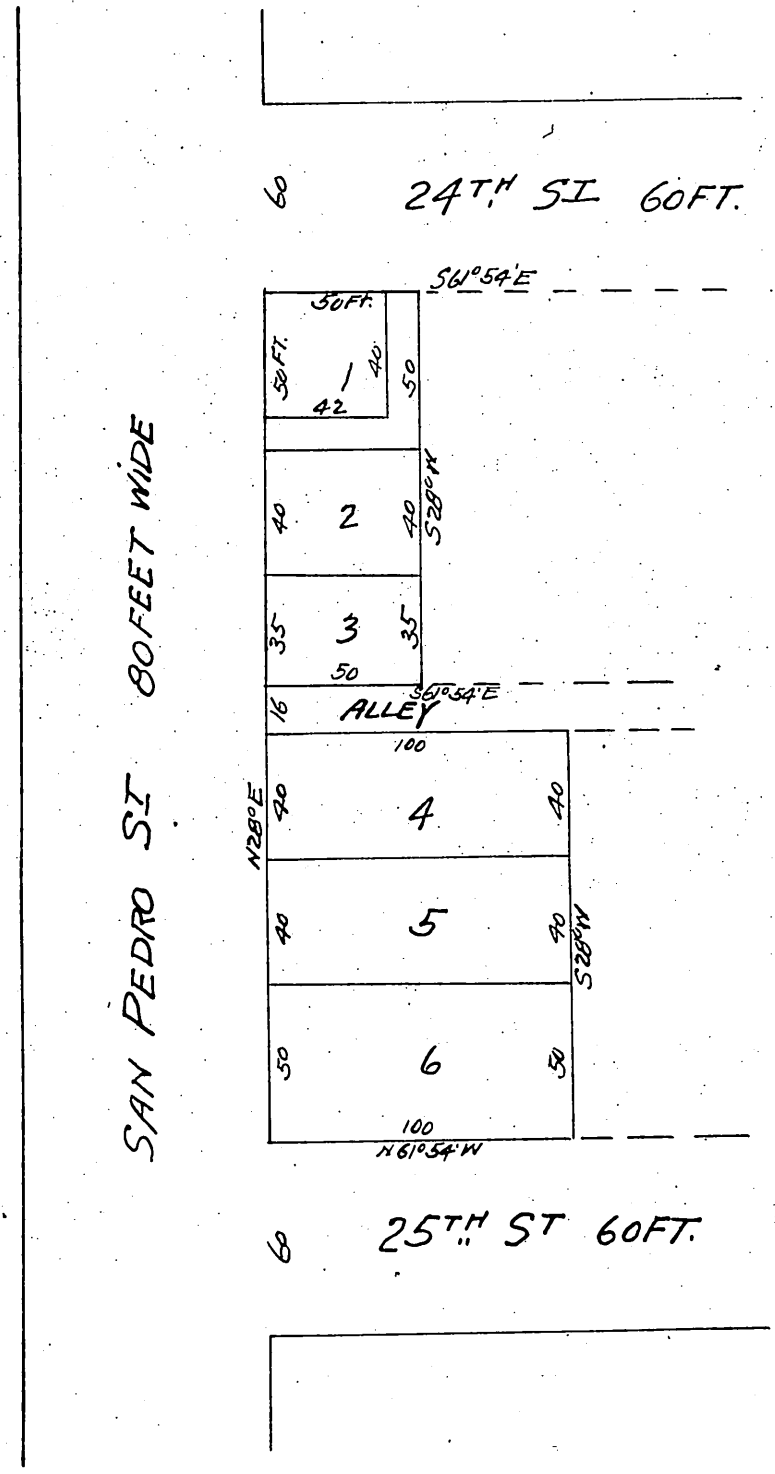




Map of
 W.S. Bryants Resubdivision
 of Lots 1, 2, 3, & 4, of Block D of
 Easton, Eldridge & Co's Subdivision
 of the Menlo Park Tract
 in the City & County of Los Angeles, California.
 July 21, 1897.
 John Goldsworthy.



Proprietor { W.S. Bryant.

A full, true and correct copy of the original.
 (Scale 60 feet to 1 inch)
 Recorded July 23, 1897 at 3:31 in past 2 P.M.
 at request of W.S. Bryant.
 E.C. Hodgman County Recorder.
 By E.T. Wright Co's Surveyor.