



Partition Map  
 of the unsubdivided portion of  
**A R. CAMPBELL - JOHNSTON EST.**

in

Ranchos San Rafael and San Pasqual.

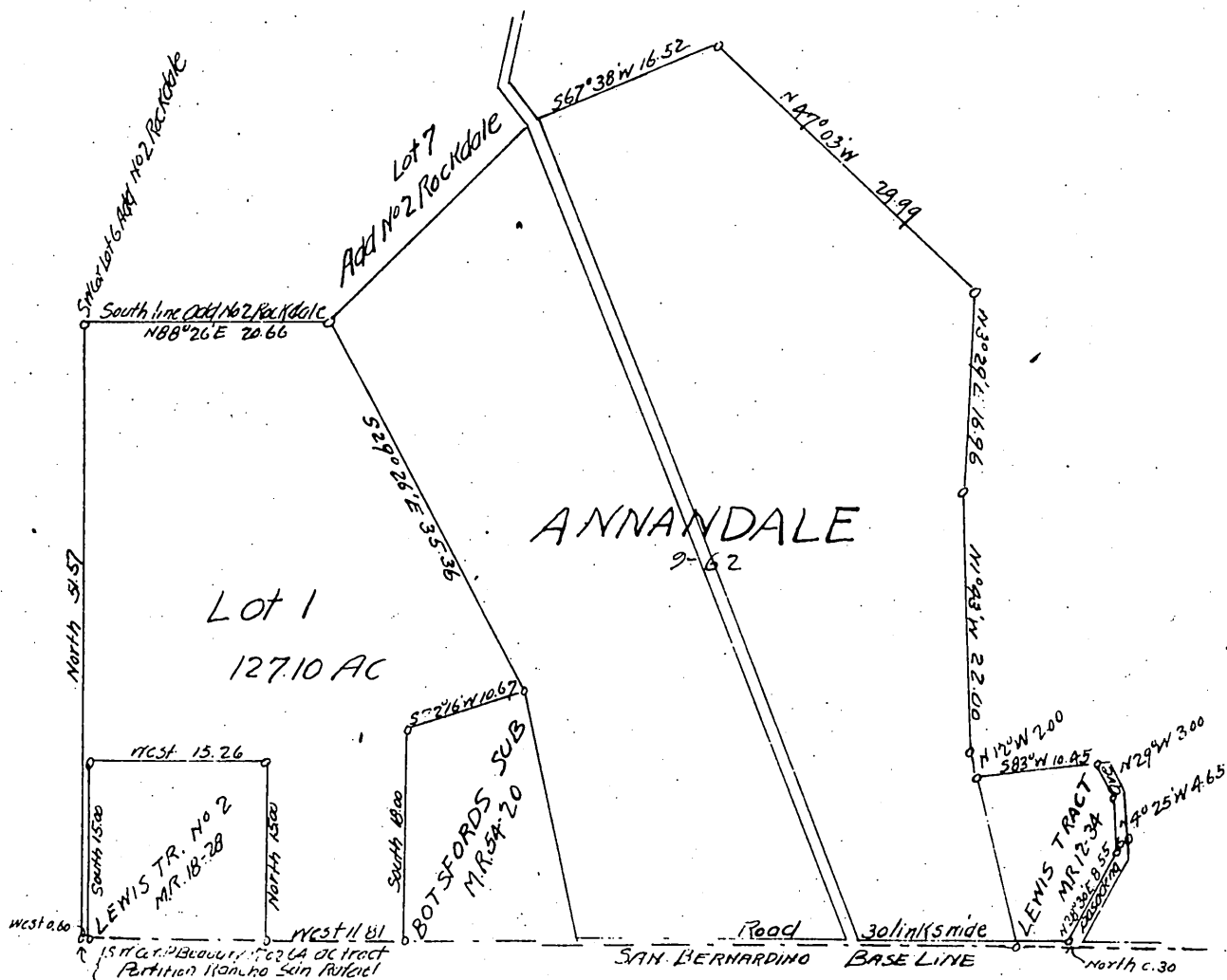
Compiled in June 1897

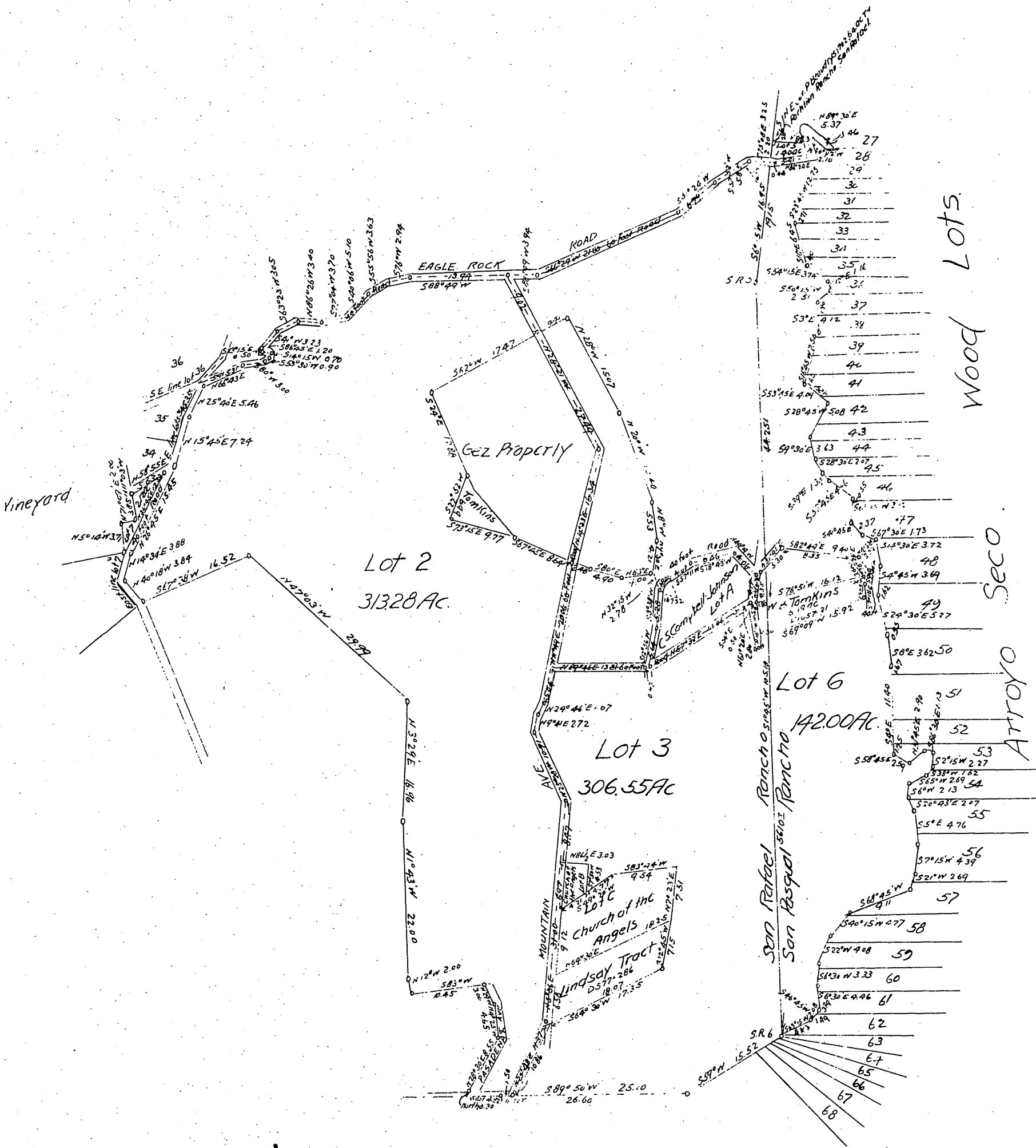
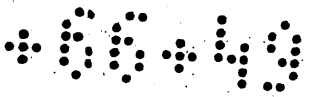
by

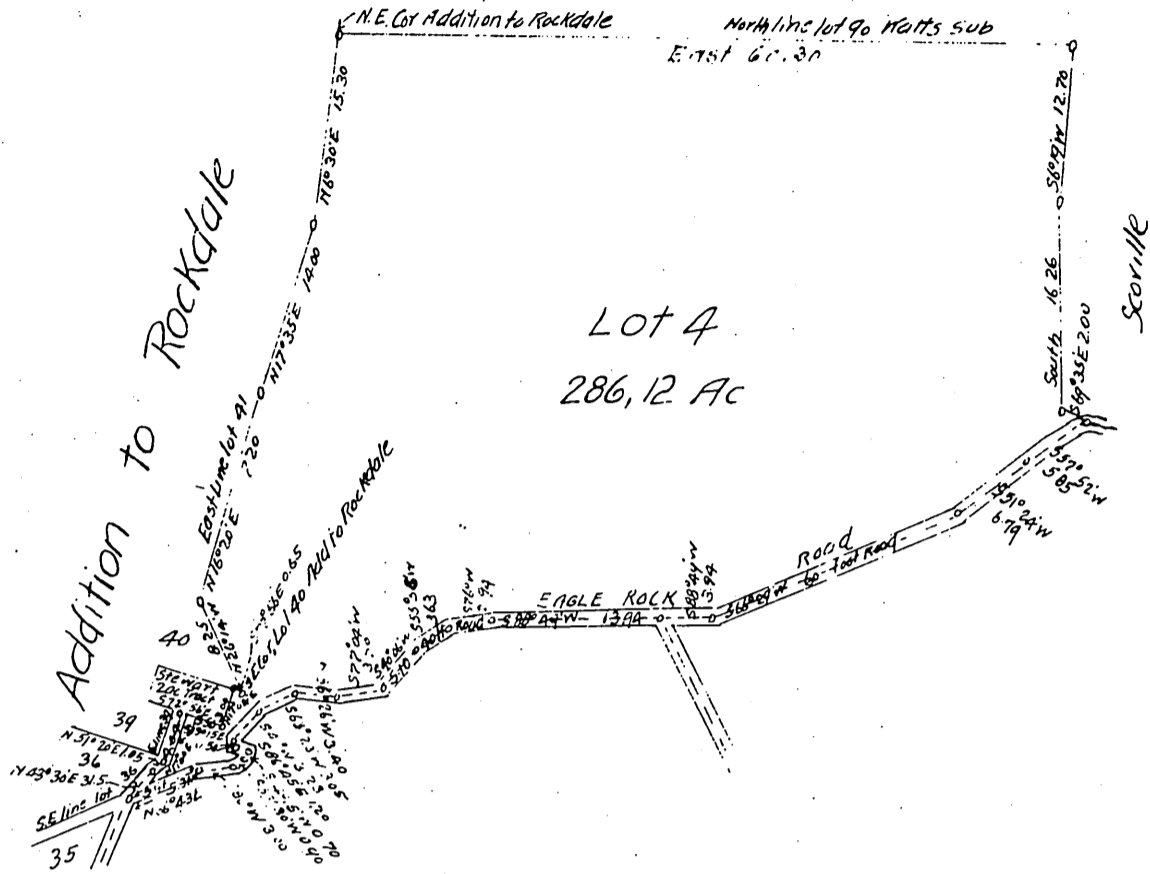
Wright & Nicholson

Scale 1 inch = 6 chs

Note - Areas to St. Centers







and dedicate for public use the streets and alleys as shown on this map.  
 A. Campbell-Johnston.

A full, true and correct copy of the original.  
 (Scale reduced to 15 chains to 1 inch)  
 Recorded Aug 5, 1890 at 9 min past 9 a m.  
 at request of A. Campbell-Johnston  
 E.C. Hodgman County Recorder  
 B.E.T. Wright Co Surveyor