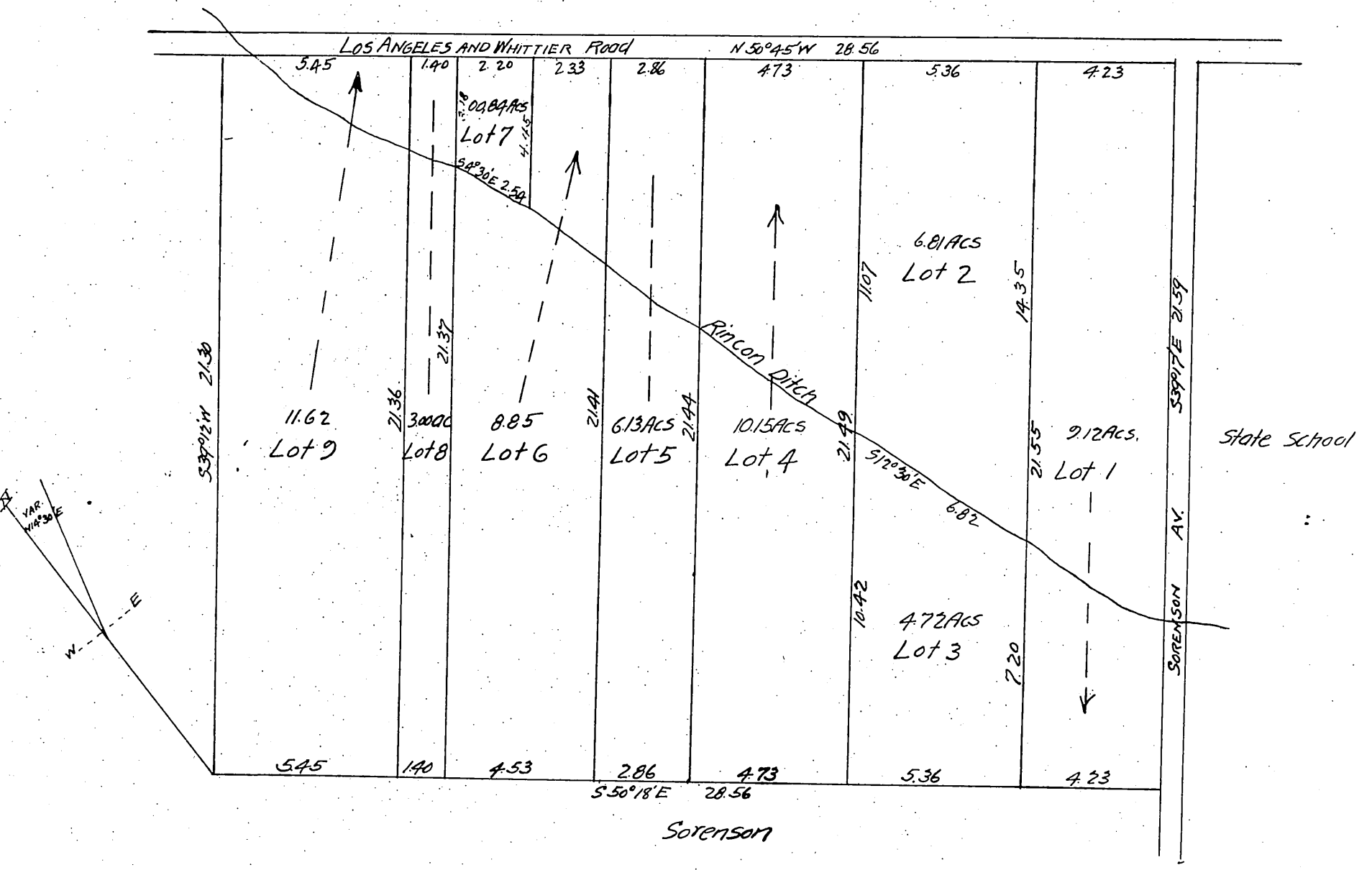




# Map of J.C. Hiatt's Subdivision of the Keith Tract

being a part of  
Tract 4 as per Misc. Records B23P55  
R<sub>0</sub>, Pasode Bartolo  
Los Angeles Co, Calif  
Surveyed May 1897  
by C.C. Brown, Hornalk  
Scale 2chs = 1 inch.  
Measurement exclude Roads.

NOTE:  
The broken lines and Arrow heads  
indicate that the lots include Both  
Sides of the Rincon Ditch.



owned by Helen L. Keith.

A full, true and correct copy of the original.  
(Scale reduced to 4 chains to 1 inch)  
Recorded Aug 10, 1897 at 9 min past 3 PM  
at request of N.M. Hiatt.

E.C. Hodaman County Recorder.  
BY E.T. Wright Co Surveyor.