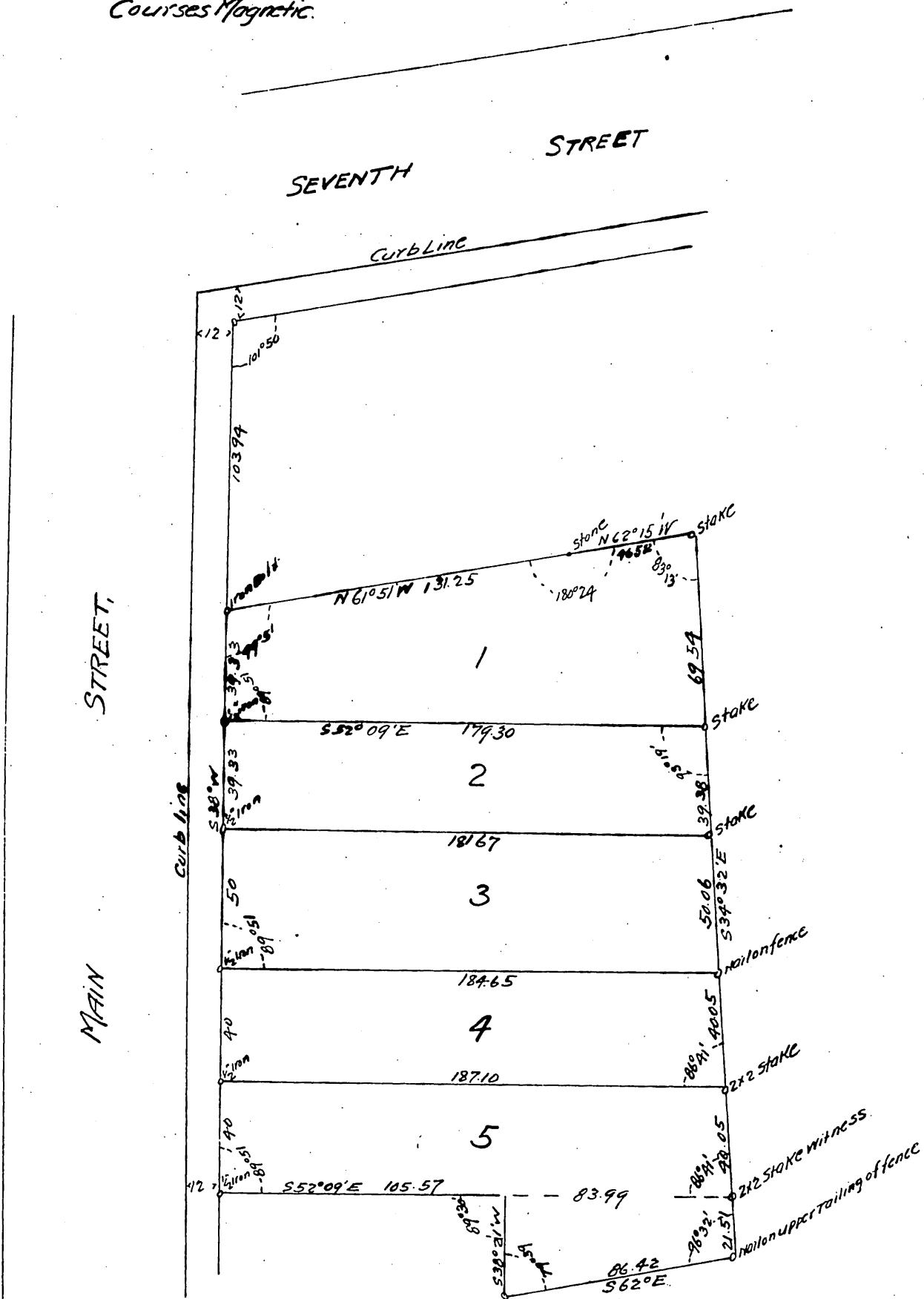




Map of Subdivision of a Portion of the Reyes Tract

as per map Recorded in Book 1, Page 258, of Miscellaneous
Records of the County of Los Angeles, Cal.
Surveyed May 1897, by Bernaldo Fisher
Scale 20 feet to One Inch.
Courses Magnetic.



and dedicate for public use the streets and alleys as shown
on this map Maria de Los Angeles Lopez de Reyes.

A full true and correct copy of the original.
(Scale reduced to 50 feet to one inch)
Recorded Aug 10 1897 at 32 min past 3 P.M.
at request of Maria de Los Angeles Lopez de Reyes.

EC. Hadgman County Recorder
By E.T. Wright, Co. Surveyor.