

# Map of Wagenbach's Subdivision

of the NE 1/4 of the NE 1/4 of Section 17, T.15.R.14.W.

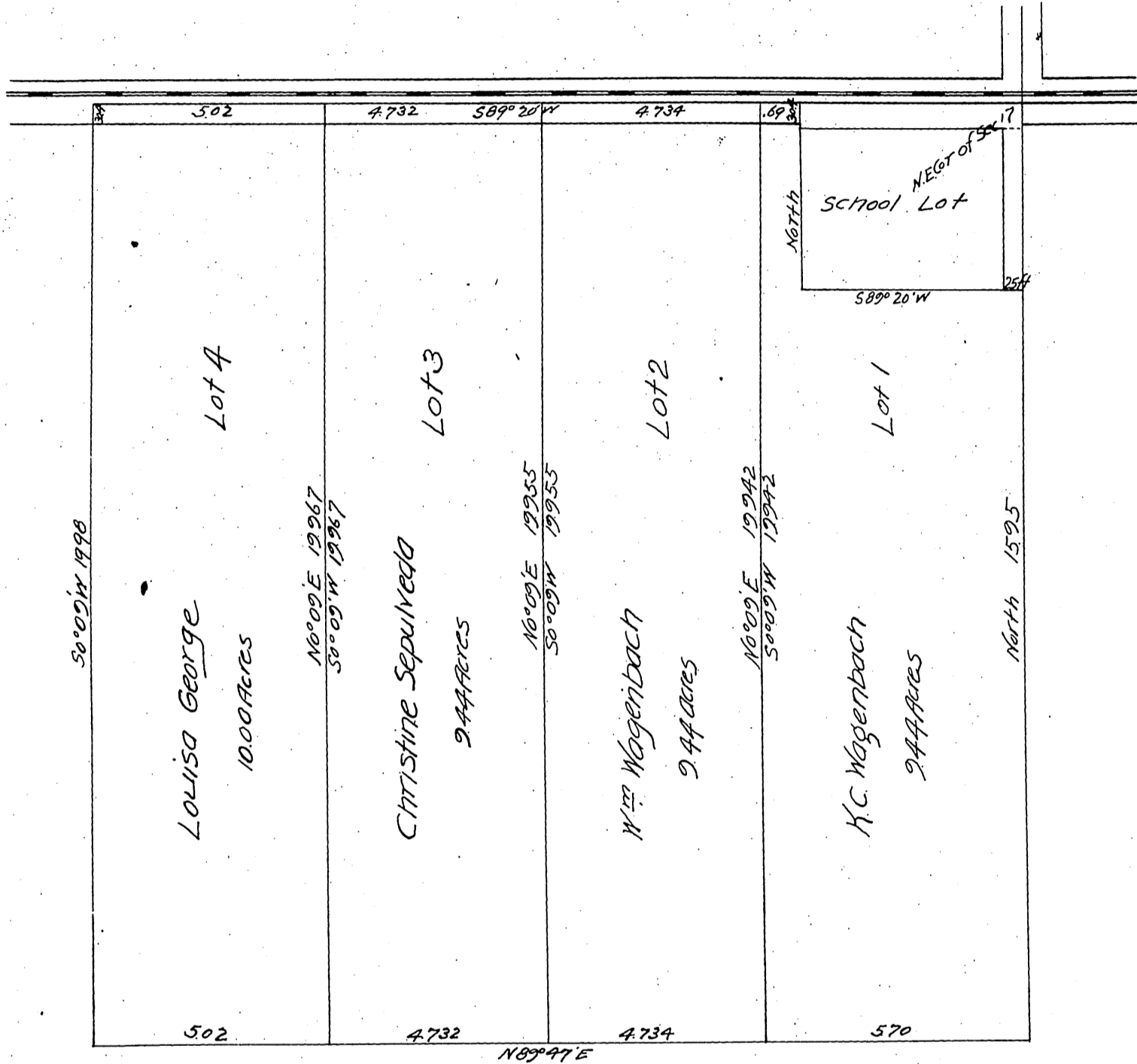
Los Angeles Co, California

Surveyed July 17, 1897

by John Goldsworthy

Courses True.

Scale 2chs=1in



Courses: Karl Wagenbach  
 Christina Sepulveda  
 W. Wagenbach  
 Louisa George

A full, true and correct copy of the original  
 (Scale reduced to 3 chains to 1 inch)  
 Recorded Aug 16, 1897 at 5:55 P.M.  
 at request of K.C. Wagenbach

E.C. Hodgson County Recorder  
 BY E.T. Wright Co Surveyor