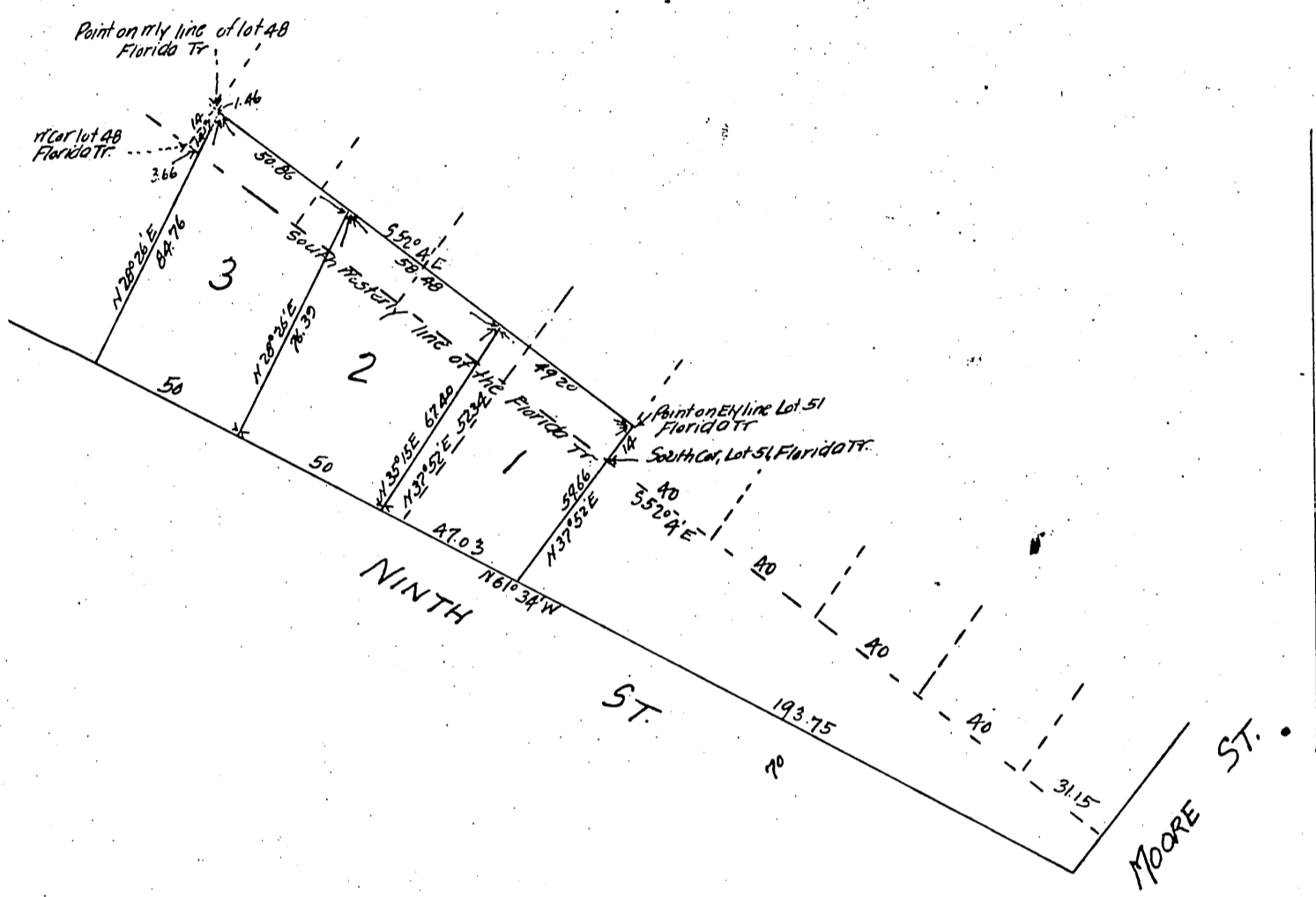




G.W. Stimson's  
 9<sup>th</sup> St Addition  
 to the  
 Florida Tract  
 Los Angeles, California  
 30' = 1"



Proprietor Geo W Stimson.

A full, true and correct copy of the original.  
 (Scale reduced to 50 feet to one in. - 1/2)  
 Recorded Aug 20 1897 at 11 a.m. P.M.  
 at request of G.W. Stimson.  
 E.C. Hodgman Co Recorder.  
 By E.T. Wright Co Surveyor.