



S.B. Weller's Resubdivision

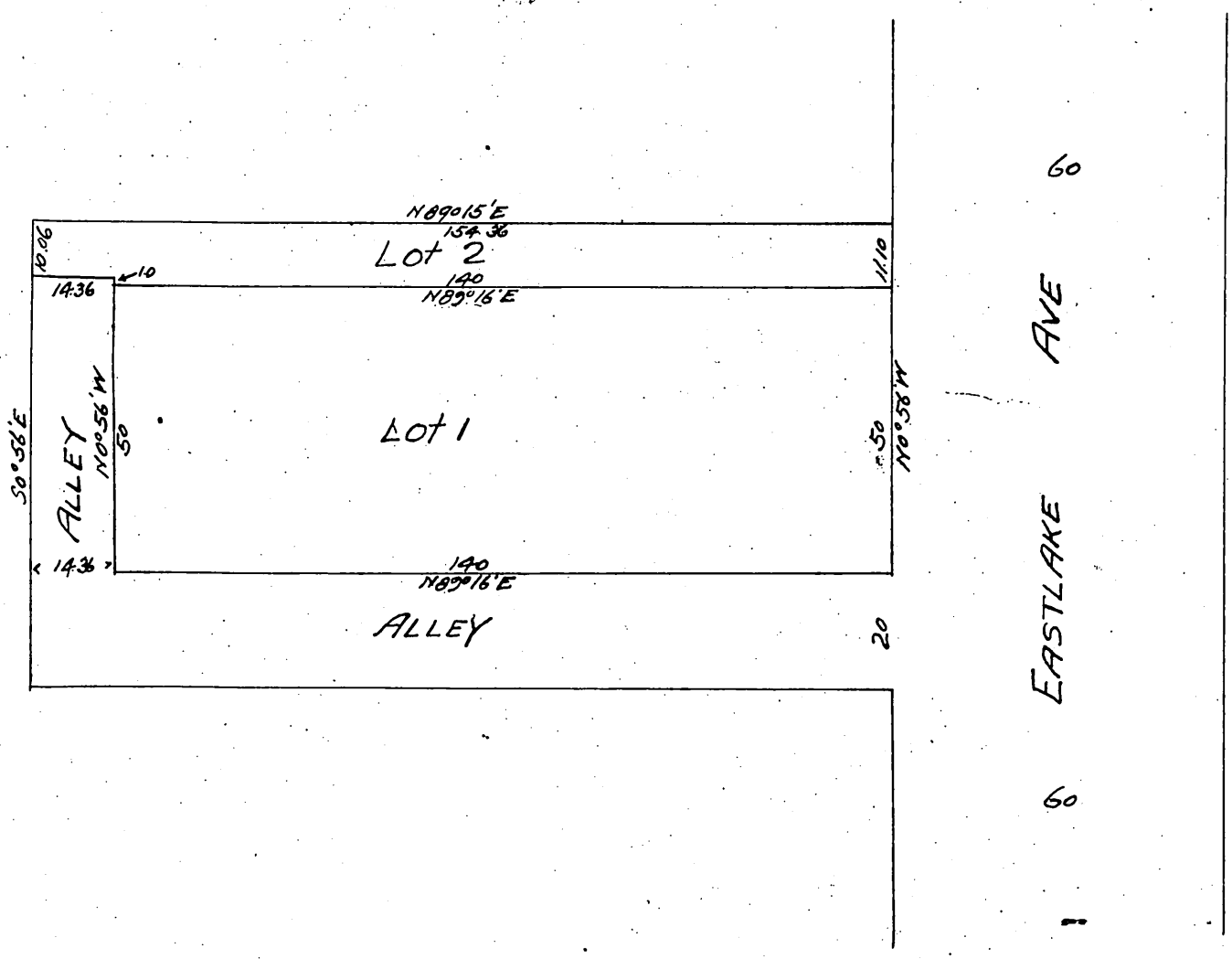
of Lots 8 and 9 in Lot 4 BK 35

Terminus Homestead Tract,

as recorded in Misc. Records Book 60 Page 62

Los Angeles County

Scale 30ft = 1 in.



and alleys as shown on this map

and dedicate for public use the streets

Proprietor S. B. Weller.

A full, true and correct copy of the original,
Recorded Aug 27, 1897 at 2 min past 4 P.M.
at request of S.B. Weller.

E. C. Hodgman County Recorder.
By E. T. Wright Co. Surveyor.