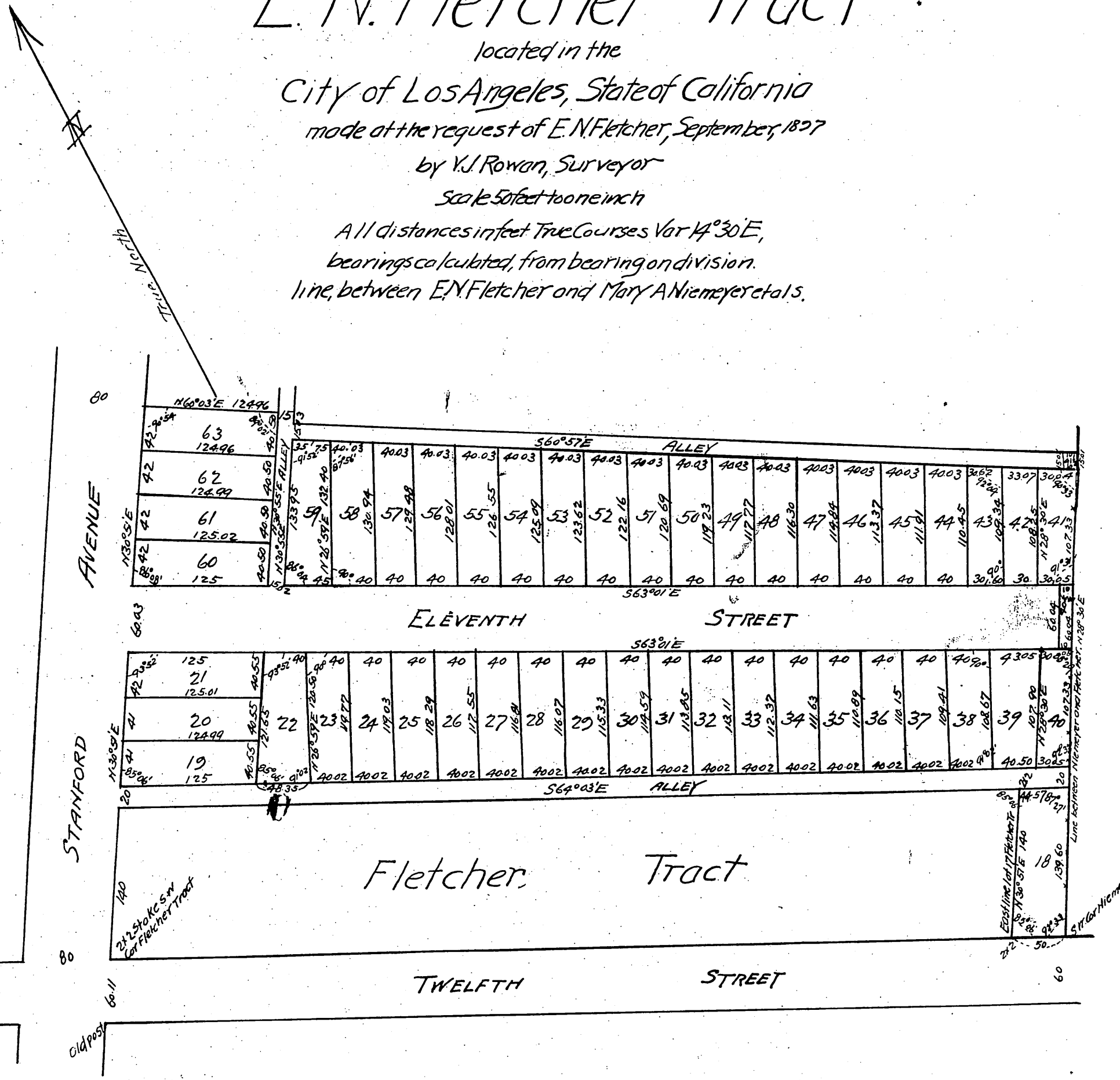


Map of part of the E. N. Fletcher Tract

located in the
City of Los Angeles, State of California
made at the request of E. N. Fletcher, September, 1897
by V. J. Rowan, Surveyor
Scale 50 feet to one inch

All distances in feet True Courses Var $14^{\circ}30'E$,
bearings calculated, from bearing on division
line, between E. N. Fletcher and Mary A. Niemeyer et al's.



owner E. N. Fletcher.

A full, true and correct copy of the original,
(Scale reduced to 100 ft to 1 in)
Recorded Sept 8 1897 of 59 Min Post 4 P.M.
at request of E. N. Fletcher.
E. C. Hodgman County Recorder.
By E. T. Wright Co Surveyor.