

Map of
Resubdivision of part of
L.L. Ferry's Subdivision

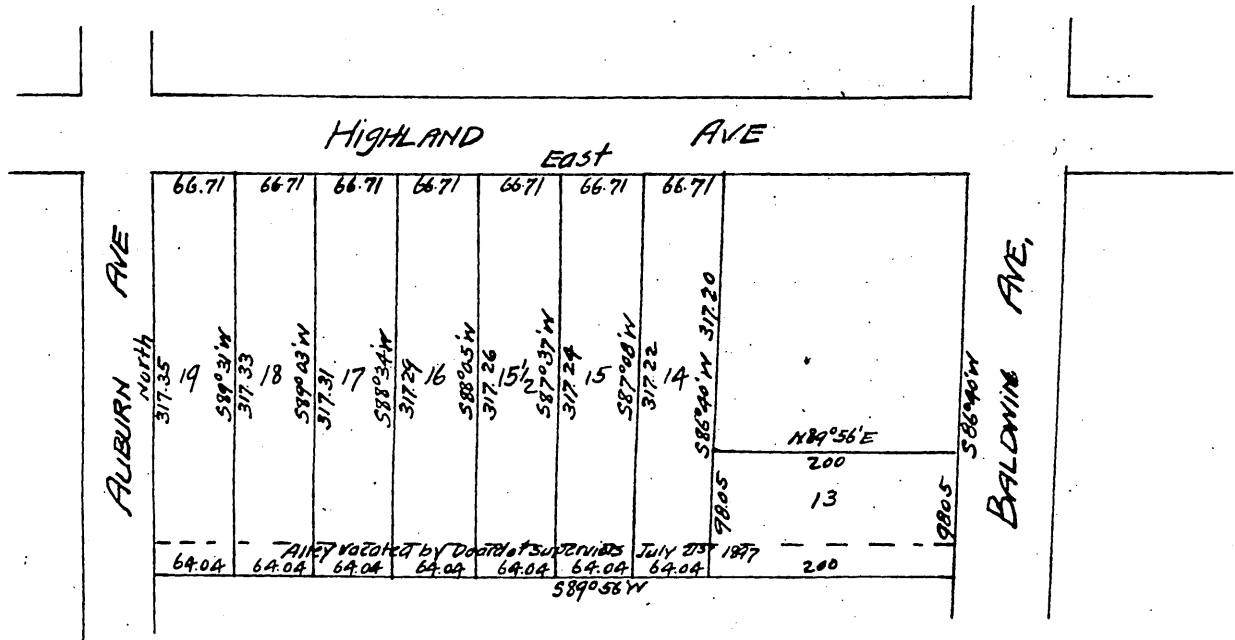
of the central portion of lot 14

Sierra Madre Tract

as per map recorded in Book 30, Page 15 Miscellaneous Records
Los Angeles Co, California.

Also showing vacation of the Alley running from Auburn Ave
easterly to Baldwin Ave, as ordered by the Board
of Supervisors at its meeting of July 21st 1897,

Scale 100 ft = 1 in



and dedicate for public use the streets and alleys as shown on this map,
Proprietor (Saraetta Ballou,

A full, true and correct copy of the original.
(Scale reduced to 150 ft = 1 in)
Recorded Sept 13 1897 at 20 min past 3 PM
at request of Saraetta Ballou

E. C. Hodgman, County Recorder.
By E. T. Wright Co Surveyor.