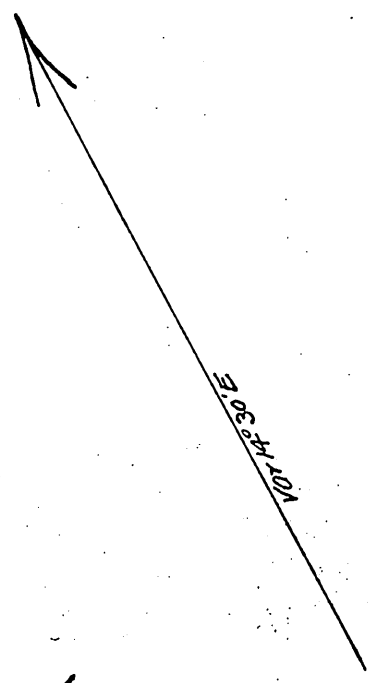


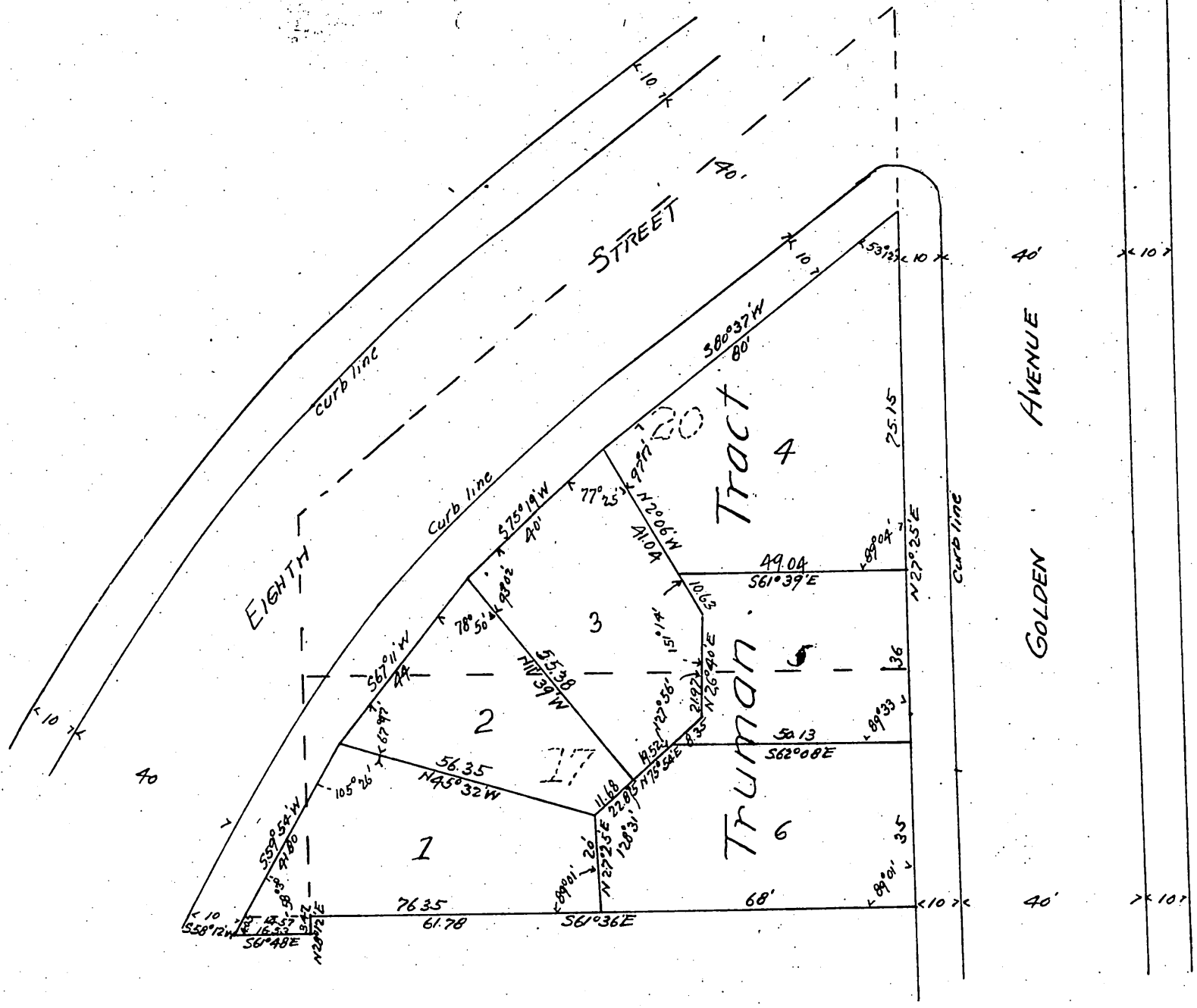
Plat of the A. N. Gibson Tract

Los Angeles, Cal

A resubdivision of Lots 17 and 20 of the
Truman Tract as per map recorded in
Book 5 page 405 of Misc Rec, and a
portion of the Kennedy Tract
Surveyed Oct, 1896,
by GMD Fisher Surveyor
Scale 20ft to one inch.



Kennedy Tract



and dedicate for public use the streets and alleys as shown on this map.
Anna N. Gibson J. R. Nemberry S. J. Arthur.

a full true and correct copy of the original,
(Scale reduced to 30 ft to 1 inch.)
Recorded Sep 22, 1897 at 15 Min past 11 a.m.
at request of A. N. Gibson.
E. C. Hodgman County Recorder
By E. T. Wright Co Surveyor.