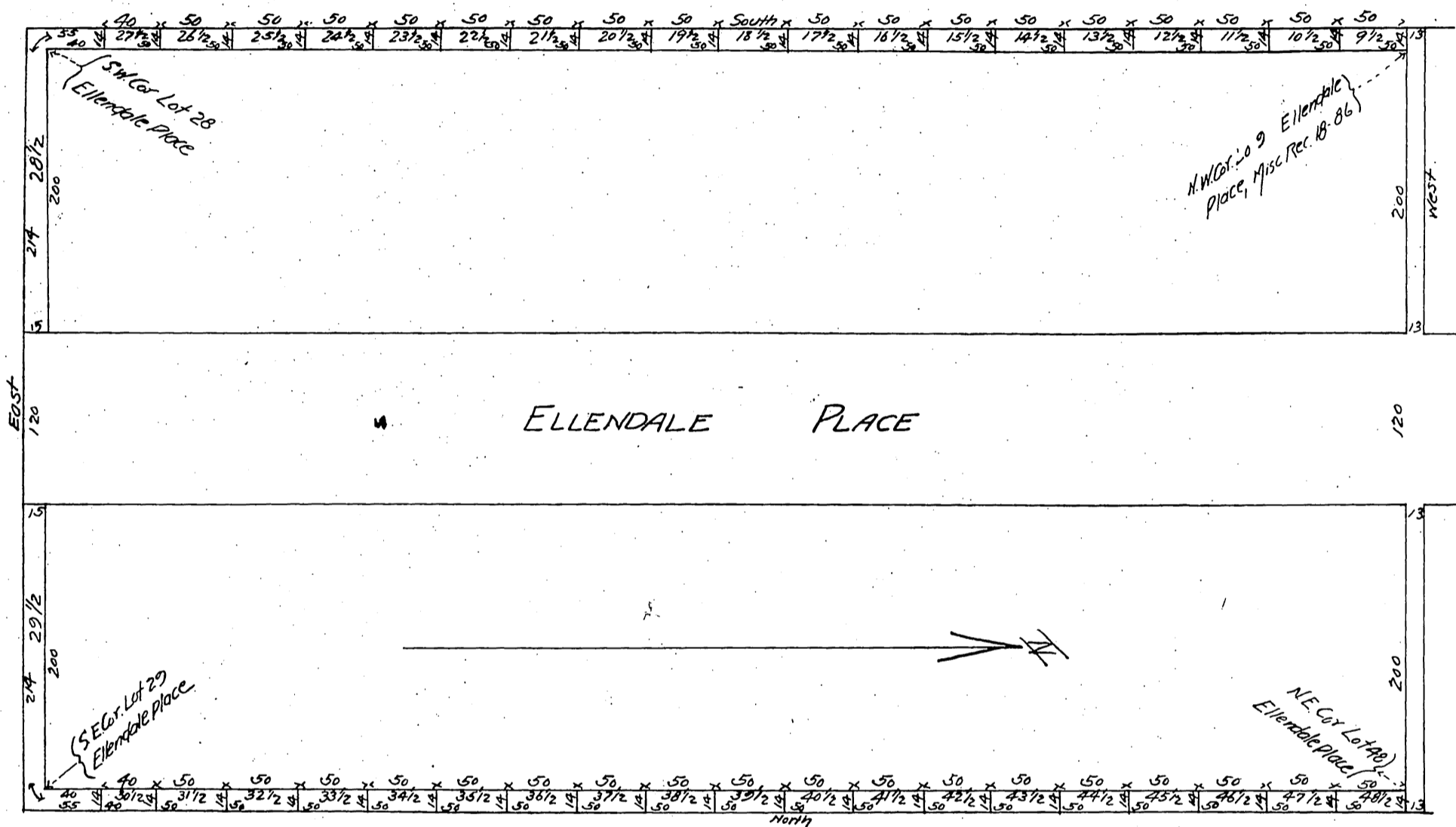


Bowker's Addition
to
Ellendale Place
Los Angeles Co., Cal.



alleys as shown on this map

and dedicate for public use the streets and

Ellen S. C. Bowker by H. M. Bowker her attorney in fact.

A full, true and correct copy of the original.
(Scale 100 feet to one inch)
Recorded Sept 25 1897 at 54 min past 2 P.M.
at request of T. I. and T. Co

E. C. Hodgman County Recorder.
By E. T. Wright Co Surveyor.