

Map of Netzley Addition

to the Town-Site of Covina

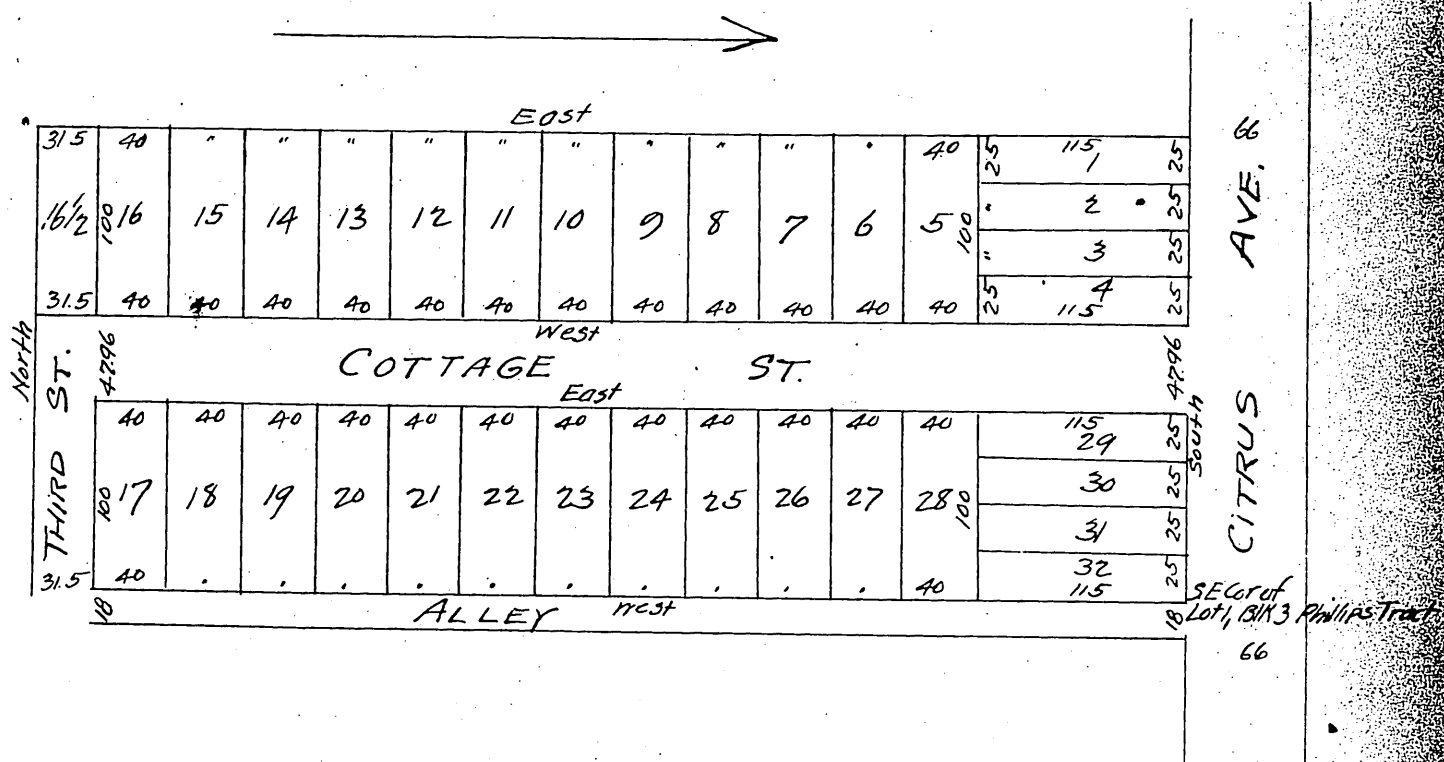
Los Angeles County, State of California

being a subdivision of the south one third of Lot one

Block three of the Phillips Tract in Rancho La Puente

Surveyed Dec, 1897 by W.E. Mount, C.E., Lordsburg Col.

Scale 50 feet = one inch,



on this map

and dedicate for public use the streets as shown
Proprietor { S. A. Overholtzer,

A full, true and correct copy of the original.
(Scale reduced to 100 feet to 1 inch)
Recorded Jan 12, 1898 at 9 min past 9 a.m.
at request of Covina Bank.

E.C. Hodgman County Recorder
By E.T. Wright Co Surveyor.