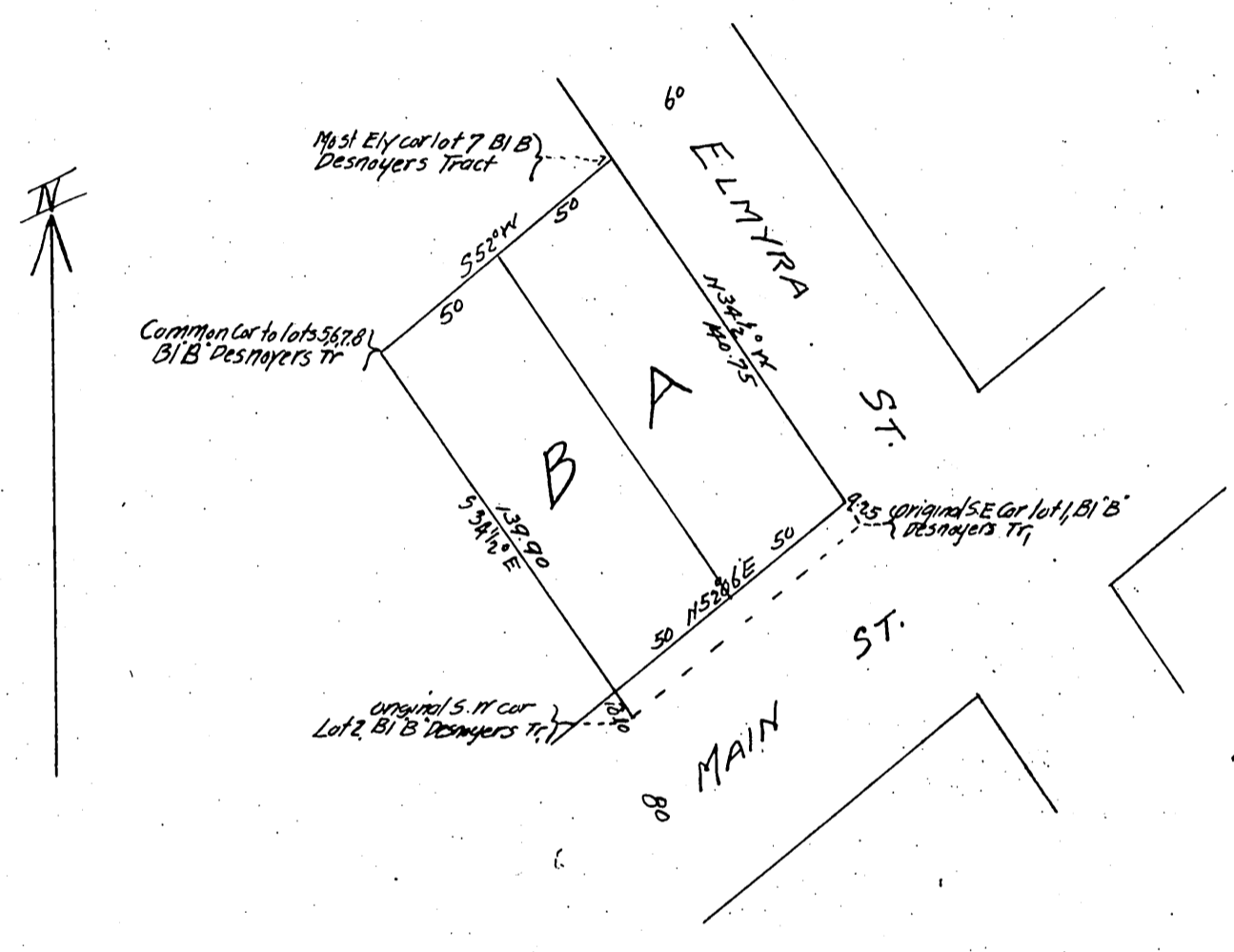


C. Ganahl's Subdivision  
 of Lots 1, 2, and 5 in Block "B" of the  
 Desnoyers Tract,  
 As per map recorded in Book 3, pages 62 and 63,  
 Miscellaneous Records,  
 Los Angeles, Cal.



corner C. Ganahl.

A full, true and correct copy of the original  
 (Scale reduced to 60 ft. = 1 inch)  
 Recorded Jan 19 1898 at 9 min past 9 A.M.  
 at request of C. Ganahl

E.C. Hodgman Co Recorder  
 By E.T. Wright Co Surveyor