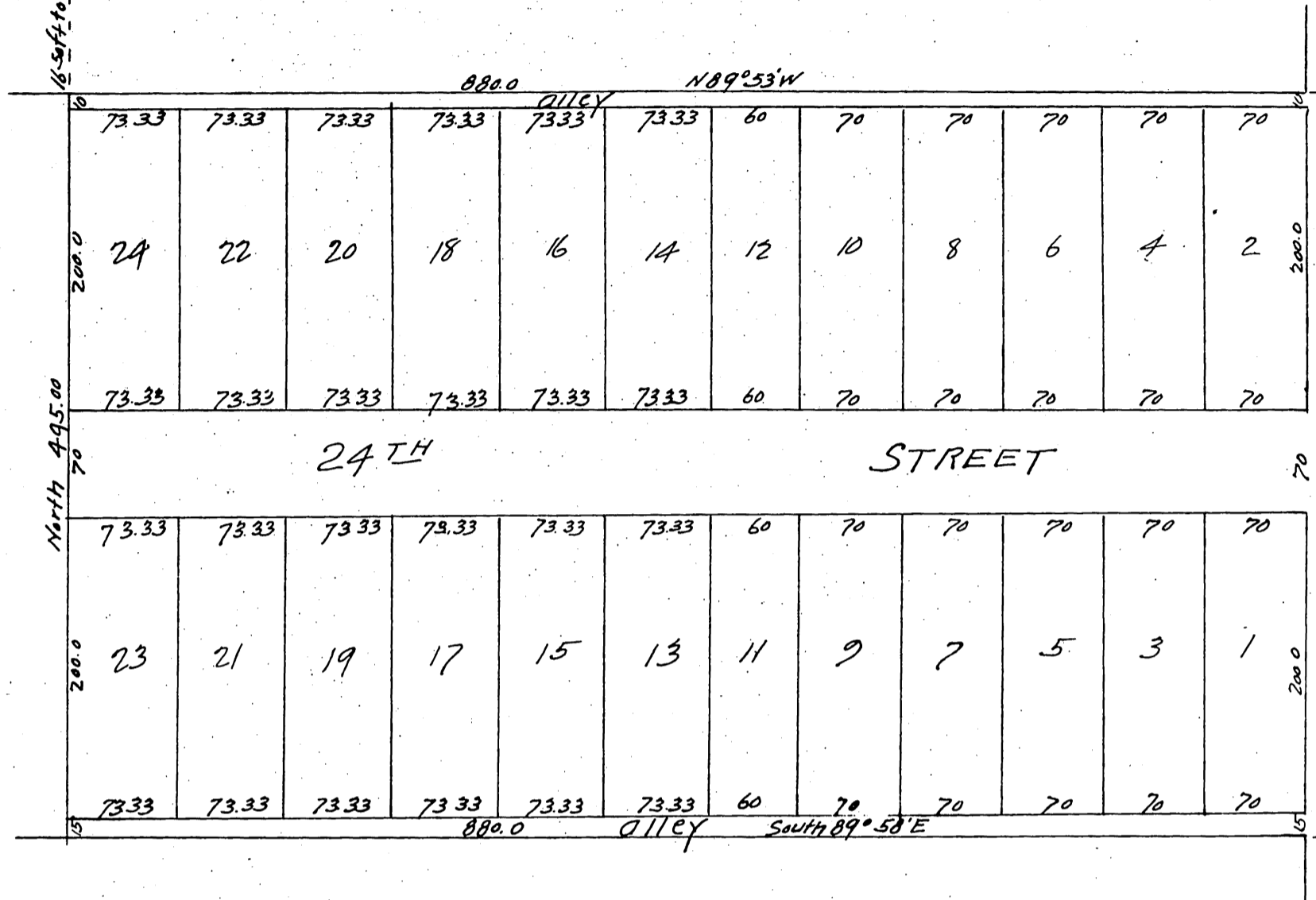


Map of the Grand View Heights Los Angeles City, Cal.

being a subdivision of 10 acres in the SE 1/4
of the SE 1/4 of Section 35, T. 1. S. R. 14. W. S. B. M.
Surveyed July 19th 1897, by Pillsbury and Skinner,
scale 50ft = 1 in.



Proprietors { Sarah Smith Brunner, William Benz, Esther Piper
 Henry C. Brunner, Charles F. Piper, by William Benz,
 Their attorney in fact.

A full, true and correct copy of the original.
 (Scale reduced to 100 feet to one inch.)
 Recorded Feb 10, 1898 at 15 min Past 2 P.M.
 at request of S.M. Brunner.

E.C. Hodgman Co Recorder
 By E.T. Wright Co Surveyor