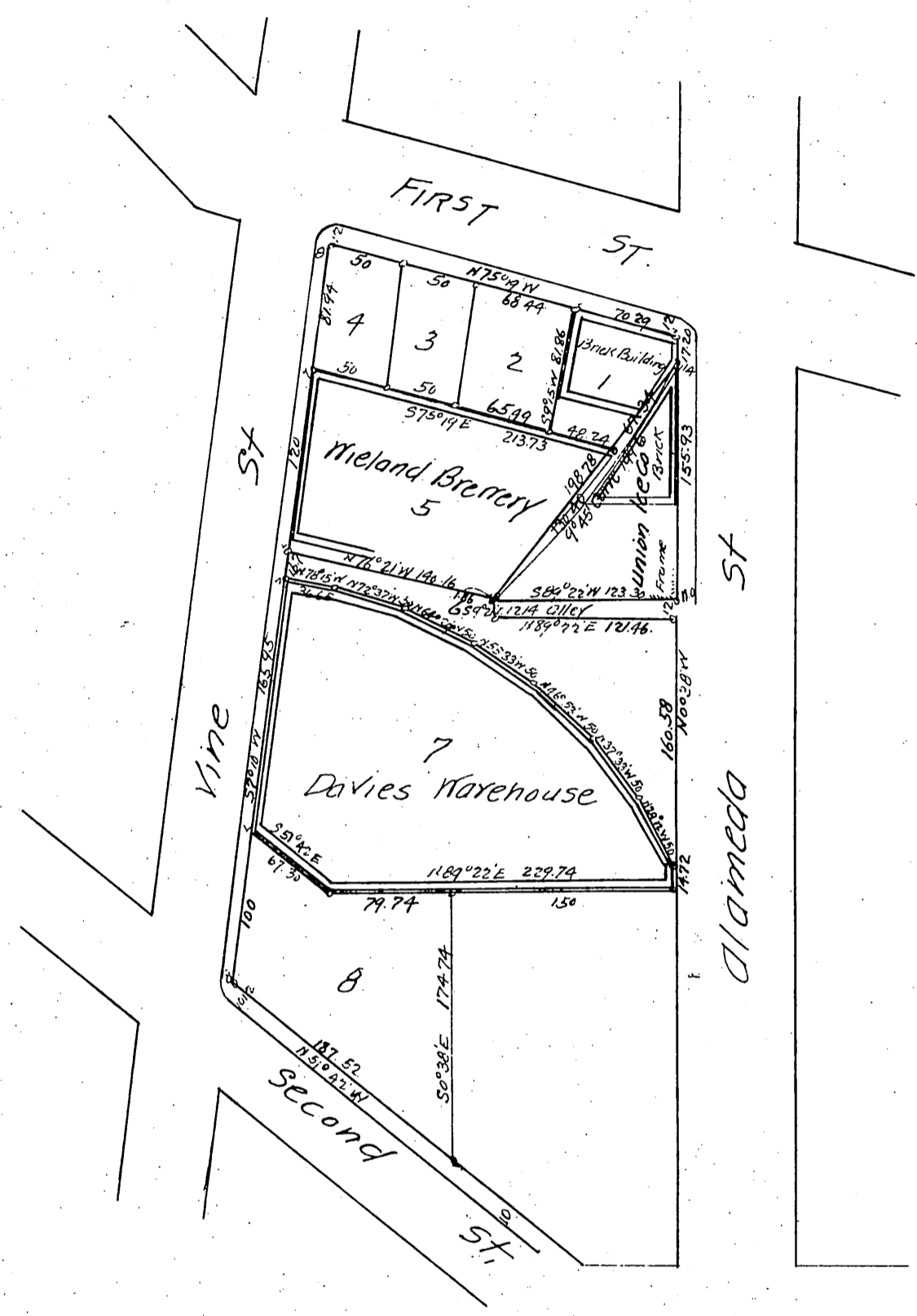


Subdivision of Block A of J. M. Davies Tract

Los Angeles City, Cal,
Compiled from surveys of
J. H. Dockweiler and Wright & Nicholson
Feb. 1898,
Scale 40ft to 1 in,



owner James M. Davies.

A full true and correct copy of the original.
(Scale reduced to 100 feet to 1 inch)
Recorded Feb 26, 1898 at 10 min past 3 P.M.
at request of J. M. Davies

E. C. Hodgman County Recorder.
By E. T. Wright Co Surveyor.