

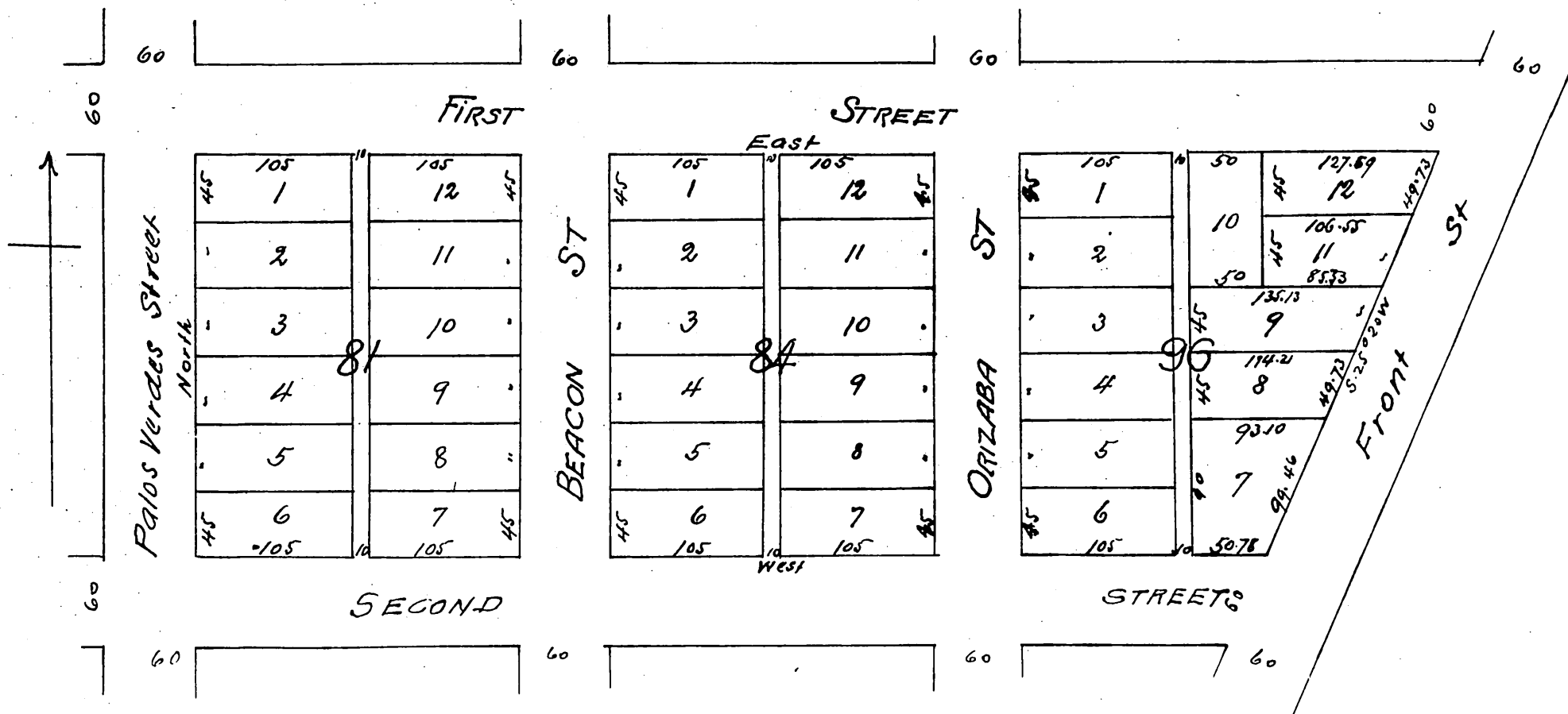


# Peck's Subdivision of Blocks 81-84-96 of the City of San Pedro

Surveyed by G.I. Goucher

March 1897

Scale 100 feet to one inch



Owner  
Geo. H. Peck Jr.

A full true and correct copy of original  
recorded Oct 6 1897 at 3 min pa sdcm at request  
of G. Peck

E.C. Hodgman & Co. Rec.  
by E.T. Wright Co Sur.