

Map of the

J. G. McDonald Tract

located in the

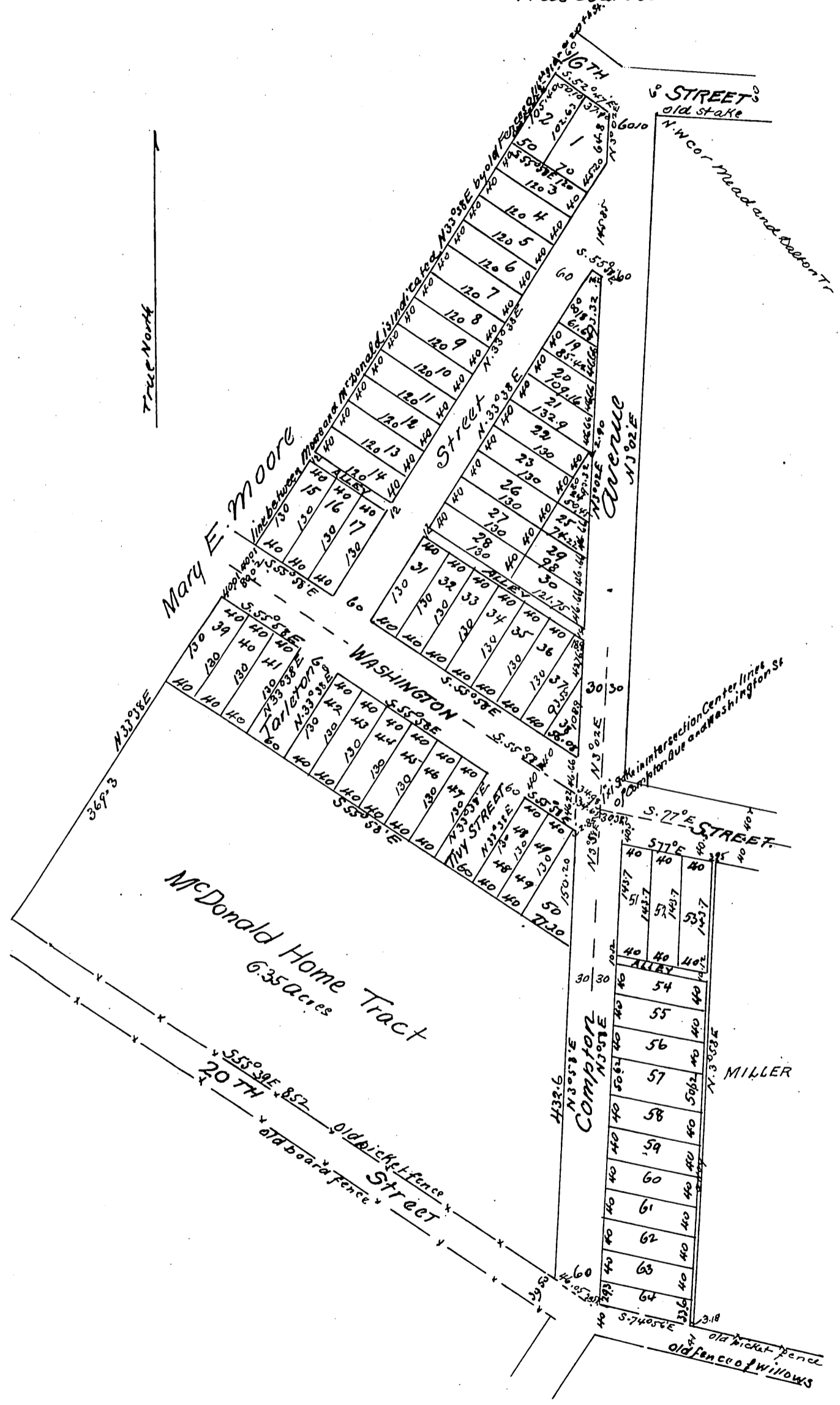
City of Los Angeles State of California

Surveyed at the request of J. G. McDonald

in November 1897 by V. J. Rowan Surveyor

Scale 80 feet to one inch

True Courses



Owner J. G. McDonald

A full true and correct Copy of the original
 (Scale reduced to 150 ft to 1 inch)
 Recorded Dec 1, 1897 at 59 Min past 2 pm
 at request of J. G. McDonald
 E. C. Hodgman & Co Rec
 by E. T. Wright & Co Surveyors