

Westacres Los Angeles

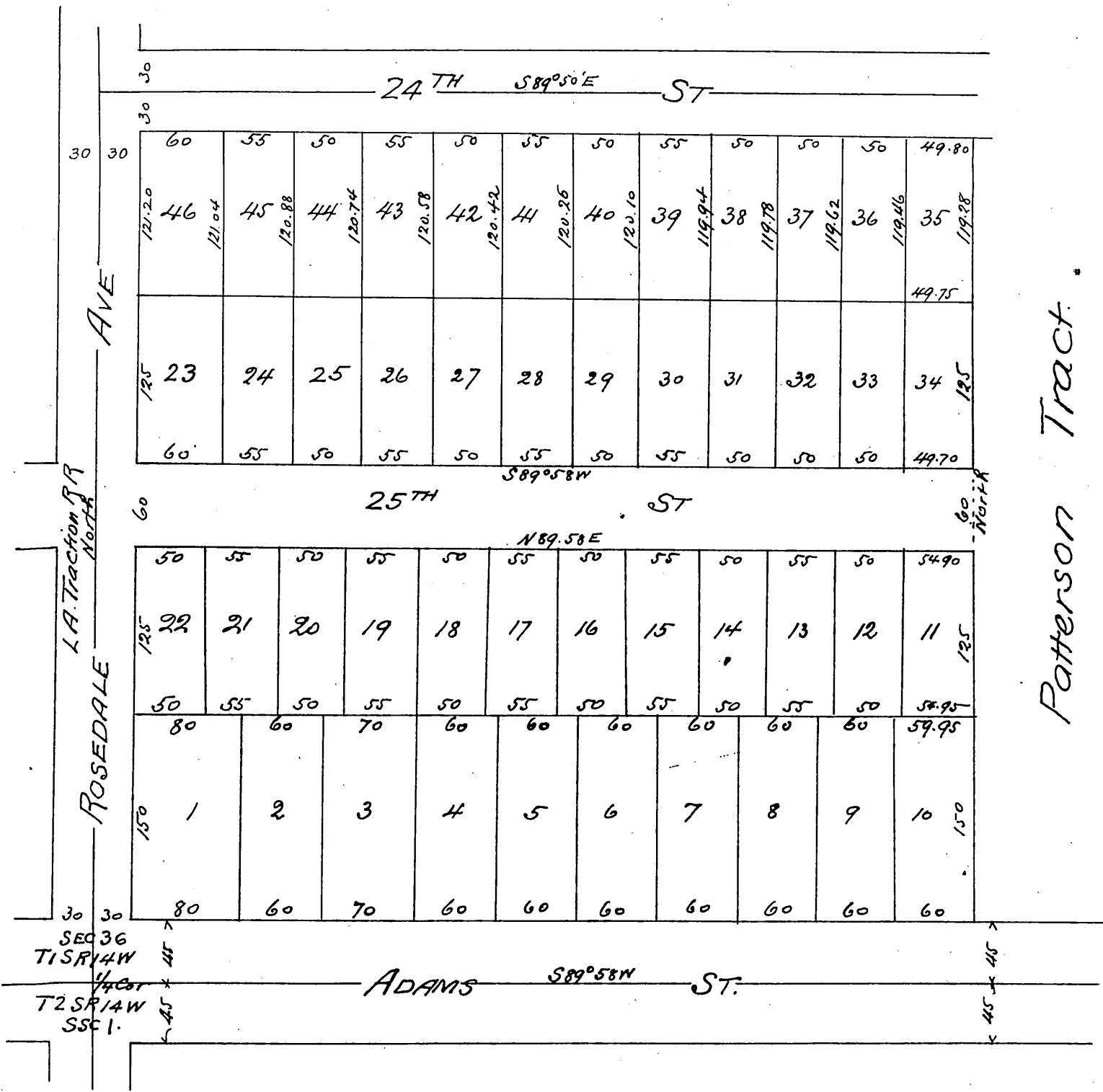
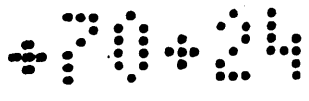
City Cal

being the SW 1/4 of SW 1/4 of SE 1/4
of Sec 36 T1 S R 14 W S B M

Subdivided at request of Wm F West.

by Wright & Nicholson Dec 4th 1897

Scale 50 ft = 1 inch



Owner
William Fitzherbert West.

A full true and correct copy of the original (scale reduced to 100 ft to inch)
Recorded Jan. 3. 1898 at 4 min past 2 p.m. at request of W. F. West.
E. C. Hodgman Co. Rec.
by E. T. Wright Co Sur.