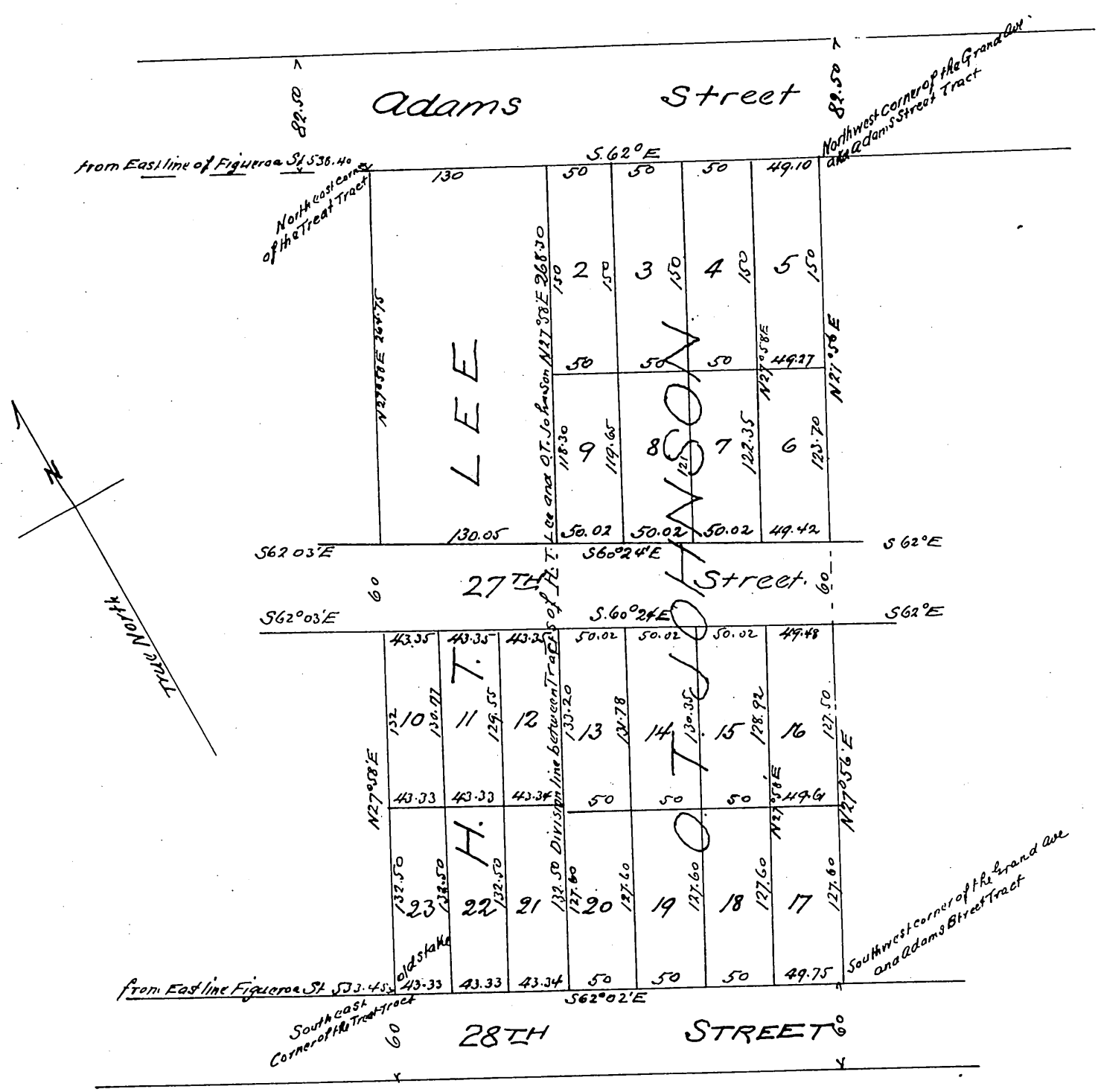




Map of the
 Lee and Johnson Tract
 a subdivision of a portion of Lot 4 Block 2 Hancock's Survey
 located in the
 City of Los Angeles County of Los Angeles State of California
 True Courses Variation 14°30' East
 Scale 60 feet to one inch
 All distances in feet
 Surveyed December 1897 by V. J. Rowan Surveyor



Owner
 H. T. Lee
 O. T. Johnson

A full true and correct copy of the original (scale reduced to 100 ft to 1 inch)
 recorded Jan. 26, 1898 at 4 min past 3 P.M. at request of H. T. Lee
 E. C. Hodgman Co Recorder
 by E. T. Wright Co. Sur.