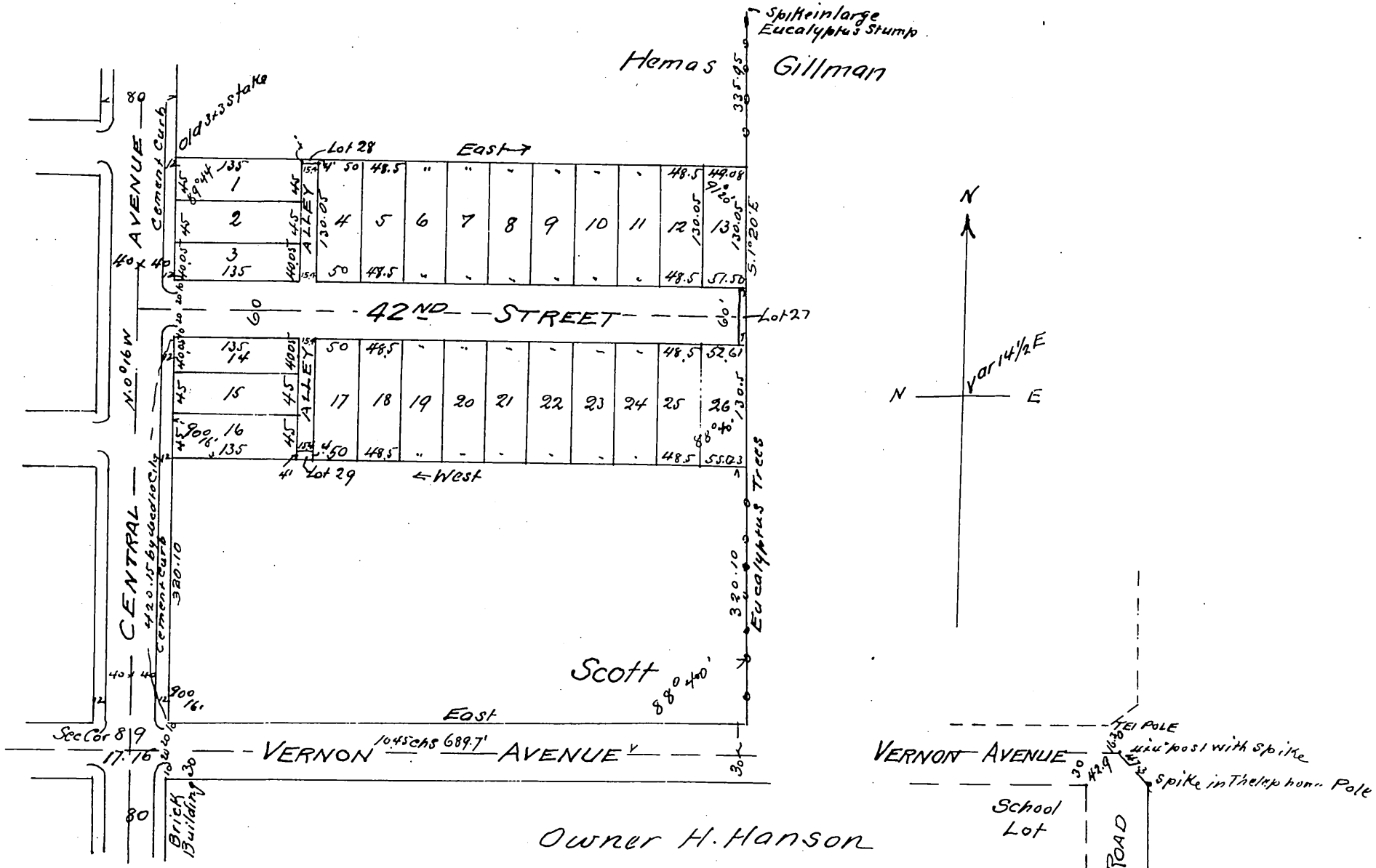


Plat Showing.

H. Hanson's Subdivision
 of a portion of the SW 1/4 of S.W. 1/4 Sec 9 T.2 S. R.13 W
 Central Ave and 42nd Street
 Los Angeles City
 Surveyed Feb 19th 1898 by Burr Bassell
 Scale 80' = 1"



Owner H. Hanson

A full true and correct copy of the original (scale reduced to 150 ft to one inch) Recorded March 2, 1898 at 34 min past 11 a.m. at request of H. Hanson
 E.C. Hodgman Co. Rec.
 by E.T. Wright Co. Sur.