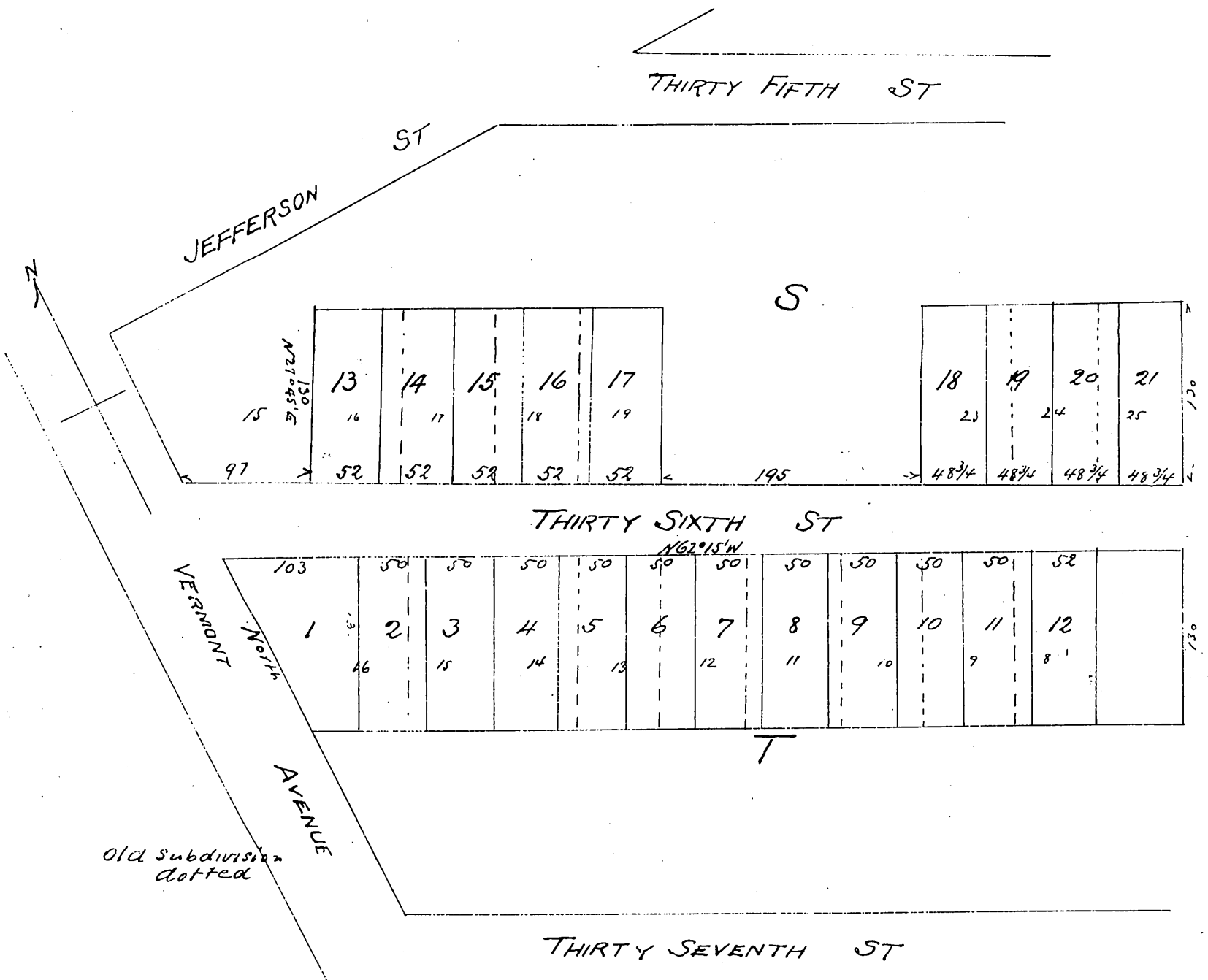


University of So California Re-subdivision of Lots 8,9,10,11,12,13,14,15,16 Block "T" & 16,17,18,19,23,24,25 "S" West Los Angeles Tract



OWNER
University of Southern California
by Gail B Johnson its secretary

A full true and correct copy of the original (Scale 100 ft to one inch)
Recorded Mar 7. 1898 at 54 Min past 11 A.M. at request of Johnson Keeny & Co.
E.C. Hodgman Co. Rec.
by E.T. Wright Co Sur.