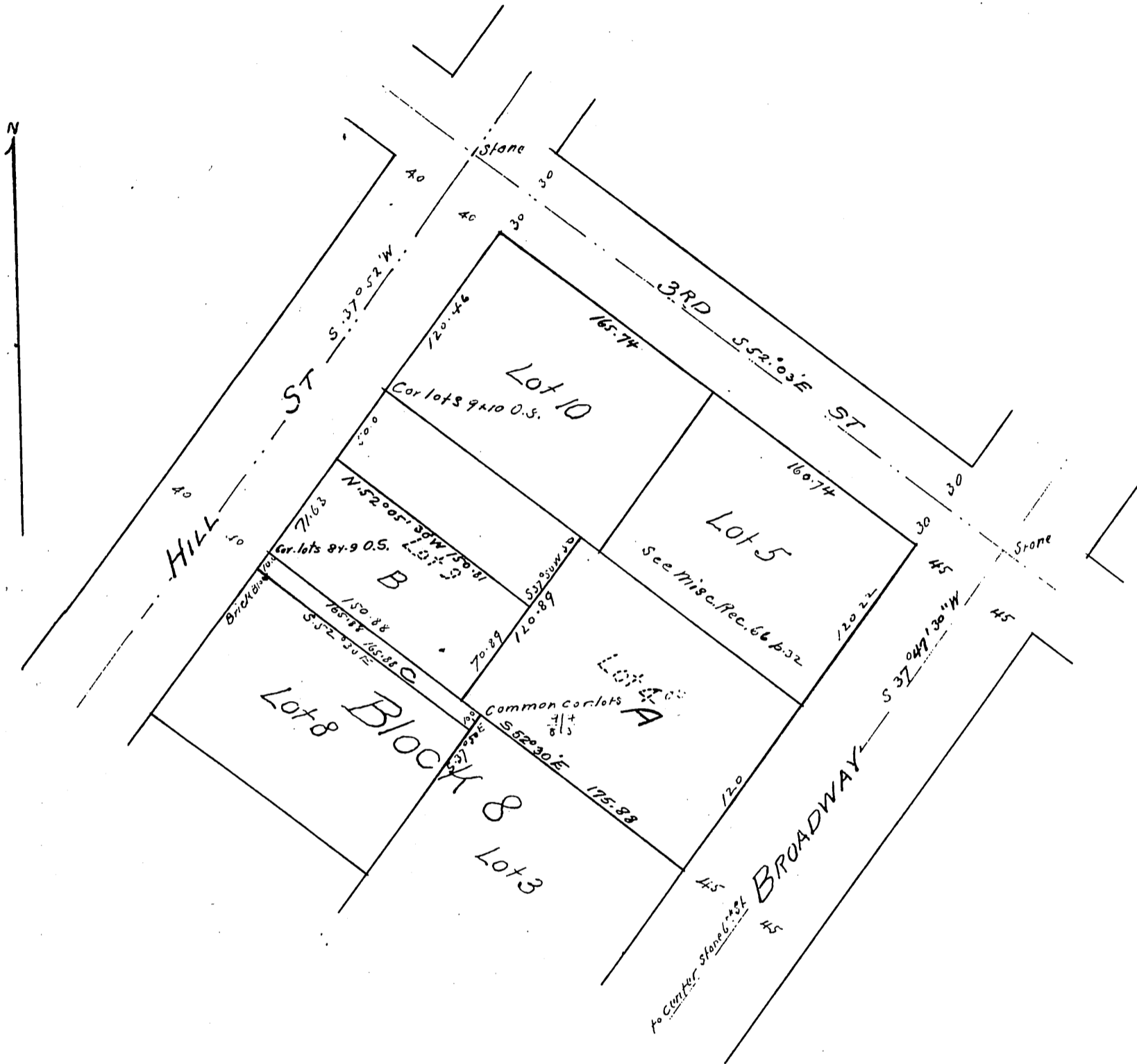


Homer Laughlin's Subdivision
 of a part of
 Block 8. Ords Survey
 Los Angeles City Cal
 Surveyed by H.J. Stocker Mar 22 1898
 Scale 40'=1"



Owner
 Homer Laughlin

A full true and correct copy of the original (scale reduced to 80ft to one inch)
 recorded March 25 1898 at 44 min past 11 a.m. at request of H. Laughlin
 E.C. Hodgman Co Rec.
 by E.T. Wright Co Sur.