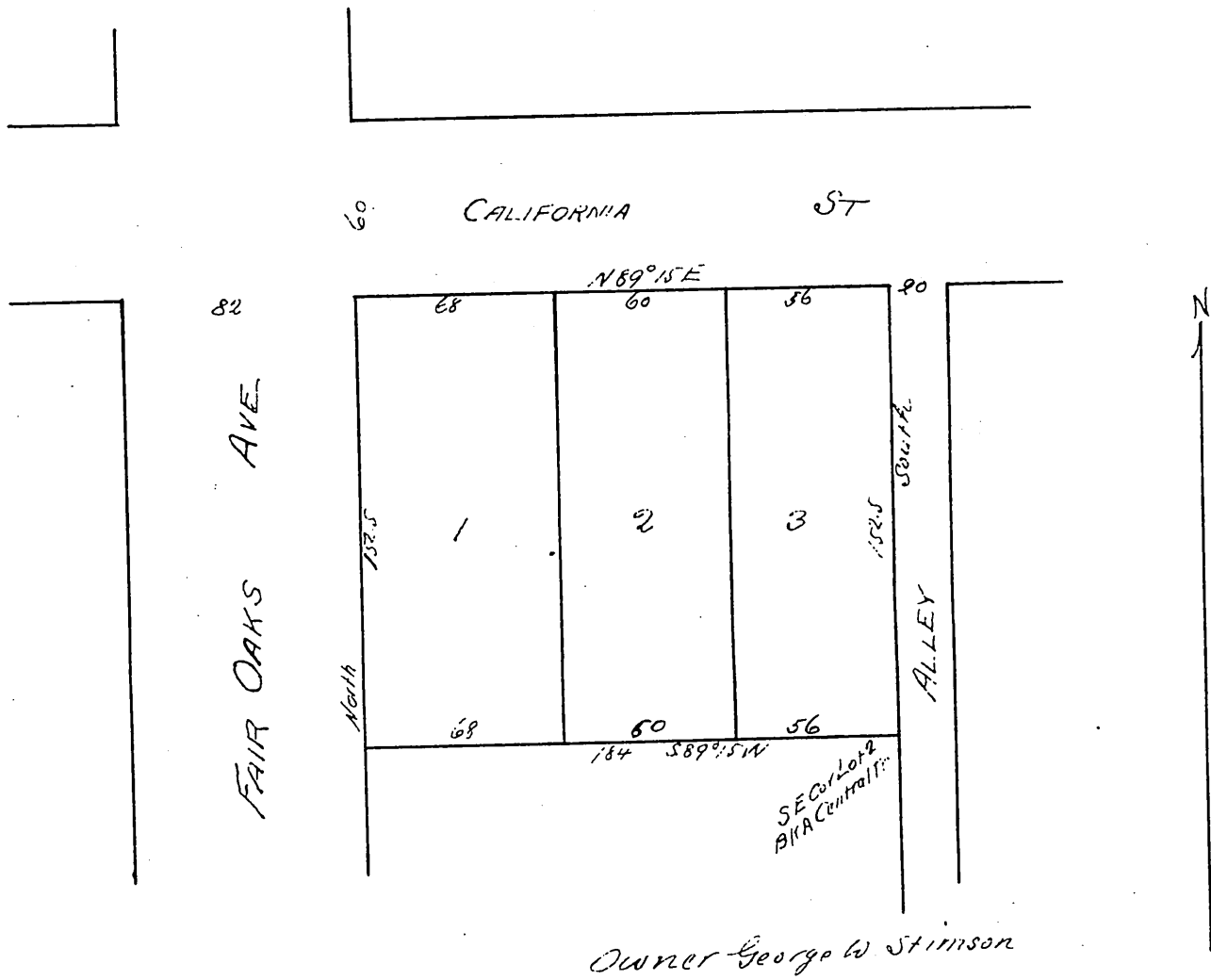


Geo W. Stimson's Re-subdivision of Lots 1 and 2 BKA. Central Tract Pasadena Cal

as per map recorded in Book 6 Page 121 Misc. Rec L. A. Co Cal.



A full true and correct copy of the original (Scale 50 ft to one inch)
Recorded Apr. 1 1898 at 39 min past 10 A.M. at request of G. W. Stimson

E. C. Hodgman & Co Rec
by E. T. Wright Co Sur