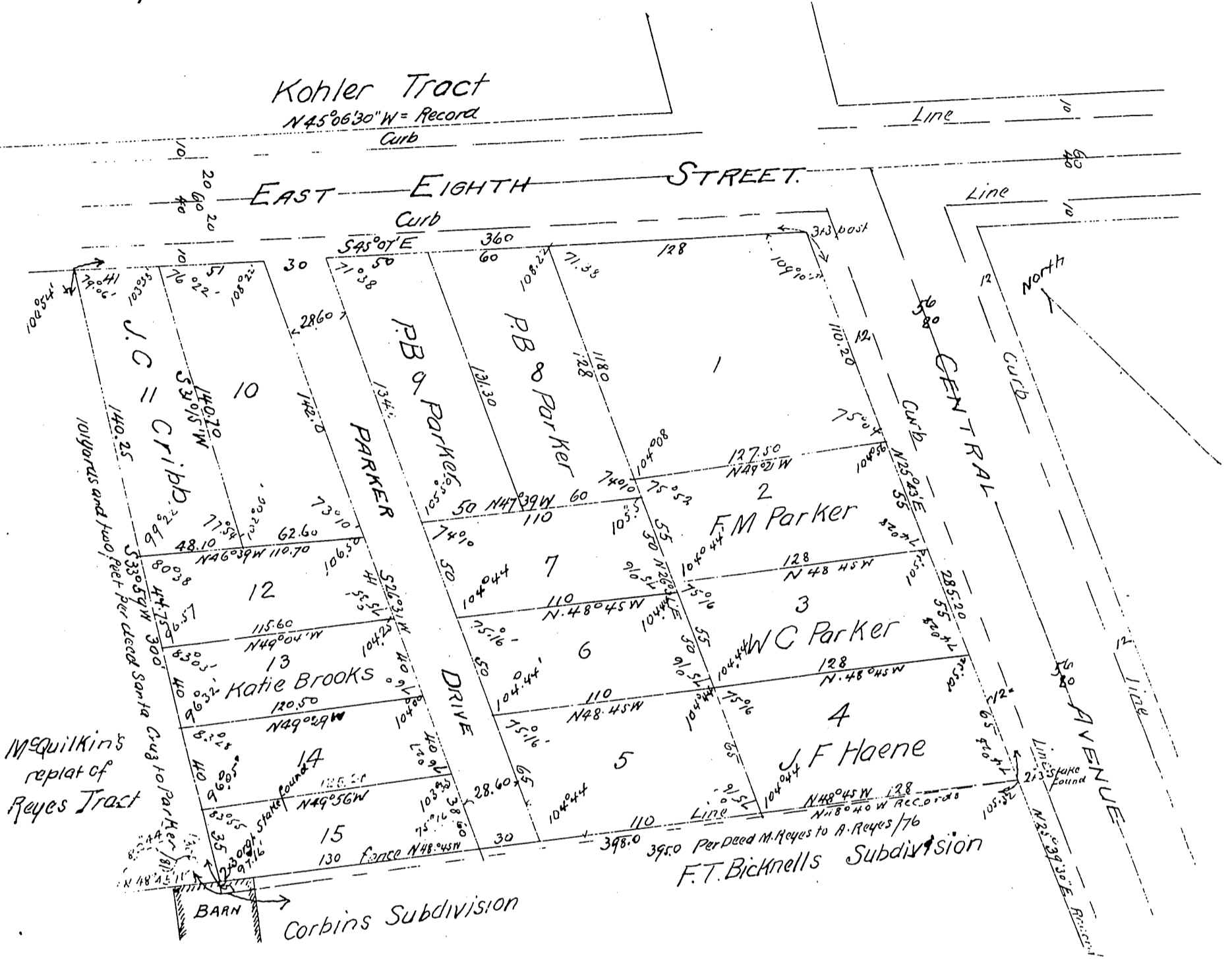


# J.B. Parker Subdivision

being a portion of the Reyes Tract  
situated in the City of Los Angeles  
and made at the request of J.B. Parker  
Survey made April 5<sup>th</sup> 1898  
by Thos H. James C.E. Licensed Surveyor  
Scale 40ft = one inch



A full true and correct copy of the original (scale reduced to 60 feet to one inch) Recorded April 14 1898 at 6 min past 10 a.m. at request of J.B. Parker  
E.C. Hodgman Co Rec  
by E.T. Wright Co Sur.

Owners:-  
John B. Parker - J. B. Parker  
Mary A. Parker - Mrs. Elizabeth Harris  
Katie Brooks - Mrs. Katie Brooks - John B. Harris  
J.B. Parker - Mrs. Barbara Parker