

Map showing  
all that portion of the  
Rancho San Vicente Y Santa Monica  
Known as the  
Villa Farms

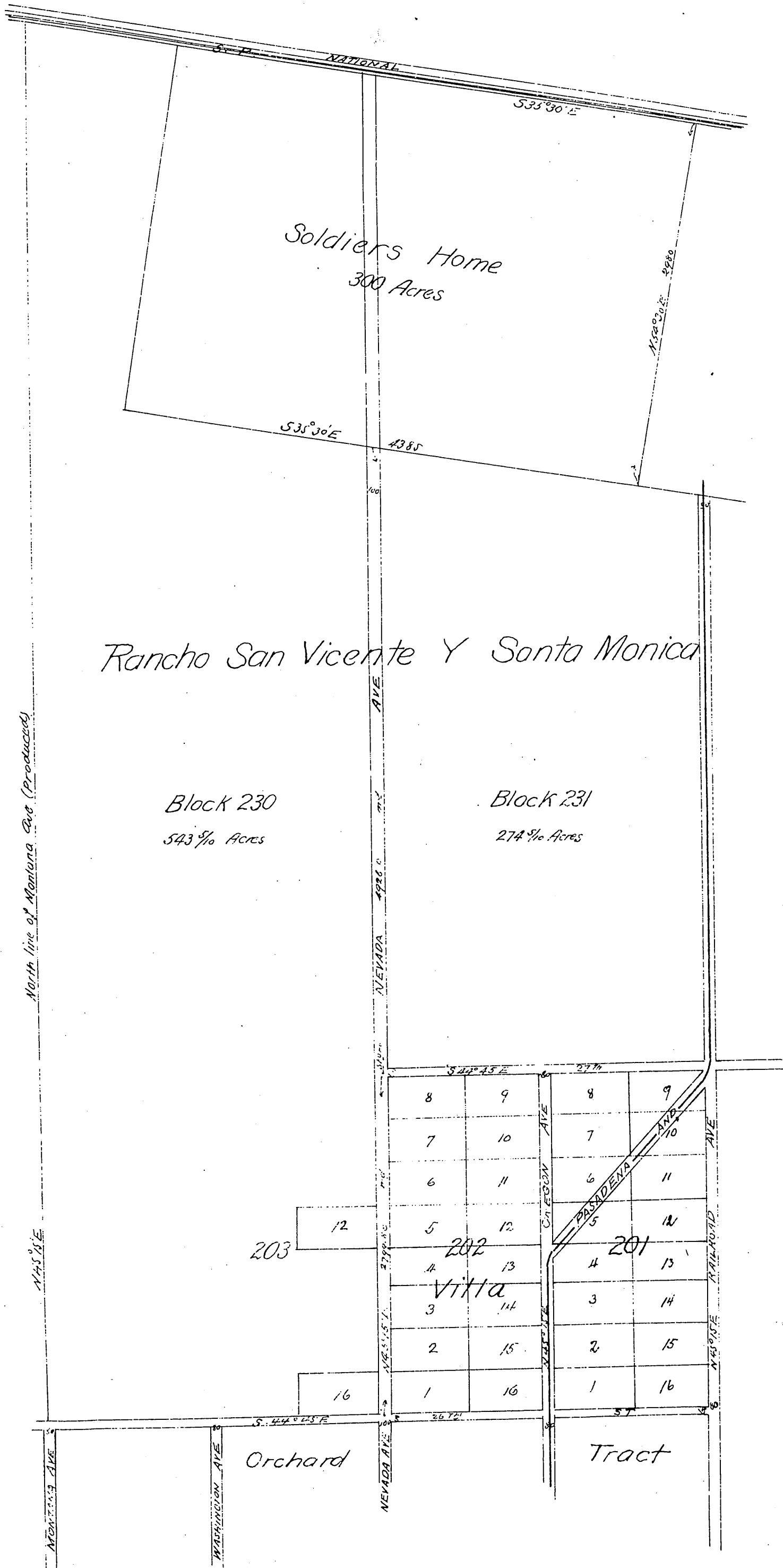
as vacated and being reverted to acreage by Order of the  
Board of Supervisors excepting Blocks 199, 200, 201 and  
Lots 12 and 16 of Block 203

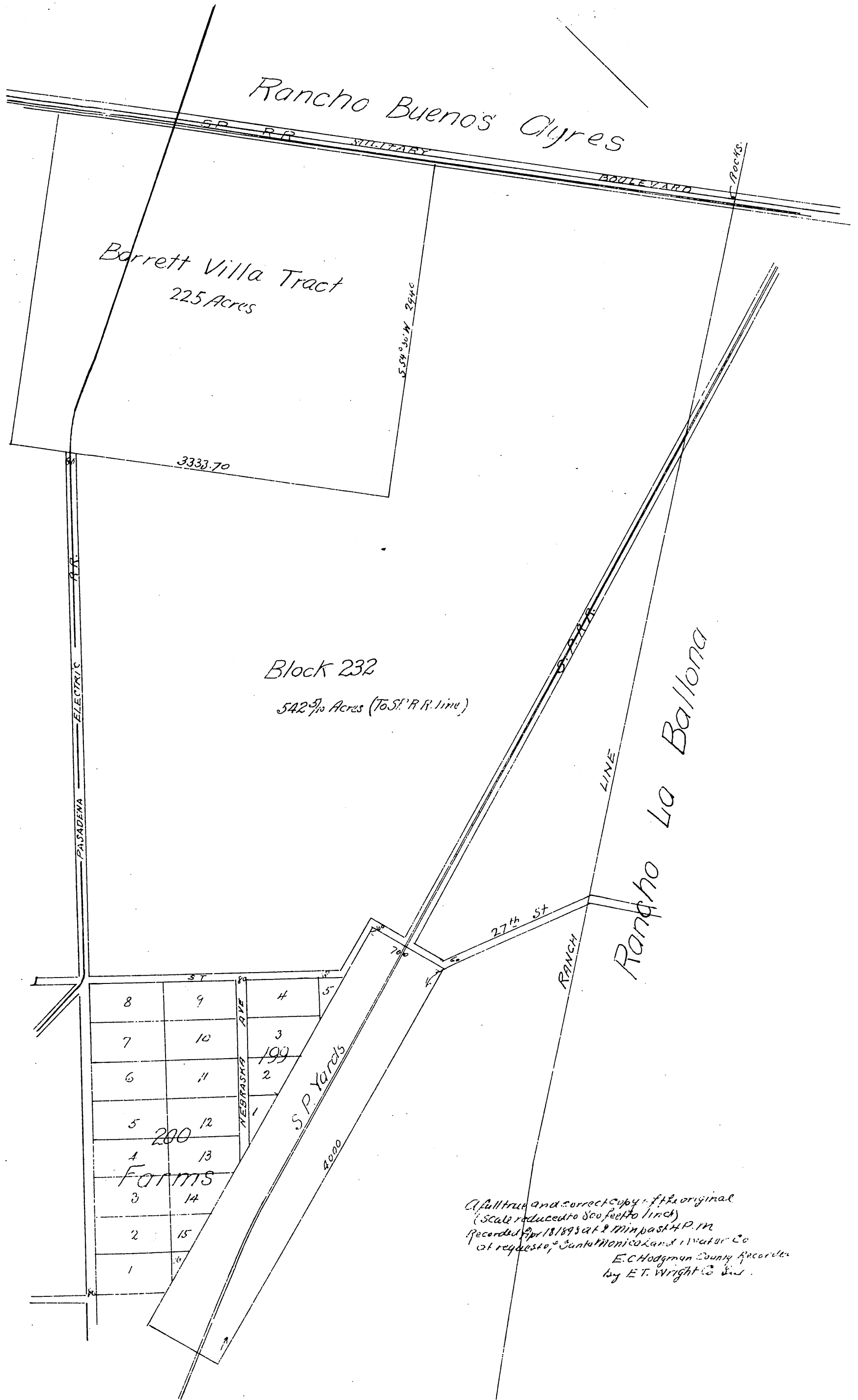
Made at the request of Robt F and Roy Jones Agents  
by Thos H. James C.E. Feb 1898  
Scale 600 ft = 1"

Road Book 5 page 302

March 23<sup>d</sup> 1898

In relocation of Certain Streets  
and Avenues in Rancho San Vicente }  
This being the time regularly set by order of this Board and publication  
of notice thereof for hearing the petition of Pacific Land Co et al <sup>therein</sup> Roy Jones appears for petitioners and is sworn  
and examined and no protest against the granting of said petition having been filed upon motion of Supervisor  
Davis duly seconded and carried it is ordered that the prayer of said petition be and the same is hereby granted  
except as to Nevada Avenue and it is further ordered Montana Avenue from 26<sup>th</sup> Street to the line of the  
San Jose Buenos Ayres, Washington Avenue from 26<sup>th</sup> Street to said line of said ranch, Oregon Avenue from  
27<sup>th</sup> Street to said ranch line, Railroad Avenue from westerly line of lands conveyed by John L. Jones and  
Arcadia B. de Baker to H.M. Sherman to said ranch line, Nebraska Avenue from 27<sup>th</sup> Street to said ranch line  
Dakota Avenue throughout its entire length, Texas Avenue throughout its entire length, Twenty Ninth Street  
throughout its whole length, Twenty Eighth Street throughout its entire length, Twenty Seventh Street from  
Montana Avenue to Nevada Avenue in Rancho San Vicente as shown on Map A accompanying said petition  
which said map was duly recorded in the records of Los Angeles County, in Book 3 at page 18 Miscellaneous  
Records, and the same are hereby vacated and abandoned and the land therein contained reverted  
to acreage conditioned upon filing for record by petitioners in the office of the recorder of said County of a  
certified copy of this order attached to a map showing all property as affected by the same.





A full true and correct copy of the original  
 (Scale reduced to 800 feet to 1 inch)  
 Recorded Apr 18 1893 at 9 min past 4 P.M.  
 at request of Santa Monica Land & Water Co  
 E. C. Hodgman County Recorder  
 by E. T. Wright Co. Sec.