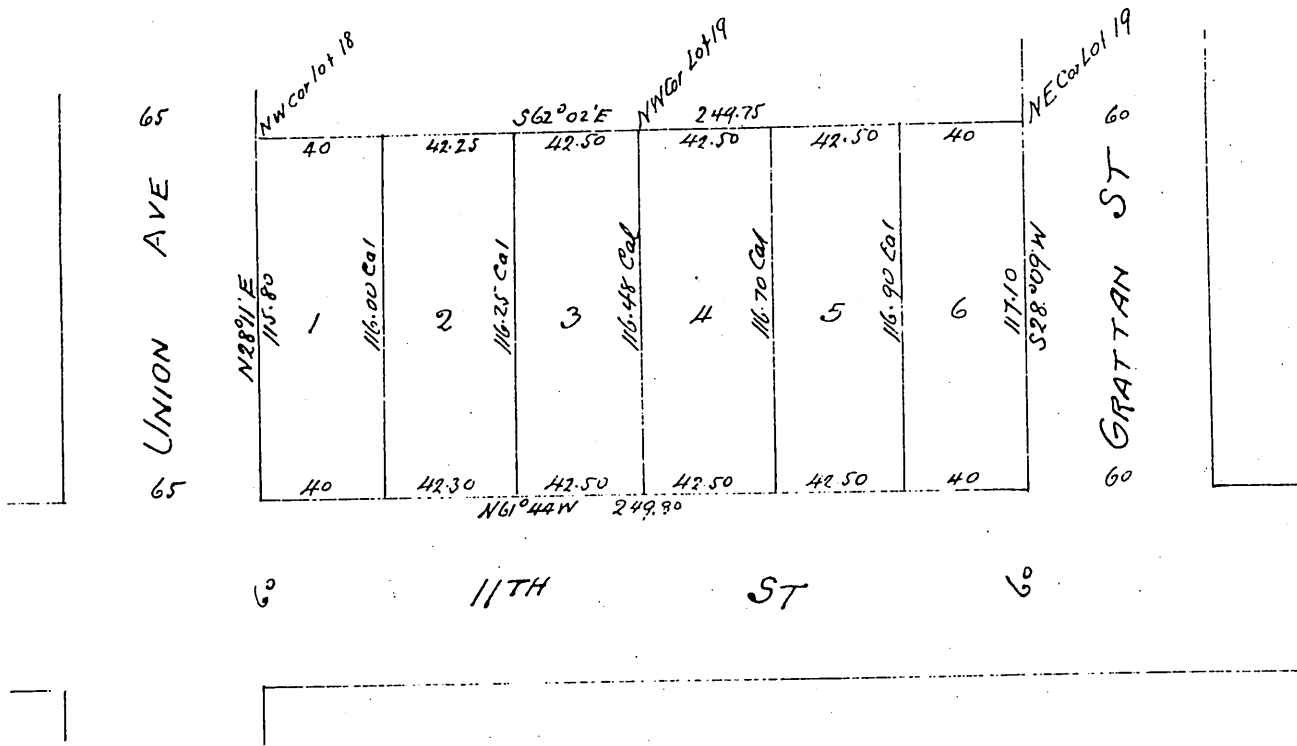


Map of

Anderson's Subdivision

of Lots 18, 19, 20 & 21 Block F Mrs Fitzgerald Tract
 as per Map recorded in Book 24 Pages 23 & 24 of Misc. Records
 of Los Angeles Co Cal. Also a strip of land lying be-
 tween said lots and the north side of Eleventh St
 Surveyed May 13th 1898 by Skinner & Miller
 Scale 30 ft = 1 in



Whereby certify that we are the proprietors of the property subdivided as shown by this map and further
 that we caused such subdivision and map to be made and dedicate for public use the streets and alleys
 as shown on this map

R. W. Poindexter
 J. S. Wadsworth

A full true and correct copy of the original
 (Scale reduced to 60 ft to 1 inch) recorded May 17th 1898
 at 51 min past 4 P. M. at request of Poindexter, Wadsworth &
 E. C. Hodgman's Rec.
 By E. T. Wright Co Sur.