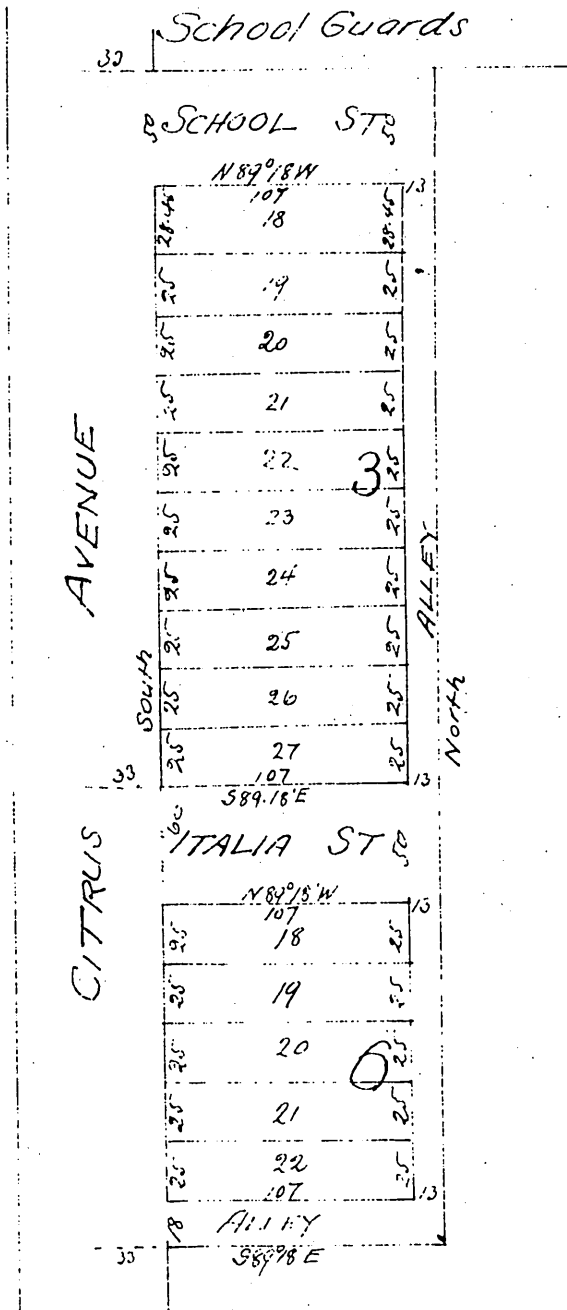


Map of the
Richmond Tract N^o 1
addition to the
Town of Covina
Los Angeles Co. Cal.



I hereby certify that I am the proprietor of the property subdivided as shown by this map, and further that I caused such subdivision and map to be made and dedicated for public use the streets and alleys as shown on this map.

Italia J. Cook

a full true and correct copy of the original 1 scale 80ft to 1 inch
recorded Jun 27, 1898 at 14 min 3/4 at 3 p.m. at request of I. J. Cook
E. C. Hodgman Co. Rec.
by E. T. Wright Co. Sur.

