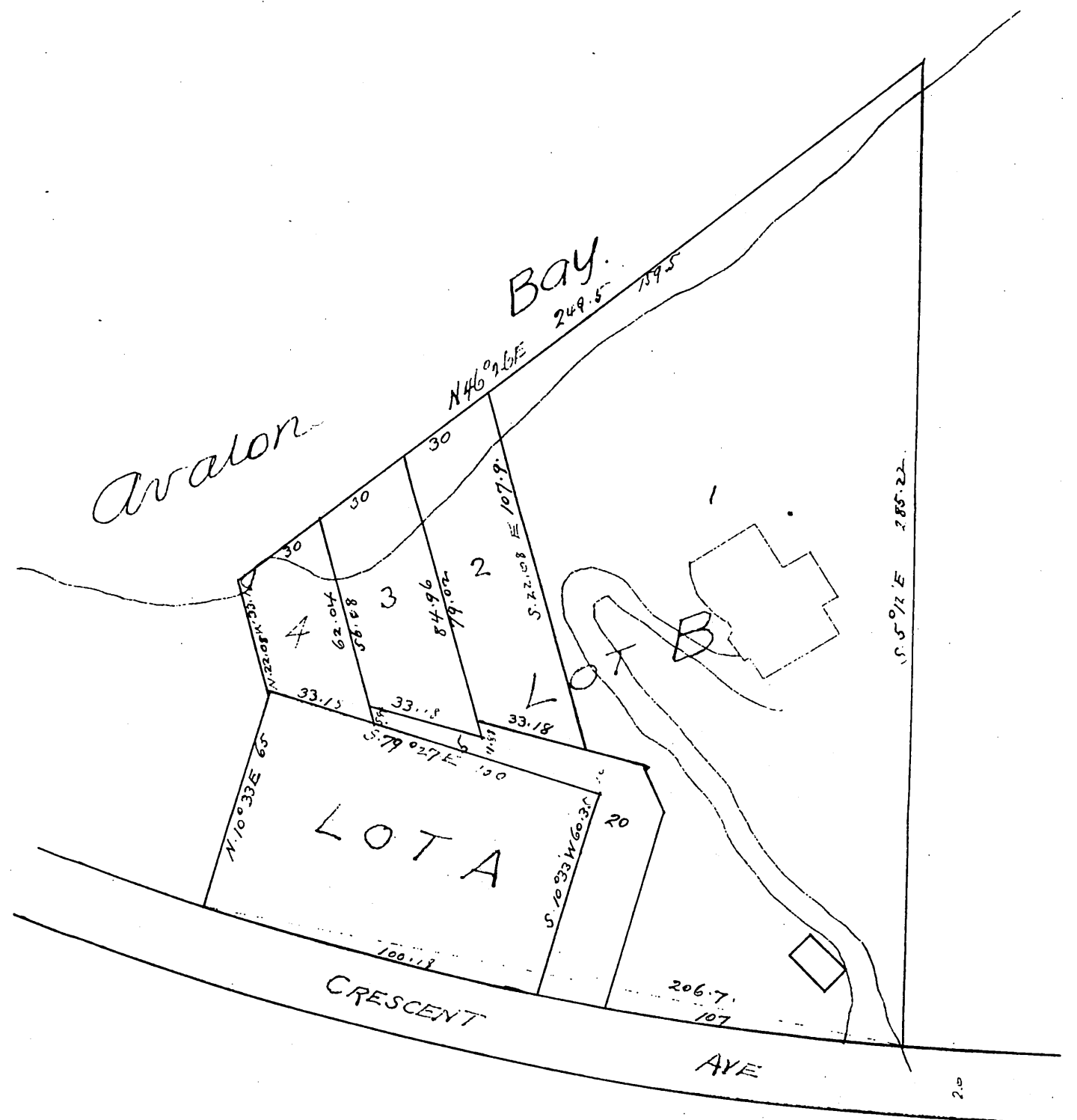


Gano's Subdivision
 of Lot B
 Town of Avalon
 Los Angeles Co. California
 Scale 40' = 1 in



I hereby certify that I am the proprietor of the property subdivided as shown by this map and further that I caused such subdivision and map to be made and dedicated for public use the street shown on this map.

Peter Gano

a full true and correct copy of the original recorded Jun 28 1898 at 11:00 AM at the County Clerk's Office of Los Angeles Co. Cal.

E. C. Hodgman, Rec
 by E. T. Wright Co. Sur.