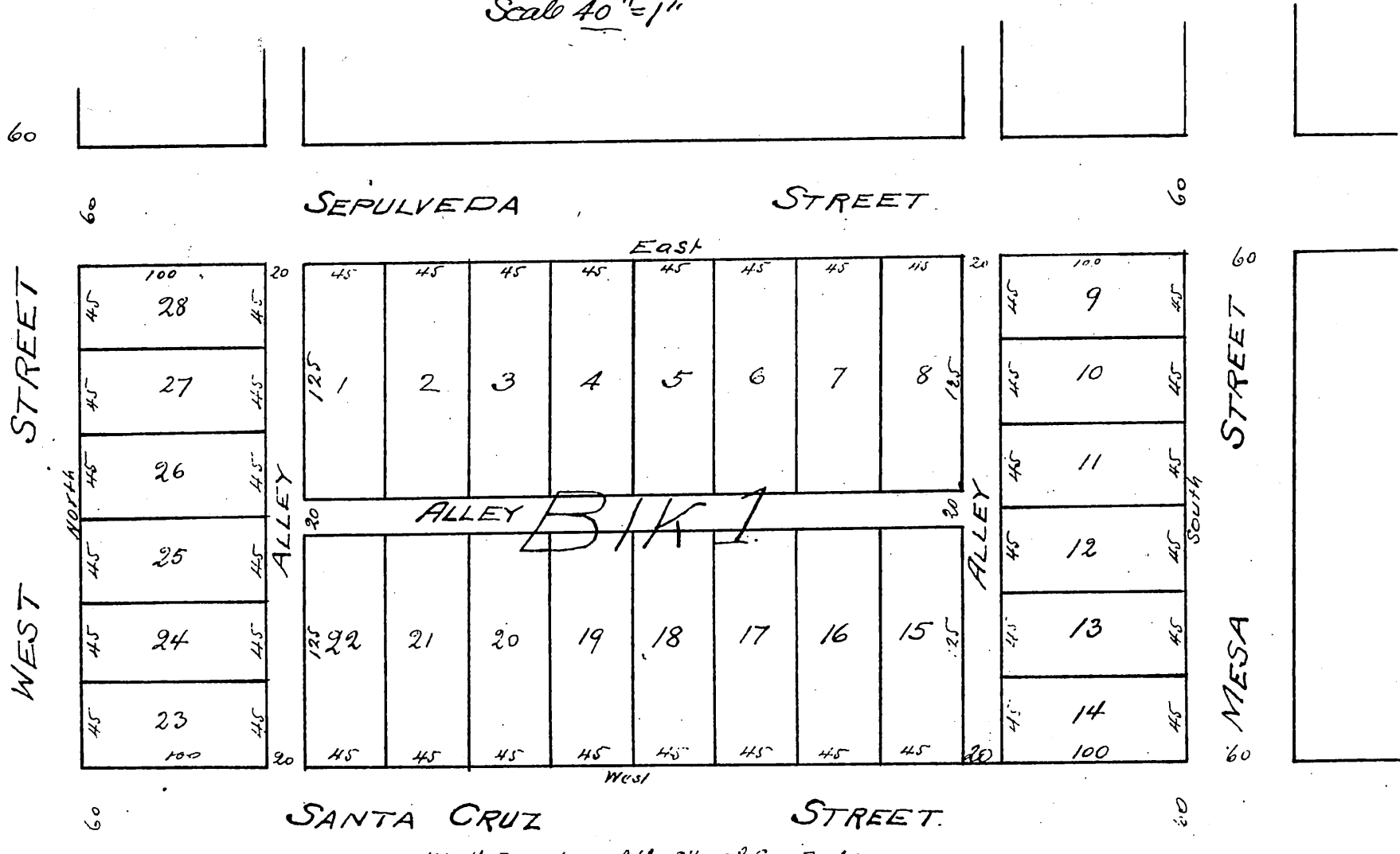


Map
 Showing Block I of
 Palos Verdes Tract
 being a subdivision of a portion of Lot 1 in Lot M of the
 Rancho Los Palos Verdes

Los Angeles Co Cal.
 July 1897 J.A. Bernal Sur & C.E.
 Scale 40" = 1"



NW Cor of Bk I of the City of San Pedro
 Recorded in Book 3 of the Licensed
 Surveyors Records.

I hereby certify that I am the proprietor of the property subdivided as shown by this map and further that I caused such subdivision and map to be made and dedicated for public use the streets and alleys as shown on this map.

A full true and correct copy of the original
 (scale reduced to 80 feet to 1 inch) recorded July 7, 1898
 at 47 min past 12 M. at request of A. W. Sepulveda.

E. C. Hodgman Co Rec.
 by E. T. Wright & Co Sur.