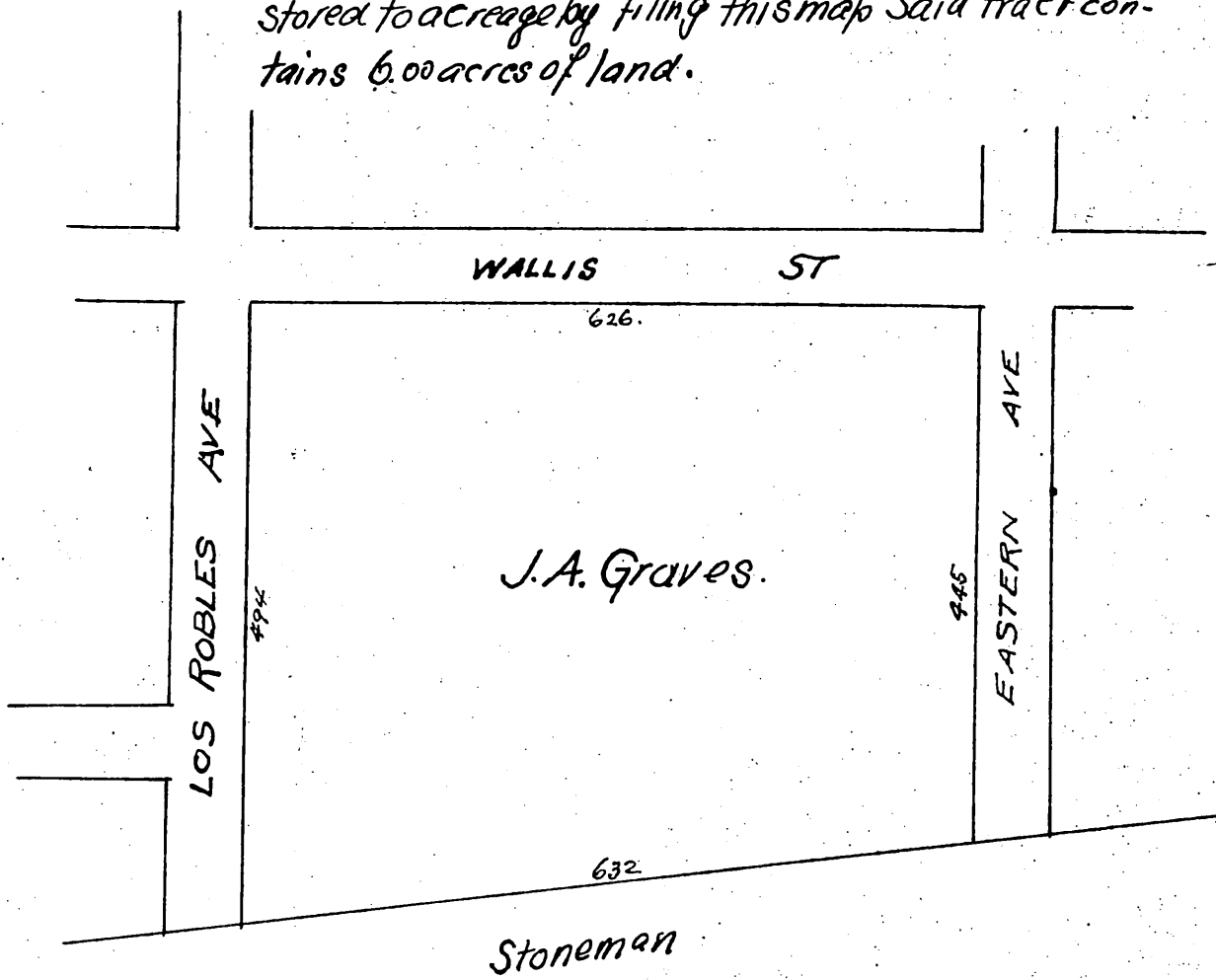


J.A. Graves' map
 of C.W. McKelvey's Sub of
 Portion of Lot 12, Block P, San Pasqual Tract

according to map in Book 42, Page 63 Miscellaneous
 Records, part of which was restored to acreage by
 resolution of the Board of Trustees of Pasadena
 dated Feb 28 1891 and the balance of which was re-
 stored to acreage by filing this map. Said tract con-
 tains 6.00 acres of land.



Owner: J.A. Graves

A full true and correct copy of the original
 Recorded Oct 6, 1898 at 11 min past 9 A.M.
 at request of J.A. Graves
 E.C. Hodgson Co. Rec.

By E.T. Wright Co. Sur.