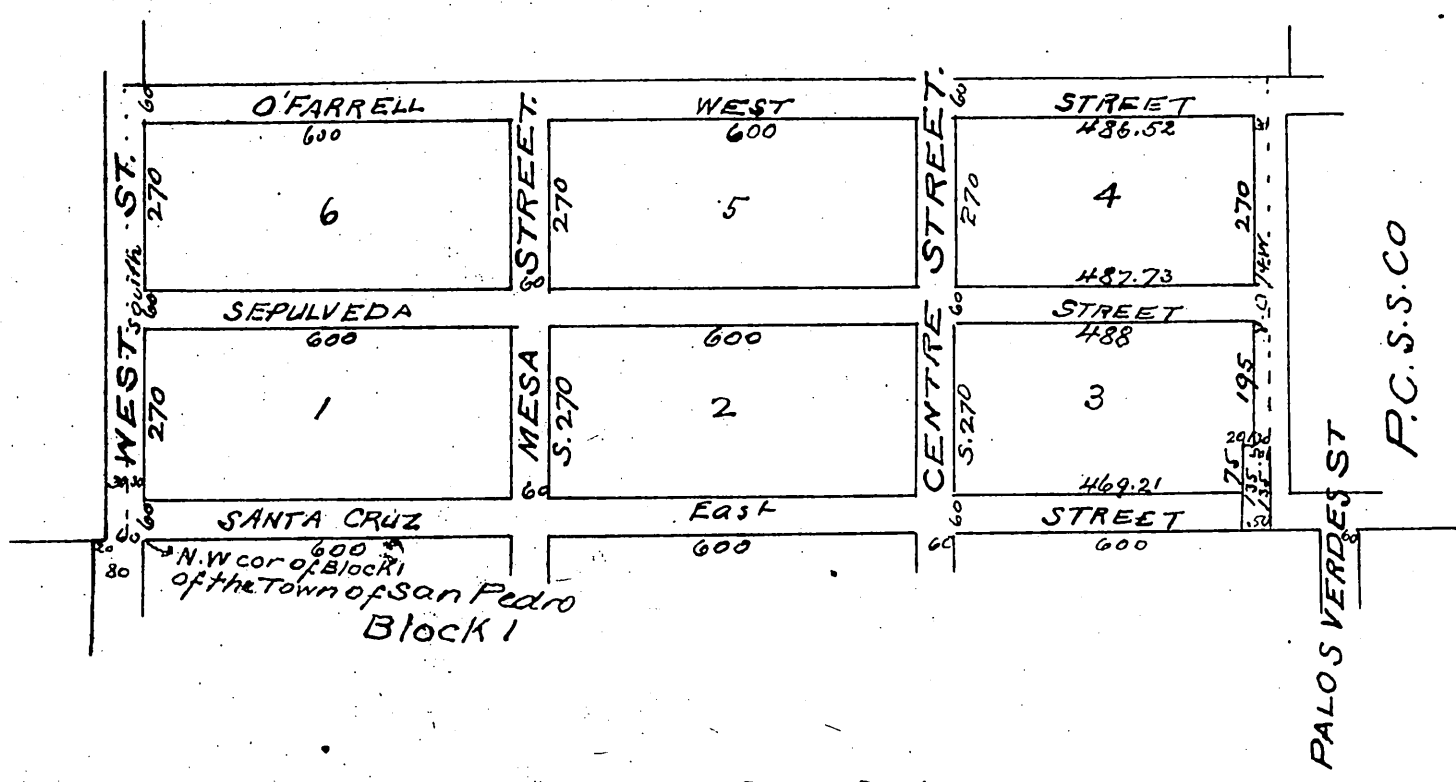
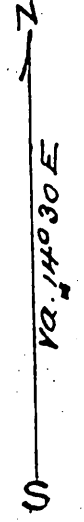


# Map of Palos Verdes Tract.

Being a subdivision of Lot 1 in lot M of  
the Rancho Palos Verdes County of Los  
Angeles State of California.

W.A. Foster Surveyor Sept 1896.  
Scale 100ft = 1in



## Town of San Pedro

I hereby certify I am the proprietor of the property subdivided as shown by this map and further that I caused such subdivision and map to be made and dedicate for public use the Streets and Alleys as shown on this map  
Dated Oct 7 1898

Aurelio W. Sepulveda

A full true and correct copy the original.  
(Scale reduced to 300 feet to 1 inch)  
Recorded Oct 7 1898 at 28 Min past 12 M  
at request of A.W. Sepulveda  
E.C. Hodgman Co. Rec.

by E. T. Wright  
County Surveyor and ex officio Deputy Co. Rec.