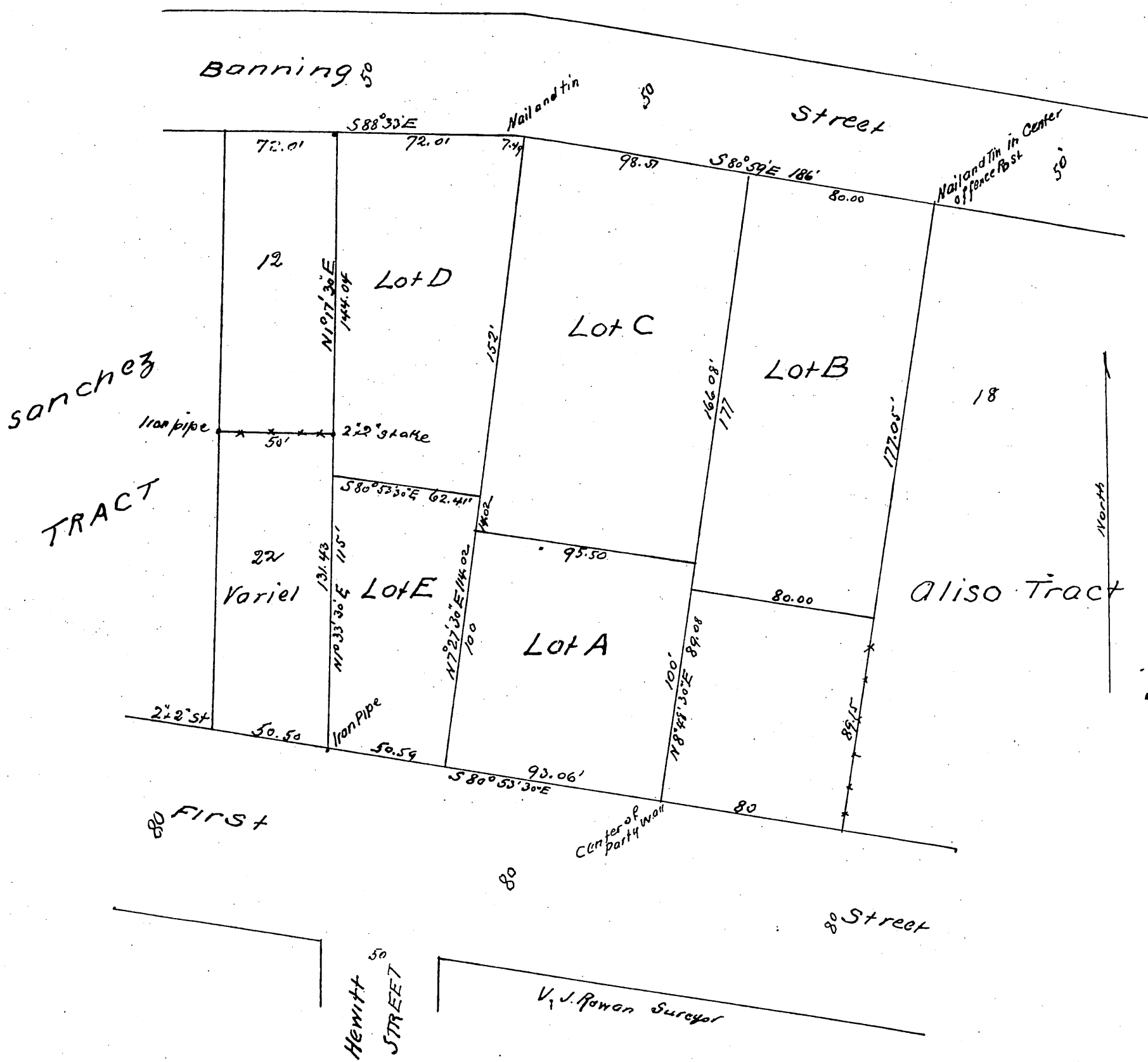


Map
of the
Forthmann and Bergin Tract
Located in the City of Los Angeles
County of Los Angeles State of California
Scale 30 feet to one inch



Owners
By Los Angeles Soap Co
By J. A. Forthmann President
By John J. Bergin Secy

A full true and correct copy of the original (Scale reduced to 30 ft to one inch) recorded Nov. 29 1898 at 25 min past 3 p.m. at request of Los Angeles Soap Co
E. C. Hodgman Co Rec
by E. T. Wright Co Ent.